

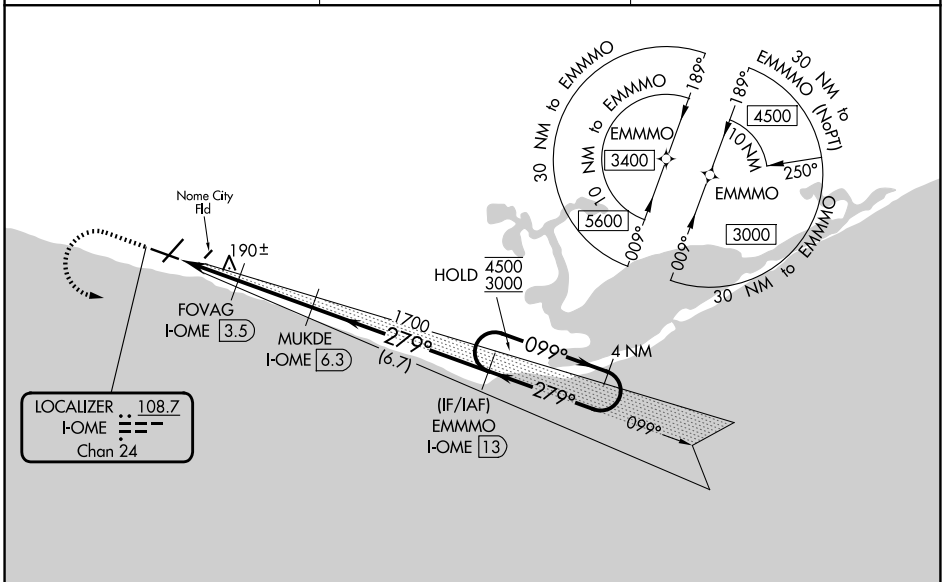
LOC/DME I-OME 108.7 Chan 24	APP CRS 279°	Rwy Ldg 6009 TDZE 25 Apt Elev 41
---	------------------------	---

ILS Y or LOC Y RWY 28

NOME (OME)(PAOM)

<p>RNAV 1-GPS required. DME required.</p> <p>▼ Circling Rwy 21 NA at night. Rwy 28 helicopter visibility reduction below RVR 4000 NA. For inop ALS, increase S-LOC 28 Cats A/B visibility to RVR 5500 and Cats C/D visibility to RVR 6000. Inop table does not apply to S-ILS Rwy 28. Circling NA for Cats C and D north of Rwy 10-28.</p>	<p>MALSR</p>	<p>MISSED APPROACH: Climb to 1300 then climbing left turn to 3000 direct EMMMO and hold.</p>
---	--------------	--

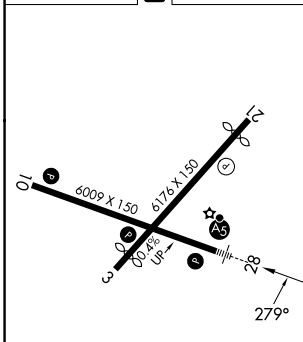
AFIS 119.925	ANCHORAGE CENTER 133.3 290.4	NOME RADIO 123.6 (CTAF) ①
------------------------	--	-------------------------------------



AK, 14 MAY 2026 to 09 JUL 2026

AK, 14 MAY 2026 to 09 JUL 2026

ELEV 41	D	TDZE 25
---------	----------	---------



1300	3000	EMMMO I-OME 13	Use I-OME DME when on localizer course.	EMMMO I-OME 13	4 NM Holding Pattern
* LOC only.	I-OME 1.2	* I-OME 2.4	FOVAG I-OME 3.5	1700	099° → 4500 ← 279° 3000
	-1.2 NM	-1.1 NM	-2.8 NM	-6.7 NM	GS 3.00° TCH 51

CATEGORY	A	B	C	D
S-ILS 28		275/40	250 (300-¾)	
S-LOC 28		440/40	415 (400-¾)	
CIRCLING	540-1	499 (500-1)	540-1½ 499 (500-1½)	700-2 659 (700-2)

- REIL Rwys 3 and 10 ①
- HIRL Rwy 10-28 ①
- MIRL Rwy 3-21 ①