

LOC/DME I-OME	APP CRS	Rwy Ldg	6009
108.7	279°	TDZE	25
Chan 24		Apt Elev	41

ILS Z or LOC Z RWY 28

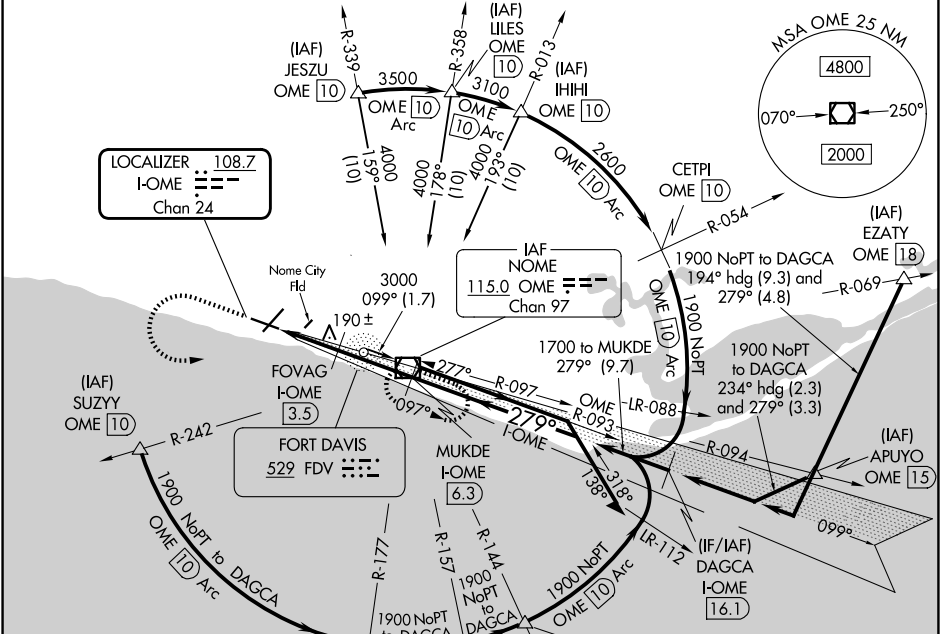
NOME(OME)(PAOM)

DME required.

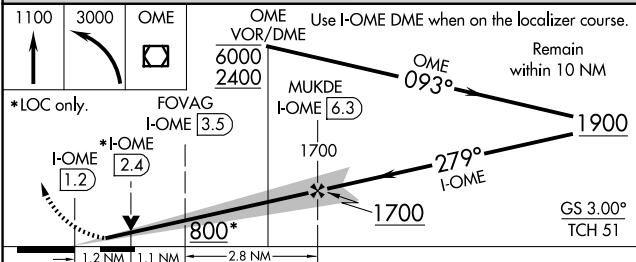
MAJRS MISSED APPROACH: Climb to 1100 then climbing left turn to 3000 direct OME VOR/DME and hold, continue climb-in-hold to 3000.

Warnings:
 Circling Rwy 21 NA at night. Circling NA for Cats C and D north of Rwy 10-28. Inop table does not apply to S-ILS 28 all Cats and S-LOC 28 Cats A and B. For inop ALS, increase S-LOC 28 Cats C and D to RVR 6000.

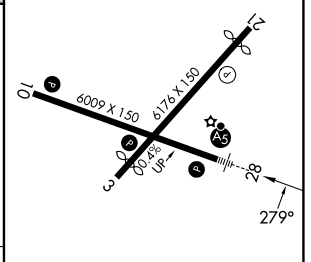
AFIS 119.925	ANCHORAGE CENTER 133.3 290.4	NOME RADIO 123.6 (CTAF) 0
------------------------	--	-------------------------------------



ELEV 41	D TDZE 25
---------	------------------



CATEGORY	A	B	C	D
S-ILS 28		275/50	250 (300-1)	
S-LOC 28		440/50	415 (400-1)	
CIRCLING	540-1	499 (500-1)	540-1½ 499 (500-1½)	700-2 659 (700-2)



REIL Rwys 3 and 10 0
HIRL Rwy 10-28 0
MIRL Rwy 3-21 0

AK, 14 MAY 2026 to 09 JUL 2026

AK, 14 MAY 2026 to 09 JUL 2026