

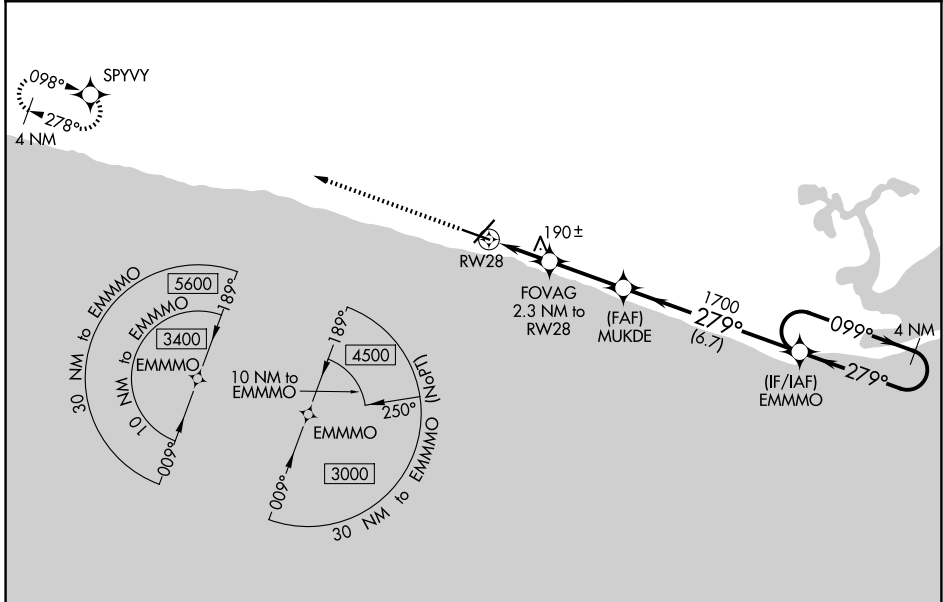
WAAS CH 45927 W28A	APP CRS 279°	Rwy Ldg TDZE 25 Apt Elev 41
--	------------------------	---

RNAV (GPS) RWY 28

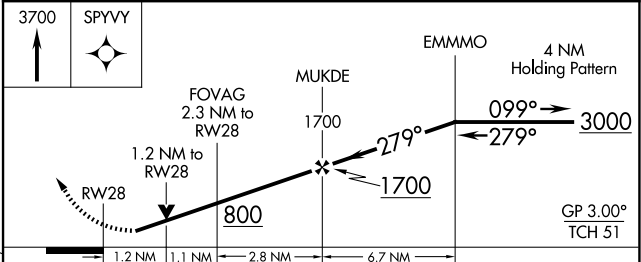
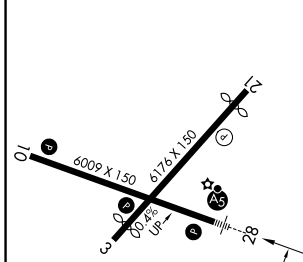
NOME (OME)(PAOM)

RNP APCH - GPS.	MALS R	MISSED APPROACH: Climb to 3700 direct SPYVY and hold, continue climb-in-hold to 3700.
<p>⚠ Inop table does not apply to LPV 28 all Cats. For uncompensated Baro-VNAV systems, LNAV/VNAV NA below -18°C or above 54°C. Circling NA for Cats C and D north of Rwy 10-28. NA. Rwy 28 helicopter visibility reduction below 4000 NA. Circling Rwy 21 NA at night.</p>		

AFIS 119.925	ANCHORAGE CENTER 133.3 290.4	NOME RADIO 123.6 (CTAF) 1
------------------------	--	-------------------------------------



ELEV 41	D	TDZE 25
---------	----------	---------



CATEGORY	A	B	C	D
LPV DA		275/40	250 (300-¾)	
LNAV/VNAV DA		301/40	276 (300-¾)	
LNAV MDA		440/40	415 (400-¾)	
CIRCLING	540-1	499 (500-1)	540-1½ 499 (500-1½)	700-2 659 (700-2)

REIL Rwy 3 and 10 **1**
HIRL Rwy 10-28 **1**
MIRL Rwy 3-21 **1**

AK, 14 MAY 2026 to 09 JUL 2026

AK, 14 MAY 2026 to 09 JUL 2026