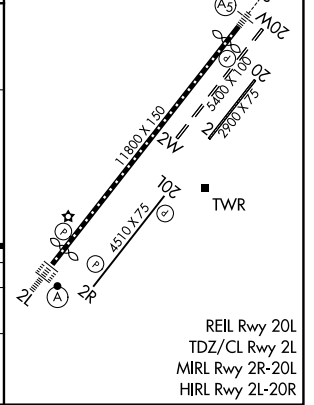
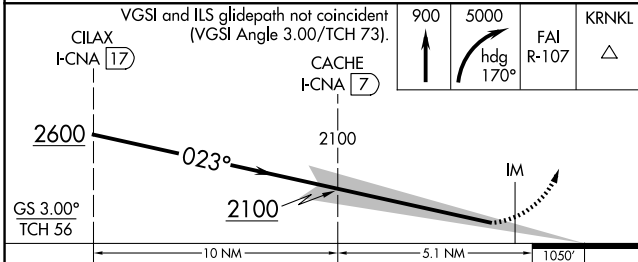
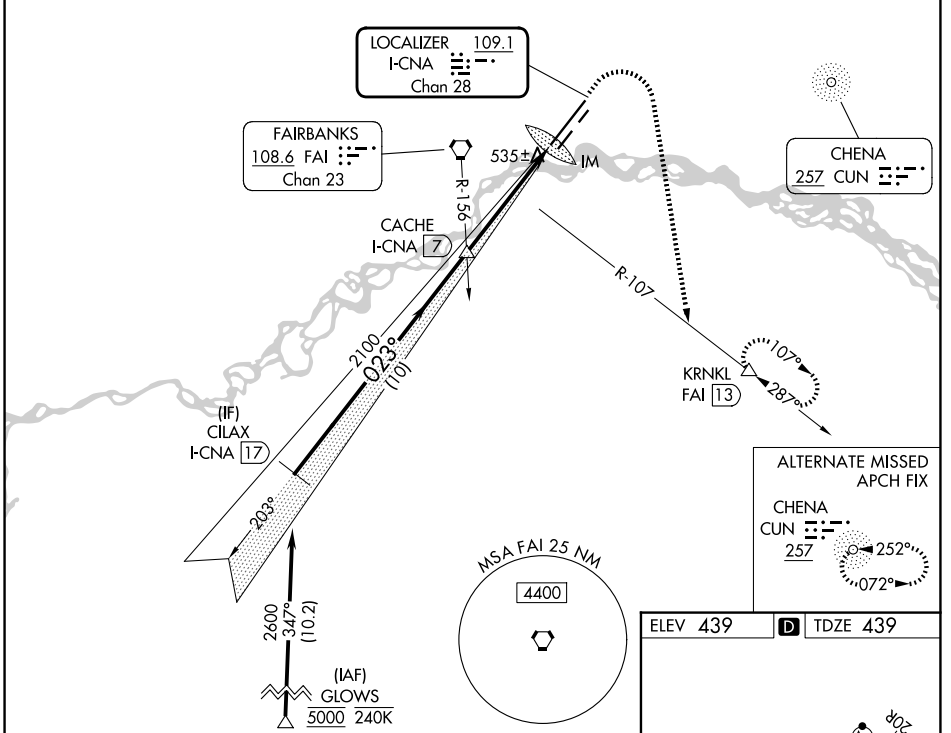


LOC/DME I-CNA <b>109.1</b> Chan 28	APP CRS <b>023°</b>	Rwy Ldg <b>11050</b> TDZE <b>439</b> Apt Elev <b>439</b>
--	------------------------	--

# ILS RWY 2L (SA CAT I)

FAIRBANKS INTL (FAI) (PAFA)

RNP APCH - GPS. DME required.		ALSIF-2 	MISSED APPROACH: Climb to 900 then climbing right turn to 5000 on heading 170° and FAI VORTAC R-107 to KRNL/FAI 13 DME and hold, continue climb-in-hold to 5000.		
Requires specific OPSPEC, MSPEC, or LOA approval. -29°C					
ATIS <b>124.4</b>	FAIRBANKS APP CON <b>125.35 363.2</b>	FAIRBANKS TOWER <b>118.3 257.8</b>	GND CON <b>121.9</b>	CLNC DEL <b>127.6</b>	



CATEGORY	A	B	C	D
S-ILS 2L	RA 139/14 150 DA 589			

**SA CATEGORY I ILS - SPECIAL AIRCREW & AIRCRAFT CERTIFICATION REQUIRED**

AK, 14 MAY 2026 to 09 JUL 2026

AK, 14 MAY 2026 to 09 JUL 2026

ALTERNATE MISSED APCH FIX  
CHENA CUN 257  
252°  
072°