

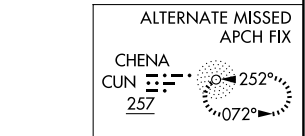
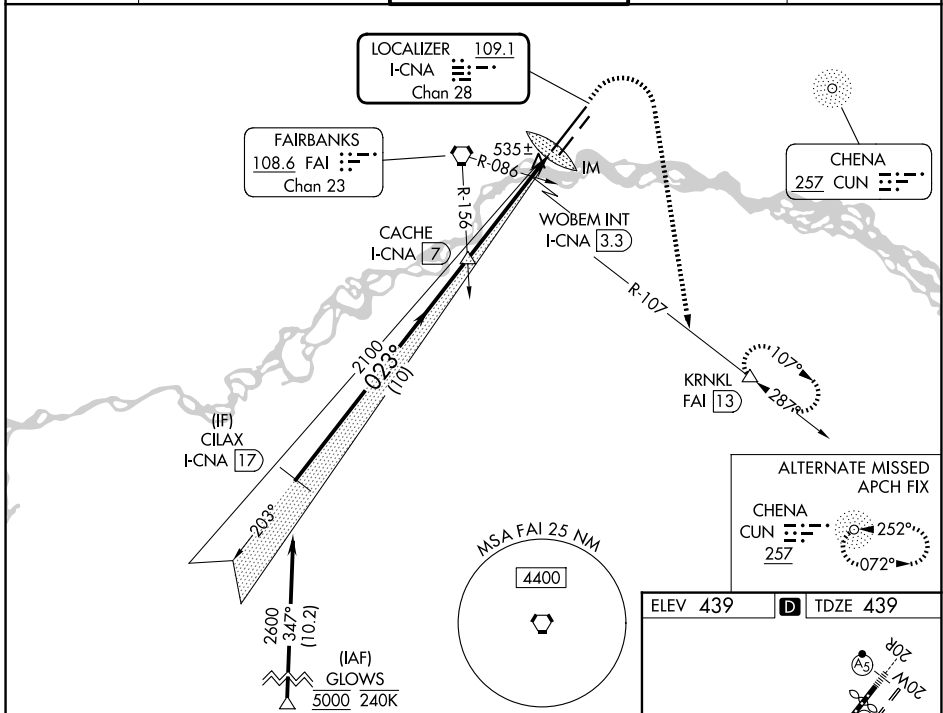
LOC/DME I-CNA 109.1 Chan 28	APP CRS 023°	Rwy Ldg 11050 TDZE 439 Apt Elev 439
--	------------------------	--

ILS or LOC RWY 2L

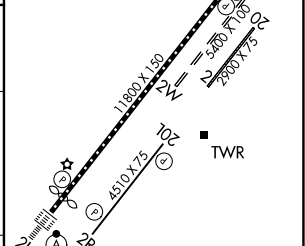
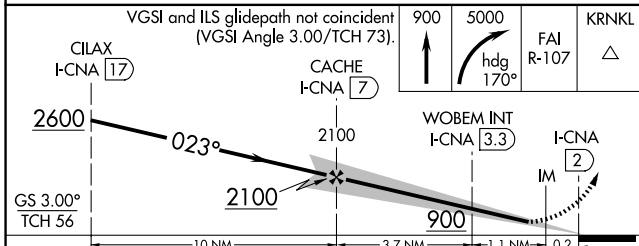
FAIRBANKS INTL (FAI) (PAFA)

RNP APCH - GPS. DME required.	ALSIF-2 	MISSED APPROACH: Climb to 900 then climbing right turn to 5000 on heading 170° and FAI VORTAC R-107 to KRNL/FAI 13 DME and hold, continue climb-in-hold to 5000.
Circling NA west of Rwy 2L-20R. Circling NA to Rwsy 2W and 20W. For inop ALS, increase S-ILS 2L Cat E visibility to RVR 4000 and S-LOC 2L Cat C/D/E visibility to RVR 5500.		

ATIS 124.4	FAIRBANKS APP CON 125.35 363.2	FAIRBANKS TOWER 118.3 257.8	GND CON 121.9	CINC DEL 127.6
----------------------	--	---------------------------------------	-------------------------	--------------------------



ELEV 439	D TDZE 439
----------	-------------------



CATEGORY	A	B	C	D	E
S-ILS 2L	639/18 200 (200-½)				
S-LOC 2L	800/24	361 (400-½)	800/35 361 (400-¾)		
CIRCLING	880-1 441 (500-1)	900-1 461 (500-1)	900-1½ 461 (500-1½)	1020-2 581 (600-2)	1060-2¼ 621 (700-2¼)



AK, 14 MAY 2026 to 09 JUL 2026

AK, 14 MAY 2026 to 09 JUL 2026