

(MKNLY4.TKA) 23278

# MCKINLEY FOUR DEPARTURE

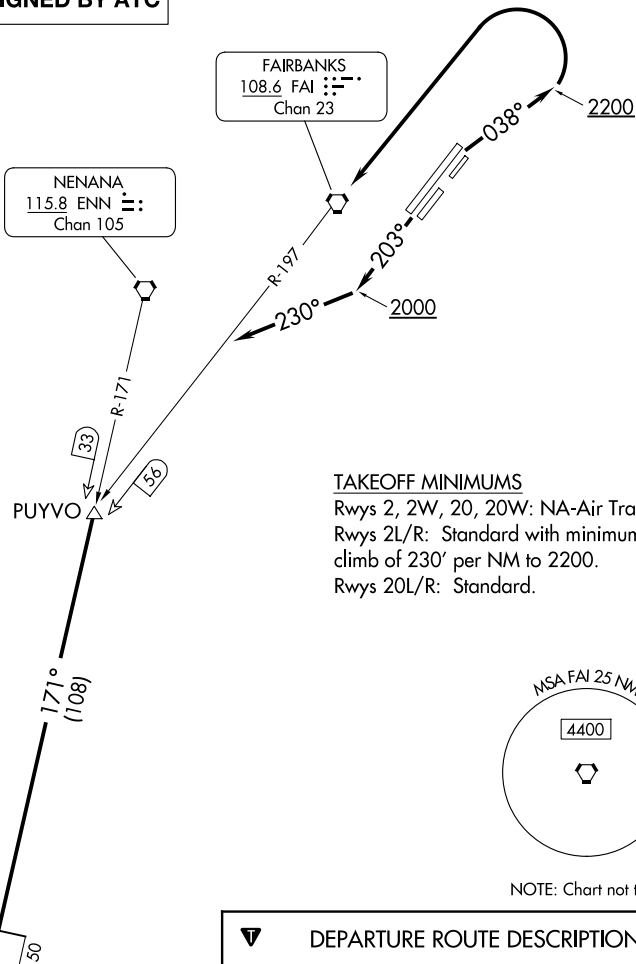
AL-1234 (FAA)

FAIRBANKS INTL (FAI) (PAFA)  
FAIRBANKS, ALASKA

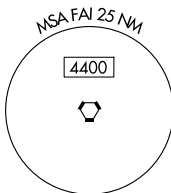
FAIRBANKS DEP CON  
125.35 363.2  
ATIS  
124.4  
CLNC DEL  
127.6  
GND CON  
121.9  
FAIRBANKS TOWER  
118.3 257.8

**TOP ALTITUDE:  
ASSIGNED BY ATC**

RADAR required. DME required.



**TAKEOFF MINIMUMS**  
Rwys 2, 2W, 20, 20W: NA-Air Traffic.  
Rwys 2L/R: Standard with minimum  
climb of 230' per NM to 2200.  
Rwys 20L/R: Standard.



NOTE: Chart not to scale.

## DEPARTURE ROUTE DESCRIPTION

**TAKEOFF RUNWAYS 2L/R:** Climb on heading 038° to 2200, then left turn direct FAI VORTAC, thence . . . .

**TAKEOFF RUNWAYS 20L/R:** Climb on heading 203° to 2000, then right turn heading 230°, thence . . . .

. . . . intercept FAI R-197 to PUYVO/FAI 56 DME fix then on ENN R-171 and TKA R-352 to TKA VOR/DME, maintain ATC assigned altitude, then on assigned route and altitude.

AK, 14 MAY 2026 to 09 JUL 2026

AK, 14 MAY 2026 to 09 JUL 2026

# MCKINLEY FOUR DEPARTURE

(MKNLY4.TKA) 10AUG23

FAIRBANKS, ALASKA  
FAIRBANKS INTL (FAI) (PAFA)