

APP CRS	Rwy Ldg	11050
023°	TDZE	439
	Apt Elev	439

RNAV (RNP) Z RWY 2L

FAIRBANKS INTL (FAI) (PAFA)

RNP AR APCH - GPS.

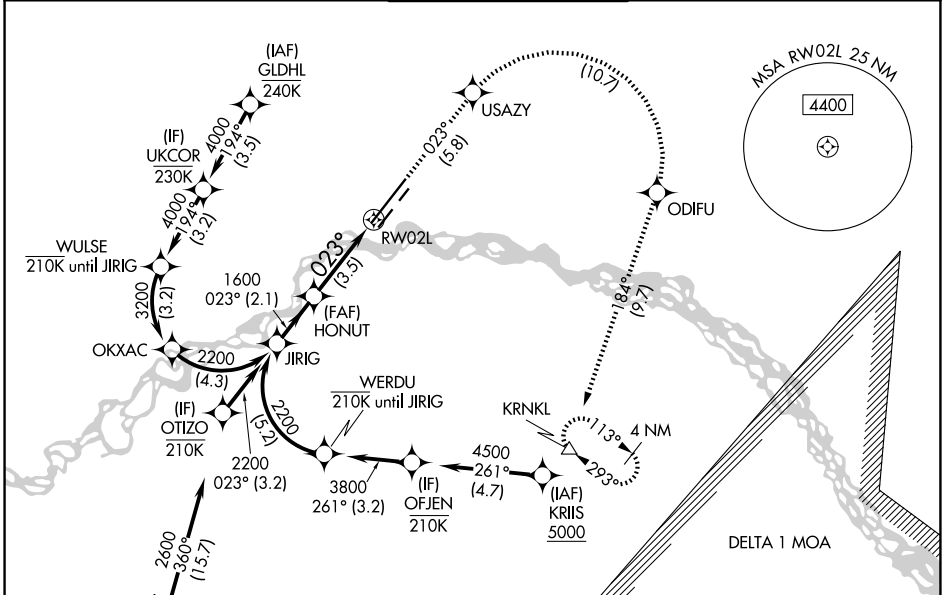
⚠ For uncompensated Baro-VNAV systems, procedure NA below -19°C or above 54°C. For inop ALS, increase RNP 0.10* all Cats visibility to RVR 4500, increase RNP 0.10 all Cats visibility to RVR 5500, and increase RNP 0.30 all Cats visibility to RVR 6000.

ALSF-2

MISSED APPROACH: Climb to 5000 on track 023° USAZY then right turn to ODIFU and track 184° to KRNLK and hold.

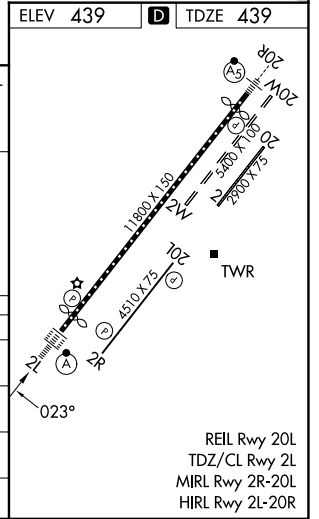
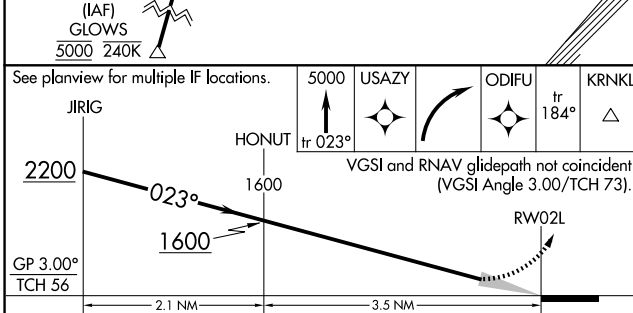
*Missed approach requires minimum climb of 222 feet per NM to 2420.

ATIS	FAIRBANKS APP CON	FAIRBANKS TOWER	GND CON	CLNC DEL
124.4	125.35 363.2	118.3 257.8	121.9	127.6



AK, 14 MAY 2026 to 09 JUL 2026

AK, 14 MAY 2026 to 09 JUL 2026



CATEGORY	A	B	C	D
RNP 0.10 DA*		755/24	316 (400-½)	
RNP 0.10 DA		805/35	366 (400-¾)	
RNP 0.30 DA		855/40	416 (500-¾)	

AUTHORIZATION REQUIRED