

LOC/DME I-ENA 108.9 Chan 26	APP CRS 196°	Rwy Ldg 7575 TDZE 98 Apt Elev 100
--	------------------------	--

ILS Y or LOC Y RWY 20R

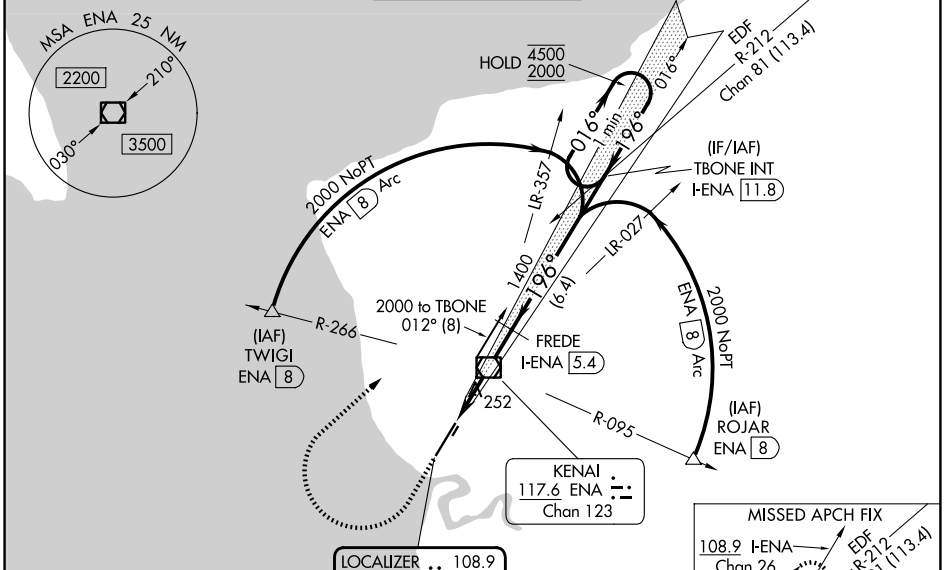
KENAI MUNI (ENA) (PAEN)

TACAN required.

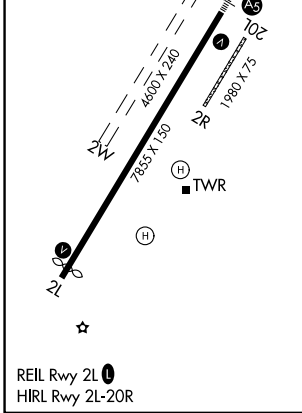
⚠ Circling NA to Rwys 2W and 20W. Circling Rwy 2R, 20L NA at night. For inop ALS, increase S-ILS 20R Cat E visibility to RVR 4000. For inop ALS, increase S-LOC 20R Cat E visibility to 1 1/4 SM.
RVR 1800 authorized with use of FD or AP or HUD to DA.

MALS
MISSED APPROACH: Climb to 1800 then climbing right turn to 4000 on heading 046° and on EDF TACAN R-212 to TBONE INT/EDF 49.2 DME and hold.
† Missed approach requires minimum climb of 800 feet per NM to 4000; if unable to meet climb gradient, see ILS Z or LOC Z RWY 20R.

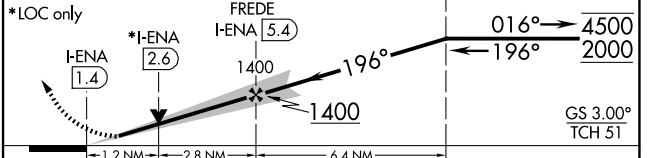
ATIS 133.35	ANCHORAGE CENTER 125.7 379.1	KENAI TOWER* 121.3 (CTAF) 239.3	GND CON 118.75	KENAI RADIO 122.65
-----------------------	--	---	--------------------------	------------------------------



ELEV 100	D	TDZE 98
----------	----------	---------



1800	4000	EDF R-212	Use I-ENA DME when on the localizer course.
↑	hdg 046°	TBONE INT	TBONE INT I-ENA 11.8
			One Minute Holding Pattern



CATEGORY	A	B	C	D	E
S-ILS 20R #†	298/24 200 (200-1/2)				
S-LOC 20R †	520/24	422 (500-1/2)	520/40	422 (500-3/4)	
CIRCLING	560-1 460 (500-1)	580-1 480 (500-1)	580-1 1/2 480 (500-1 1/2)	680-2 580 (600-2)	760-2 1/4 660 (700-2 1/4)

AK, 14 MAY 2026 to 09 JUL 2026

AK, 14 MAY 2026 to 09 JUL 2026