

WAAS CH 69404 W02A	APP CRS 016°	Rwy Ldg TDZE Apt Elev	7575 94 100
----------------------------------------	------------------------	-----------------------------	----------------------------------------

RNAV (GPS) RWY 2L

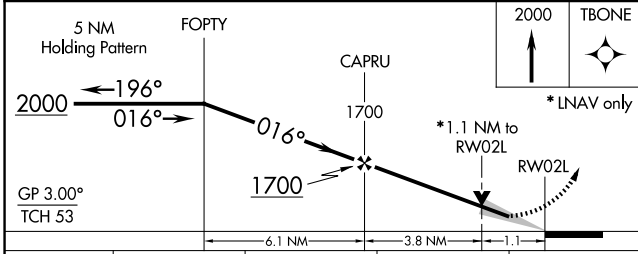
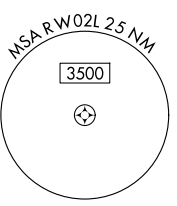
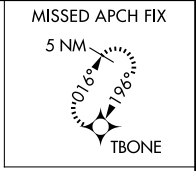
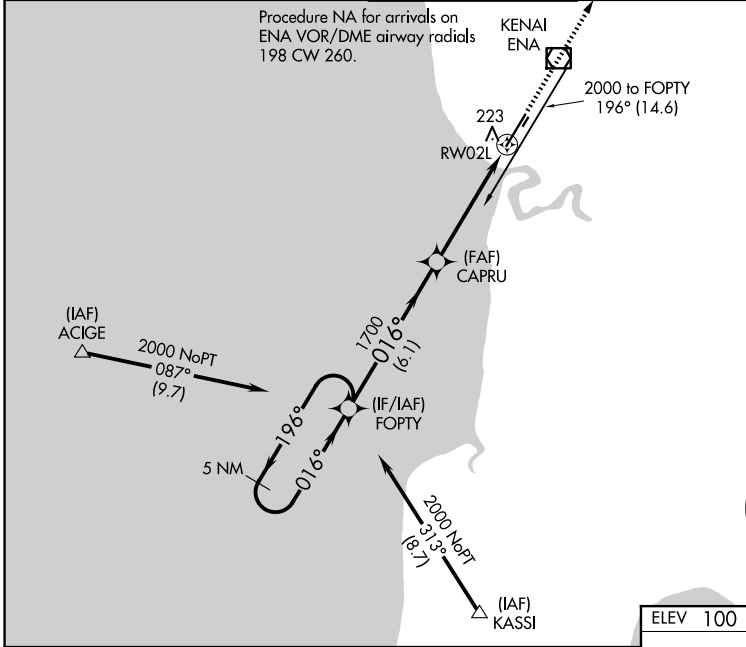
KENAI MUNI (ENA) (PAEN)

RNP APCH.

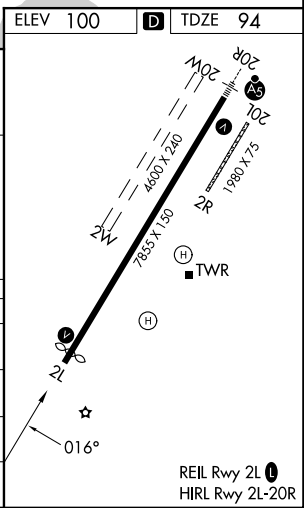
⚠ Baro-VNAV NA when using Soldotna altimeter setting. For uncompensated Baro-VNAV systems, LNAV/VNAV NA below -18°C (0°F) or above 54°C (130°F). When local altimeter setting not received, use Soldotna altimeter setting: increase LPV DA to 366 feet and LNAV/VNAV DA to 429 feet and all MDA 40 feet; increase LPV and LNAV/VNAV visibility all Cats and LNAV Cat C/D visibility 1/8 mile; increase Circling Cat D visibility 1/4 mile. VDP NA when using Soldotna altimeter setting. Circling Rwy 2R, 20L NA at night. Circling Rwy 2W, 20W NA.

MISSED APPROACH:
Climb to 2000 direct TBONE and hold.

ATIS 133.35	ANCHORAGE CENTER 125.7 379.1	KENAI TOWER* 121.3 (CTAF) 239.3	GND CON 118.75	KENAI RADIO 122.65
-----------------------	----------------------------------------	-------------------------------------------	--------------------------	------------------------------



CATEGORY	A	B	C	D
LPV DA	344-3/4		250 (300-3/4)	
LNAV/VNAV DA	407-1		313 (400-1)	
LNAV MDA	480-1 386 (400-1)		480-1 1/8 386 (400-1 1/8)	
CIRCLING	560-1 460 (500-1)	580-1 480 (500-1)	580-1 1/2 480 (500-1 1/2)	740-2 640 (700-2)



AK, 14 MAY 2026 to 09 JUL 2026

AK, 14 MAY 2026 to 09 JUL 2026