

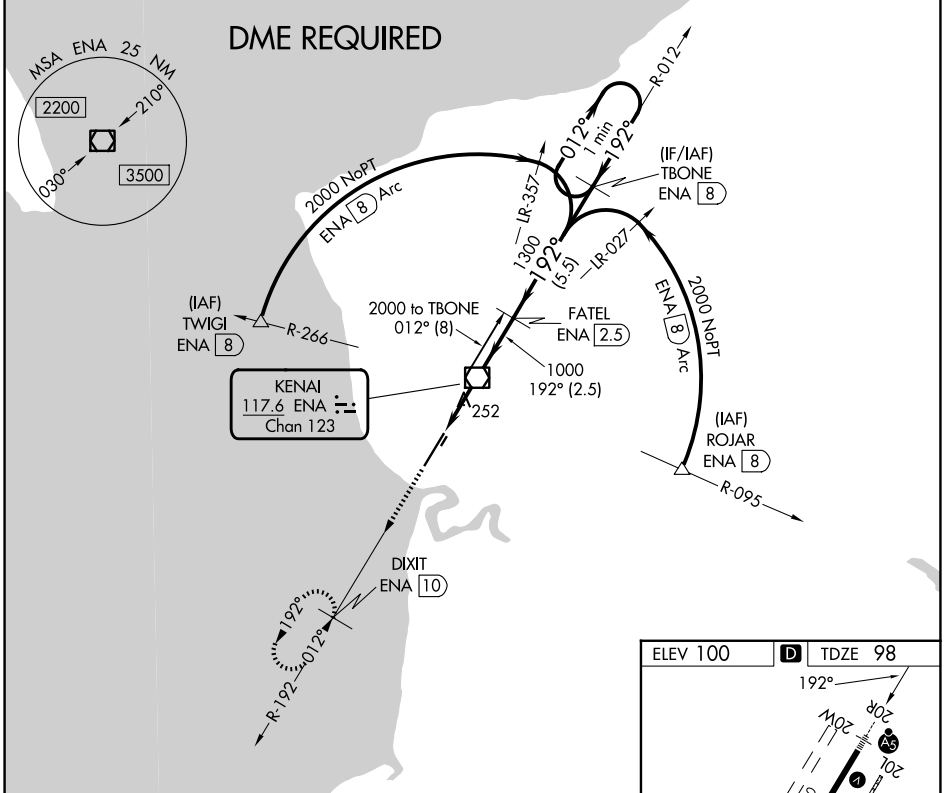
VOR/DME ENA 117.6 Chan 123	APP CRS 192°	Rwy Ldg 7575 TDZE 98 Apt Elev 100
--	------------------------	--

VOR RWY 20R

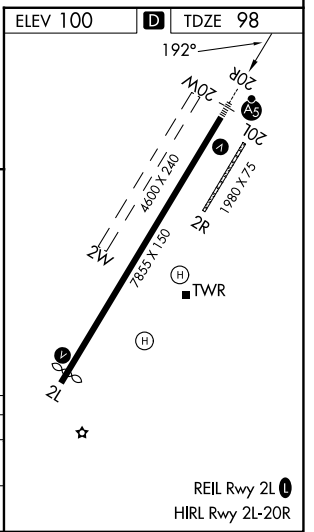
KENAI MUNI (ENA) (PAEN)

<p>Circling Rwy 2R, 20L NA at night. DME required. VDP NA when using Soldotna altimeter setting. When local altimeter setting not received, use Soldotna altimeter setting and increase all MDA 40 feet, increase S-20R Cats C and D visibility to RVR 5000. Circling Rwy 2W, 20W NA.</p>	<p>MALS R</p>	<p>MISSED APPROACH: Climb to 2200 on ENA VOR/DME R-192 to DIXIT/ENA VOR/DME 10 DME and hold.</p>		
			<p>ATIS 133.35</p>	<p>ANCHORAGE CENTER 125.7 379.1</p>

ATIS 133.35	ANCHORAGE CENTER 125.7 379.1	KENAI TOWER* 121.3 (CTAF) 239.3	GND CON 118.75	KENAI RADIO 122.65
-----------------------	--	---	--------------------------	------------------------------



2200 ENA R-192	DIXIT ENA 10	VGSI and descent angles not coincident (VGSI Angle 3.00/TCH 51).		TBONE ENA 8	One Minute Holding Pattern
ENA 2.3	ENA 1.2	ENA VOR/DME	FATEL ENA 2.5	192° → 2000 ← 192°	
3.44° TCH 51		1000	1300	012° →	
1.2		1.2	2.5 NM	5.5 NM	
CATEGORY	A	B	C	D	
S-20R	520/24	422 (500-½)	520/40	422 (500-¾)	
CIRCLING	560-1 460 (500-1)	580-1 480 (500-1)	580-1½ 480 (500-½)	680-2 580 (600-2)	



AK, 14 MAY 2026 to 09 JUL 2026

AK, 14 MAY 2026 to 09 JUL 2026