

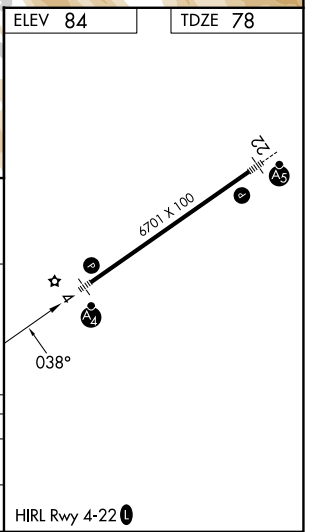
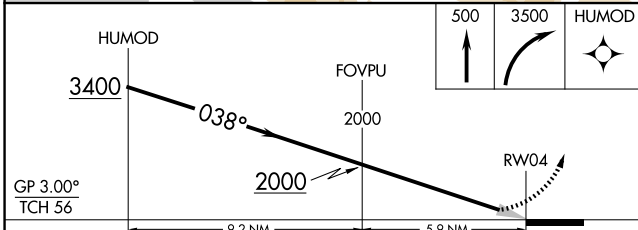
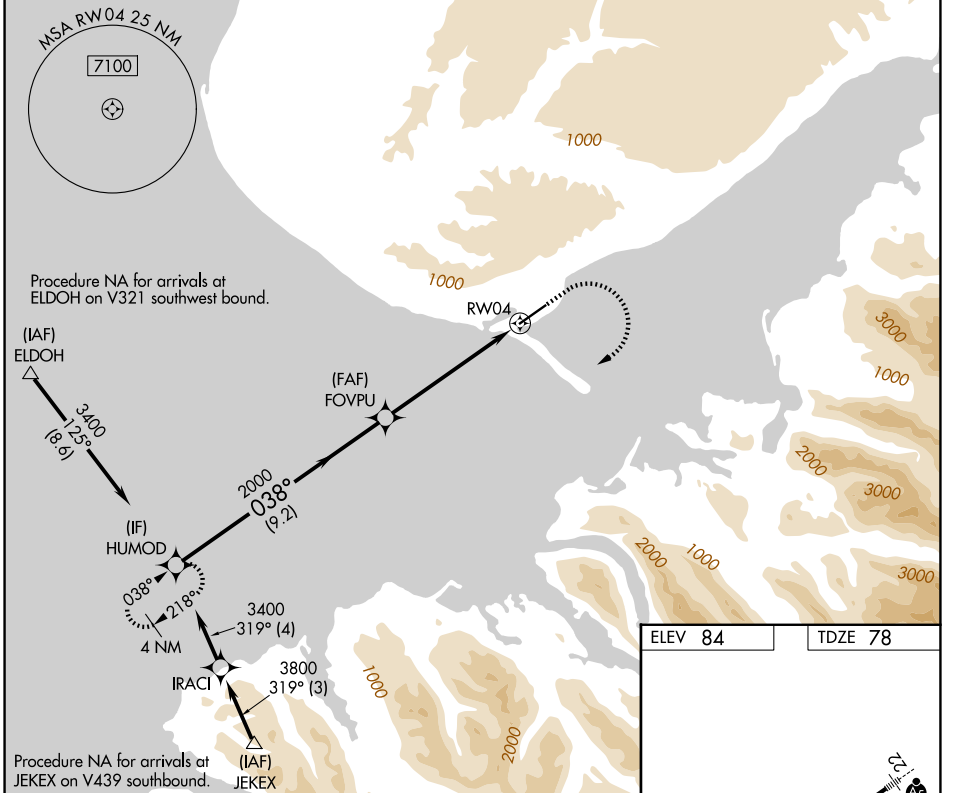
WAAS CH 86302 W04A	APP CRS 038°	Rwy Ldg TDZE 78 Apt Elev 84	6701
--	------------------------	---	-------------

RNAV (GPS) Z RWY 4

HOMER (HOM) (PAHO)

RNP APCH - GPS.	MALSF	MISSED APPROACH: Climb to 500 then climbing right turn to 3500 direct HUMOD and hold.
<p>▼ For uncompensated Baro-VNAV systems, LNAV/VNAV NA below -21°C or above 54°C. Inop table does not apply to LPV all Cats.</p>		

AFIS 135.65	ANCHORAGE CENTER 125.9 270.3	HOMER RADIO 123.6 (CTAF)
-----------------------	--	------------------------------------



CATEGORY	A	B	C	D
LPV DA		444-1	366 (400-1)	
LNAV/VNAV DA		558-1 $\frac{3}{8}$	480 (500-1 $\frac{3}{8}$)	

HIRL Rwy 4-22

AK, 14 MAY 2026 to 09 JUL 2026

AK, 14 MAY 2026 to 09 JUL 2026