

KING SALMON, ALASKA

HI-VOR Z or TACAN Z RWY 12

VORTAC AKN 112.8 Chan 75	APCH CRS 116°	Rwy ldg 8501 TDZE 62 Arpt Elev 73
--	-------------------------	--

[USAF]

KING SALMON (AKN) (PAKN)

DME required. RADAR required for procedure entry.

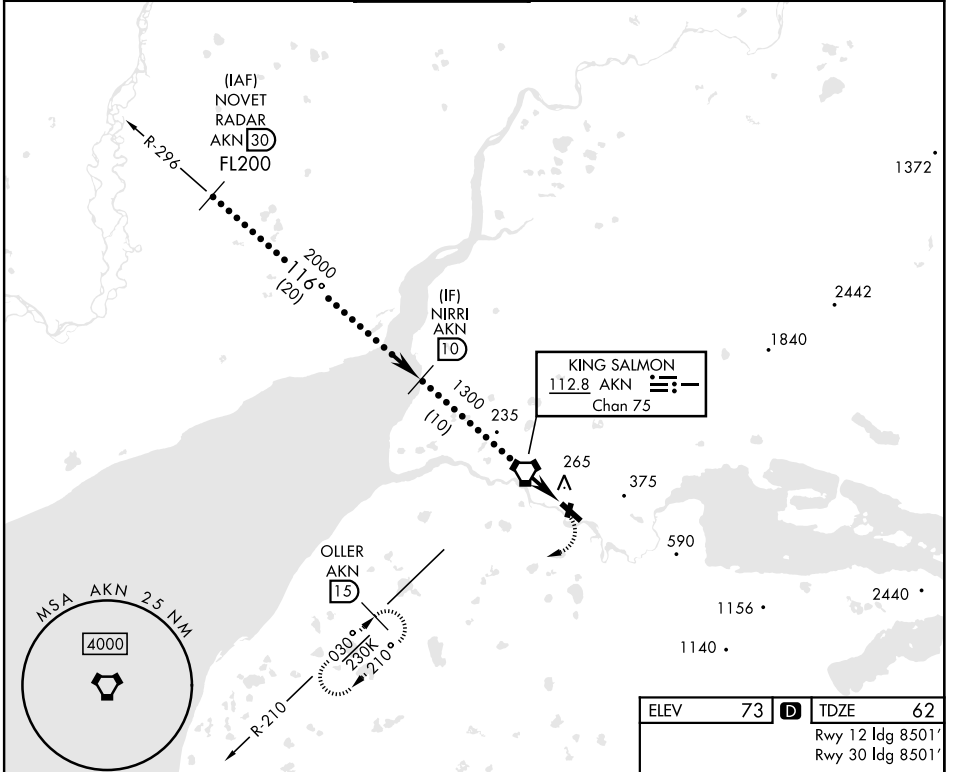
▽ * When ALS inop, increase vis to 1½ miles.
When control tower closed, increase RVR to 50.

33 -31° C



MISSED APPROACH: Climbing right turn to 3000 on heading 238° and AKN VORTAC R-210 to OLLER/15 DME and hold.

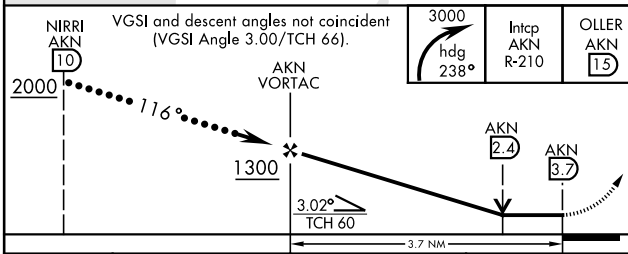
ATIS 128.8	ANCHORAGE CENTER 124.8 354.0	TOWER ★ 118.3 279.5	GND CON 121.9	CTAF 121.90 352.05	UNICOM 122.95
----------------------	--	-------------------------------	-------------------------	------------------------------	-------------------------



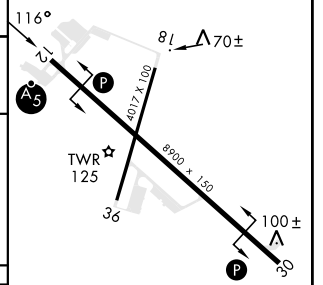
AK, 14 MAY 2026 to 09 JUL 2026

AK, 14 MAY 2026 to 09 JUL 2026

EMERG SAFE ALT 100 NM 9900



ELEV	73	TDZE	62
		Rwy 12 ldg	8501'
		Rwy 30 ldg	8501'



CATEGORY	C	D	E
S-12*	520/45	458	(500-7%)
CIRCLING	580-1½	900-2¾	960-3
	507 (600-1½)	827 (900-2¾)	887 (900-3)

HIRL Rwy 12-30 **L**
MIRL Rwy 18-36 **L**

KING SALMON, ALASKA

58°41'N-156°39'W

KING SALMON (AKN) (PAKN)

Amtd 5 26DEC24

HI-VOR Z or TACAN Z RWY 12