

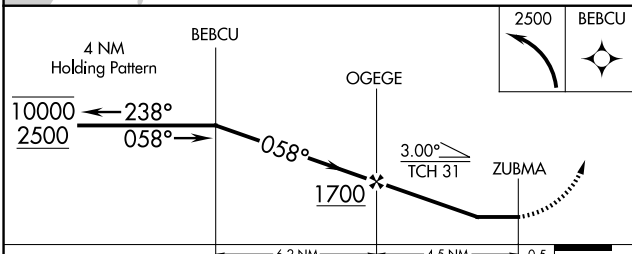
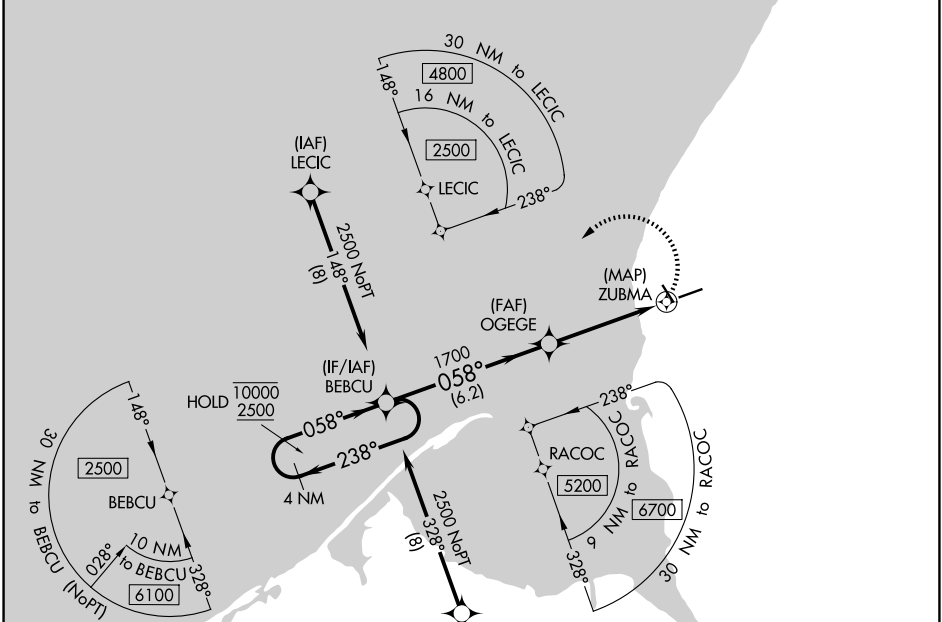
RNAV (GPS) RWY 6

PORT HEIDEN (PTH)(PAPH)

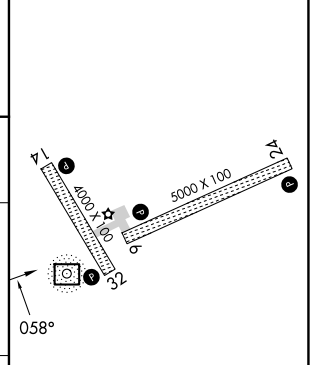
APP CRS 058°	Rwy Ldg TDZE 93 Apt Elev 95
------------------------	---

RNP APCH.	MISSED APPROACH: Climbing left turn to 2500 direct BEBCU and hold.
Rwy 6 helicopter visibility reduction below 1 SM NA.	

AWOS-3P 135.4	ANCHORAGE CENTER 132.9 288.3	CTAF 122.8
-------------------------	--	----------------------



ELEV 95	TDZE 93
----------------	----------------



CATEGORY	A	B	C	D
RNAV MDA	500-1	407 (500-1)	500-1½	407 (500-1½)
CIRCLING	500-1 405 (500-1)	560-1 465 (500-1)	560-1½ 465 (500-1½)	700-2 605 (700-2)

REIL Rwy 6
REIL Rwy 14
MIRL Rwy 6-24 and 14-32

AK, 14 MAY 2026 to 09 JUL 2026

AK, 14 MAY 2026 to 09 JUL 2026