

# HI-ILS or LOC RWY 15

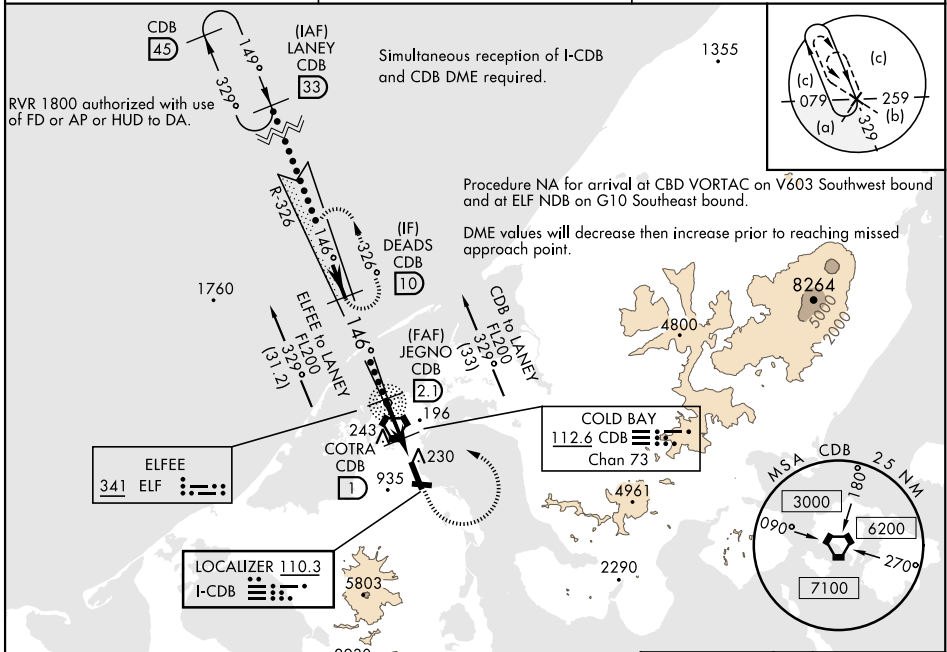
LOC I-CDB <b>110.3</b>	APCH CRS <b>146°</b>	Rwy Idg <b>10,179</b> TDZE <b>75</b> Arprt Elev <b>100</b>	AL-1241 [USAF]	COLD BAY (CDB) (PACD)
---------------------------	-------------------------	--	----------------	-----------------------

**▼** \* When ALS inop, increase CAT E RVR to 4000.  
 \*\* When ALS inop, increase RVR to 5500.  
 \*\*\* Circling not authorized SW of Rwy 15-33.

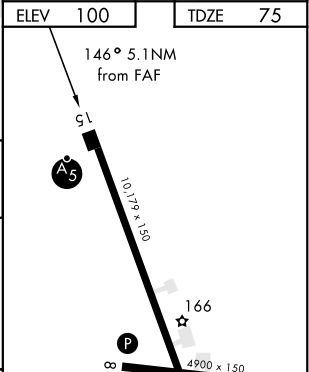
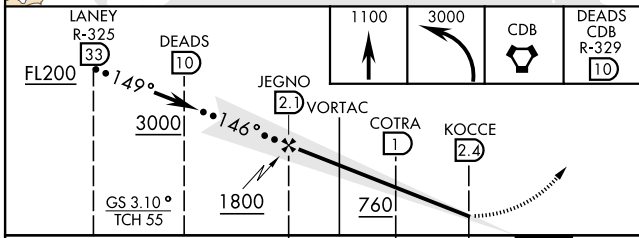
**MALSR**

**MISSED APPROACH:** Climb to 1100, then climbing left turn to 3000 direct CDB VORTAC, then on CDB R-329 to DEADS/CDB 10 DME and hold.

ANCHORAGE CENTER <b>118.5 278.3</b>	COLD BAY RADIO <b>123.6 (CTAF) 0</b>	ASOS <b>135.75</b>
--	---	-----------------------



ELEV 100	TDZE 75
----------	---------



CATEGORY	C	D	E
S-ILS 15 *	275/24	200	(300-½)
S-LOC 15 **	440/35	365	(400-¾)
CIRCLING ***	560-1½ 460 (500-1½)	860-2½ 760 (800-2½)	940-3 840 (900-3)

HIRL all Rwy 0					
FAF to MAP 4.5 NM					
Knots	120	140	160	180	200
Min:Sec	2:15	1:56	1:41	1:30	1:21

COLD BAY, ALASKA 55°12'N-162°44'W COLD BAY (CDB) (PACD)

# HI-ILS or LOC RWY 15

AK, 14 MAY 2026 to 09 JUL 2026

AK, 14 MAY 2026 to 09 JUL 2026