

LOC I-CDB <b>110.3</b>	APP CRS <b>146°</b>	Rwy Ldg <b>10179</b> TDZE <b>75</b> Apt Elev <b>100</b>
---------------------------	------------------------	---------------------------------------------------------------

# ILS or LOC RWY 15

COLD BAY (CDB) (PACD)

DME required.

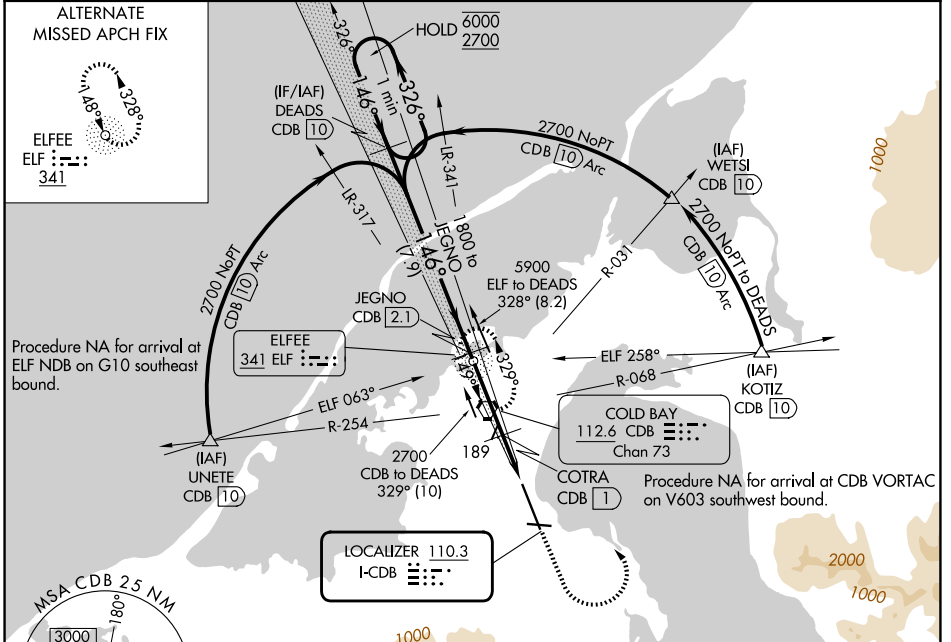
⚠ Circling NA for Cats B/C/D southwest of Rwy 15-33. DME from CDB VORTAC.

⚠ Simultaneous reception of I-CDB and CDB DME required. DME values will decrease then increase prior to reaching missed approach point. Circling NA for Cat A southwest of Rwy 15-33 at night. For inop ALS, increase S-LOC 15 Cats C and D visibility to RVR 5500. #RVR 1800 authorized with use of FD or AP or HUD to DA.

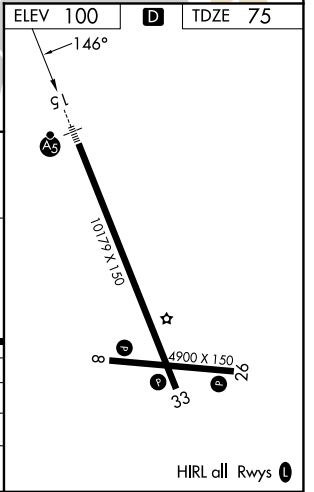
MALSRL

MISSED APPROACH: Climb to 1100 then climbing left turn to 2700 direct CDB VORTAC and hold, continue climb-in-hold to 2700.

ASOS <b>135.75</b>	ANCHORAGE CENTER <b>118.5 278.3</b>	COLD BAY RADIO <b>123.6 (CTAF)</b>
-----------------------	----------------------------------------	---------------------------------------



One Minute Holding Pattern	DEADS CDB 10	JEGNO CDB 2.1	1100	2700	CDB
	6000 ← 326°	1800	↑	↶	⬡
GS 3.10° TCH 55	2700 → 146°	VORTAC	COTRA CDB 1	*CDB 2	*LOC only, CDB 3
	1800		7.9 NM	3.1 NM	1 NM
CATEGORY	A	B	C	D	
S-ILS 15 #	275/24		200 (200-½)		
S-LOC 15	440/24	365 (400-½)	440/35	365 (400-¾)	
CIRCLING	540-1 440 (500-1)	560-1 460 (500-1)	560-1½ 460 (500-½)	860-2½ 760 (800-2½)	



AK, 14 MAY 2026 to 09 JUL 2026

AK, 14 MAY 2026 to 09 JUL 2026