

LOC I-CDB 110.3	APP CRS 326°	Rwy Ldg 10179 TDZE 93 Apt Elev 100
---------------------------	------------------------	---

LOC BC RWY 33

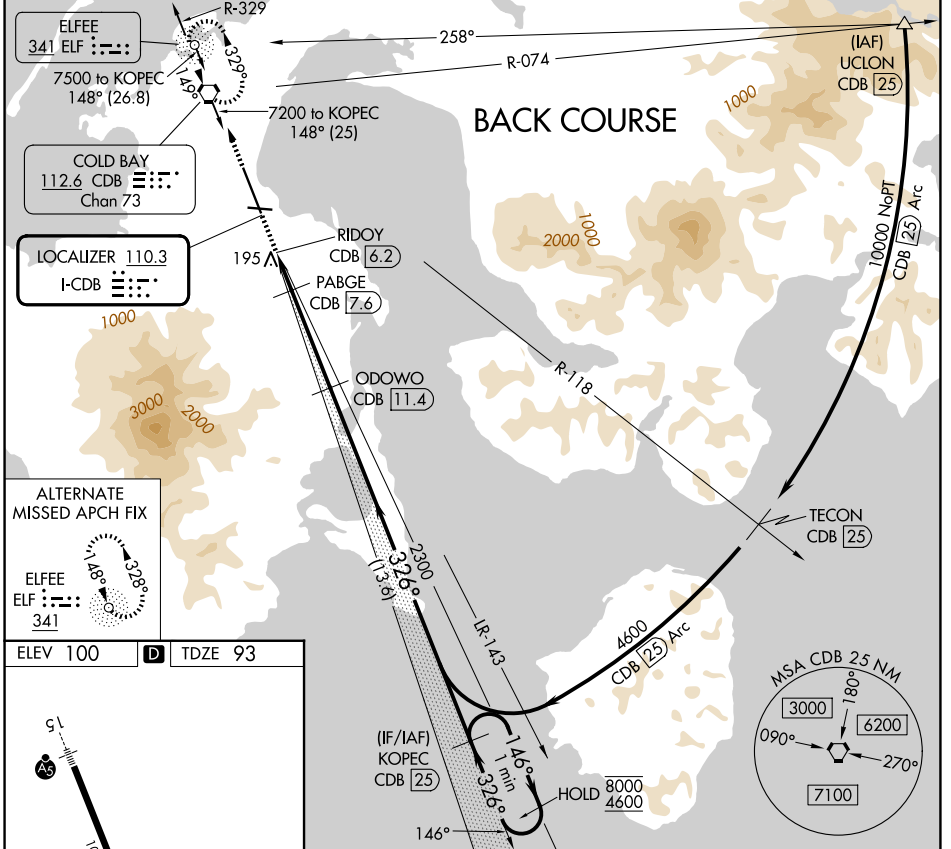
COLD BAY (CDB) (PACD)

DME required.

⚠ Circling NA for Cat A southwest of Rwy 15-33 at night. DME from CDB VORTAC.
 ⚠ Simultaneous reception of I-CDB and CDB DME required. Circling NA for Cats B/C/D southwest of Rwy 15-33.

MISSED APPROACH: Climb to 4000 direct CDB VORTAC and hold, continue climb-in-hold to 4000.

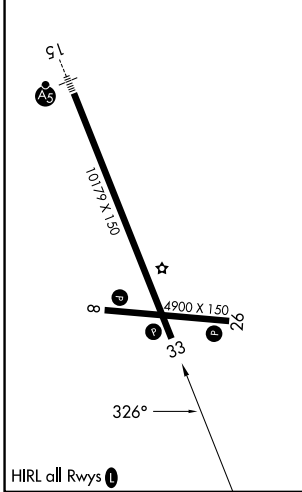
ASOS 135.75	ANCHORAGE CENTER 118.5 278.3	COLD BAY RADIO 123.6 (CTAF) 0
-----------------------	--	---



ALTERNATE MISSED APCH FIX

ELFEF ELF $\dashv\vdash\vdash\vdash$ 341

ELEV 100	D	TDZE 93
----------	----------	---------



4000 CDB

VGSI and descent angles not coincident (VGSI Angle 3.00/TCH 36).

KOPEC CDB [25] One Minute Holding Pattern

146° → 8000

← 326° 4600

Disregard GS indications. Localizer unusable inside CDB VORTAC 6.2 DME.

1100

326°

2300

1.5 NM 1.5 NM 3.8 NM 13.6 NM

CATEGORY	A	B	C	D
S-33		420-1 $\frac{7}{8}$	327 (400-1 $\frac{7}{8}$)	
CIRCLING	540-1 $\frac{7}{8}$ 440 (500-1 $\frac{7}{8}$)	560-1 $\frac{7}{8}$	460 (500-1 $\frac{7}{8}$)	860-2 $\frac{1}{2}$ 760 (800-2 $\frac{1}{2}$)

AK, 14 MAY 2026 to 09 JUL 2026

AK, 14 MAY 2026 to 09 JUL 2026