

**TOP ALTITUDE:
ASSIGNED BY ATC**

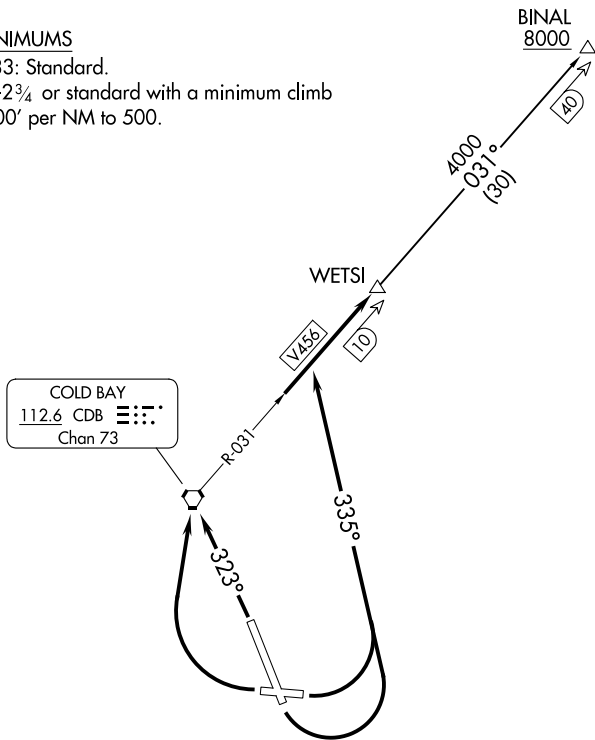
ANCHORAGE CENTER
118.5 278.3
COLD BAY RADIO
123.6

NOTE: DME required.

TAKEOFF MINIMUMS

Rwys 8, 15, 33: Standard.

Rwy 26: 900-2¾ or standard with a minimum climb
of 400' per NM to 500.



NOTE: Chart not to scale.



DEPARTURE ROUTE DESCRIPTION

TAKEOFF RUNWAYS 8, 15: Climbing left turn heading 335°, thence

TAKEOFF RUNWAY 26: Climbing right turn direct CDB VORTAC, thence

TAKEOFF RUNWAY 33: Climb heading 323° direct CDB VORTAC, thence

. . . . intercept CDB VORTAC R-031 to join V456 northeast bound to WETS1
maintain assigned altitude.

BINAL TRANSITION (WETS2.BINAL): From over WETS1 on CDB R-031 to BINAL.