
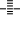


TACAN BER Chan <b>77</b> <b>(113.0)</b>	APP CRS <b>233°</b>	Rwy Ldg <b>6790</b> TDZE <b>17</b> Apt Elev <b>20</b>
---	------------------------	---

# TACAN RWY 23

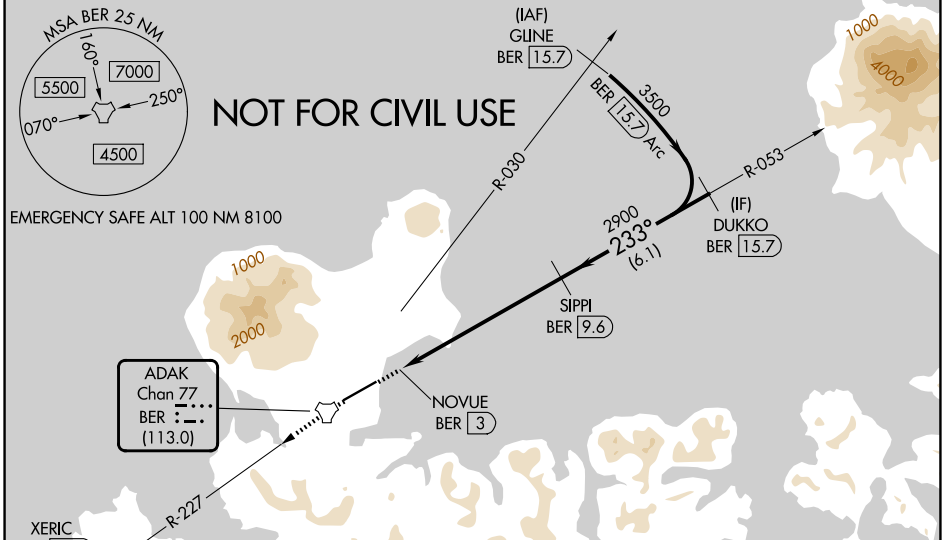
ADAK (ADK)(PADK)

**▼** Circling NA northwest of Rwy 5-23. Rwy 23 helicopter visibility reduction below RVR 5000 NA. Straight-in Rwy 23 at night, operational VGSI required, remain on or above VGSI glidepath until threshold.  
**▲** USAF only: When VGSI inop, Straight-in Rwy 23 authorized at night with command approval.  
 Circling NA at night - unlit terrain 21 feet MSL 200 feet from threshold, 551 feet right of centerline. For inop ALS, increase S-23\* Cat C/D/E visibility to 2½ SM.


MALS  

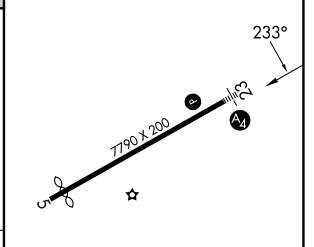
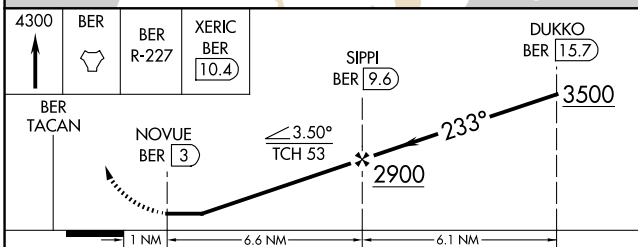
MISSED APPROACH: Climb to 4300 direct BER TACAN and continue on BER R-227 direct XERIC/BER 10.4 DME and hold, continue climb-in-hold to 4300.  
 \*Missed approach requires minimum climb of 375 feet per NM to 2800.

AWOS-3P <b>134.5</b>	ANCHORAGE CENTER <b>126.4 254.3</b>	CTAF <b>122.9</b> 
-------------------------	--	--



4300	BER 	BER R-227	XERIC BER 10.4	DUKKO BER 15.7
BER TACAN	NOVUE BER 3	≤ 3.50° TCH 53	2900	3500
	1 NM	6.6 NM	6.1 NM	

ELEV 20		TDZE 17
---------	--	---------



CATEGORY	A	B	C	D	E
S-23*	800/50	783 (800-1)	800-2	783 (800-2)	
S-23	1620-1¼ 1603 (1600-1¼)	1620-1½ 1603 (1600-1½)	1620-3	1603 (1600-3)	
CIRCLING	1620-1¼ 1600 (1600-1¼)	1620-1½ 1600 (1600-1½)	1620-3 1600 (1600-3)	2440-3	2420 (2500-3)

REIL Rwy 23 

HIRL Rwy 5-23 

AK, 14 MAY 2026 to 09 JUL 2026

AK, 14 MAY 2026 to 09 JUL 2026