

ILS or LOC/DME RWY 28

LOC I-SYA 110.1	APCH CRS 287°	Rwy Idg 10,004 TDZE 93 Arprt Elev 98
---------------------------	-------------------------	---

[USAF]

EARECKSON AS (SYA) (PASY)

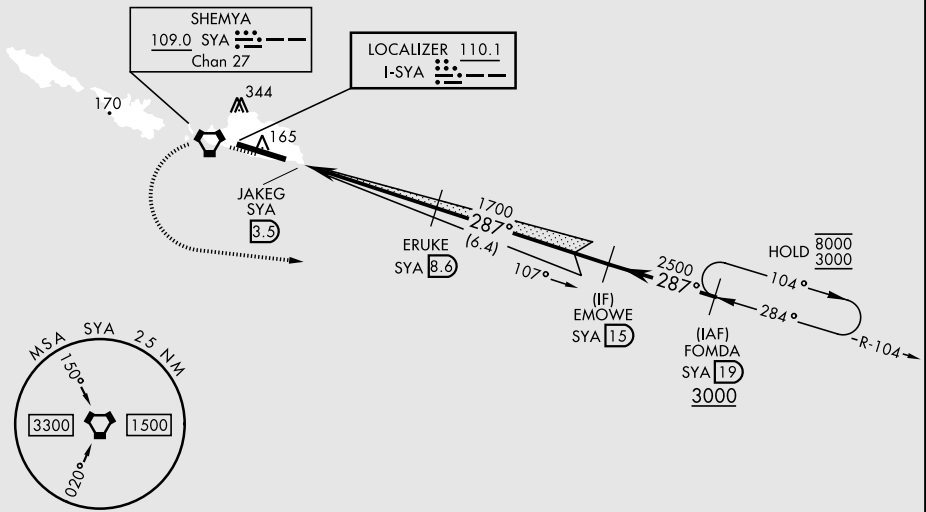
* Circling not authorized N of Rwy 10-28.



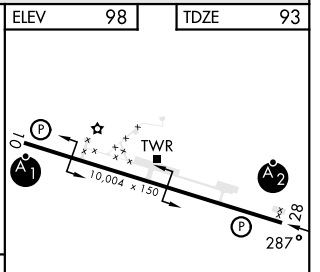
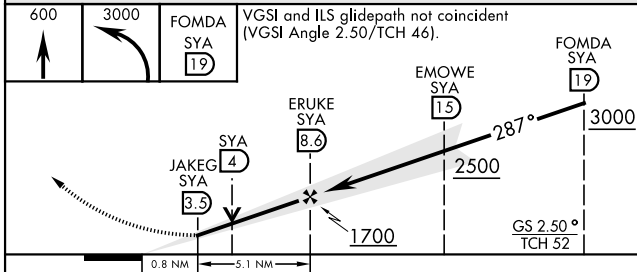
MISSED APPROACH: Climb to 600, then climbing left turn to 3000 direct FOMDA and hold.

ANCHORAGE CENTER 119.1 339.8	CTAF 127.2 352.05
--	-----------------------------

CAUTION: Numerous obstructions in area N of Rwy 10-28.
Missed approach requires use of RNAV or ATC RADAR monitoring.



EMERG SAFE ALT 100 NM 5400



CATEGORY	A	B	C	D	E
S-ILS 28	293-1		200	(200-1)	
S-LOC 28	460-1		367	(400-1)	
CIRCLING*	460-1 362 (400-1)	560-1 462 (500-1)	560-1 1/2 465 (500-1 1/2)	660-2 562 (600-2)	680-2 582 (600-2)

ELEV 98 TDZE 93

HIRL Rwy 10-28
REIL Rwy 10 and 28

ILS or LOC/DME RWY 28

AK, 14 MAY 2026 to 09 JUL 2026

AK, 14 MAY 2026 to 09 JUL 2026