

RNAV (GPS) RWY 10


APCH CRS	Rwy Idg 10,004
107°	TDZE 98
	Arprt Elev 98

[USAF]

EARECKSON AS (SYA) (PASY)

RNP APCH - GFS

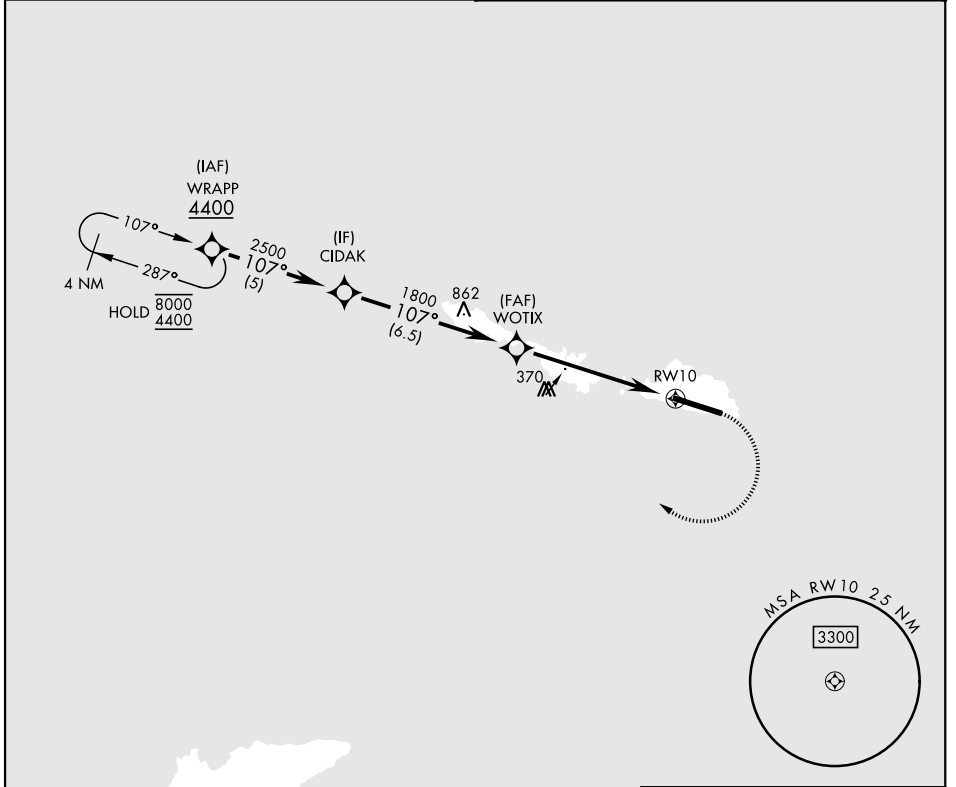
*When ALS inop, increase CAT CDE vis to 1½ miles.
 ** Circling not authorized N of Rwy 10-28.

ALSF-1 

MISSED APPROACH: Climbing right turn to 4400 direct WRAPP and hold, continue climb-in-hold to 4400.

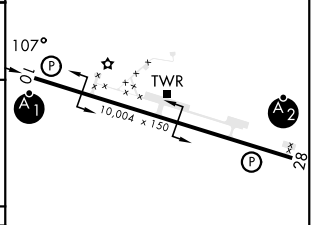
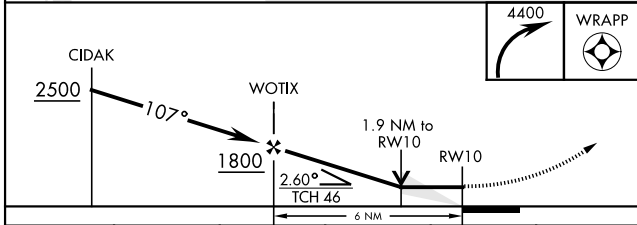
ANCHORAGE CENTER
119.1 339.8

CTAF
127.2 352.05



EMERG SAFE ALT 100 NM 5400

ELEV	98	TDZE	98
------	----	------	----



CATEGORY	A	B	C	D	E
LNAV MDA*	640-1	542 (600-1)	640-1½	542 (600-1½)	
CIRCLING**	640-1	542 (600-1)	640-1½	660-2	680-2
			542 (600-1½)	562 (600-2)	582 (600-2)

HIRL Rwy 10-28 
 REIL Rwy 10 and 28

RNAV (GPS) RWY 10

AK, 14 MAY 2026 to 09 JUL 2026

AK, 14 MAY 2026 to 09 JUL 2026