

# RNAV (GPS) RWY 28

APCH CRS	Rwy Idg <b>10,004</b>
<b>287°</b>	TDZE <b>93</b>
	Arpt Elev <b>98</b>

[USAF]

EARECKSON AS (SYA) (PASY)

RNP APCH - GFS

SALS

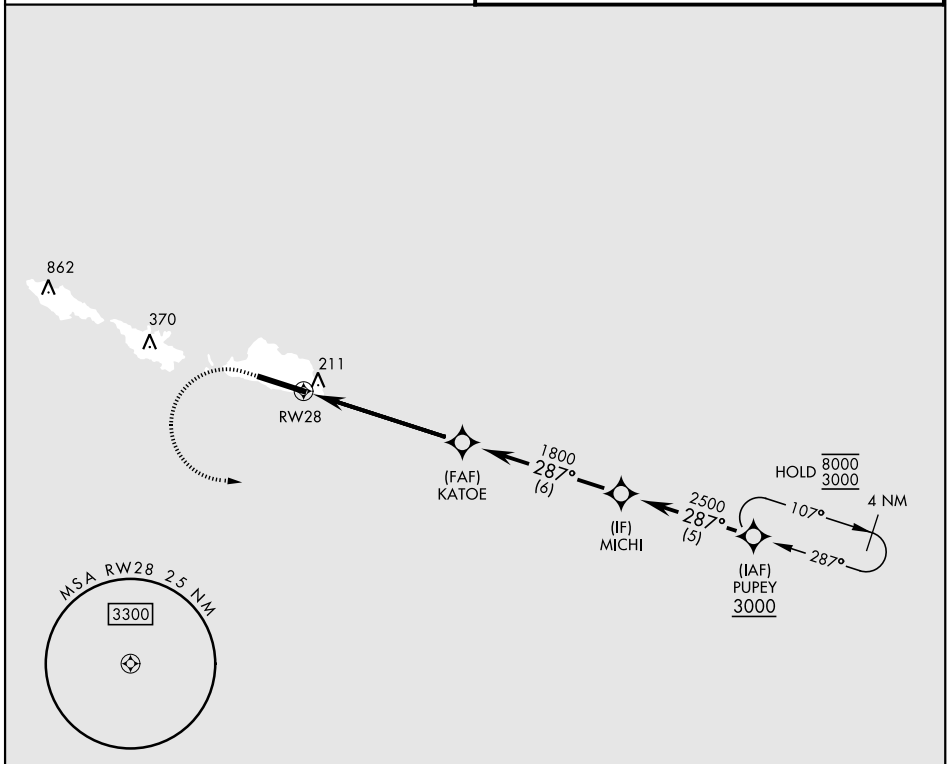
MISSED APPROACH: Climb to 600, then climbing left turn to 3000, direct PUPEY and hold.

\* When ALS inop, increase CAT CDE vis to 1½ miles.  
 \*\* Circling not authorized N of Rwy 10-28.



ANCHORAGE CENTER  
**119.1 339.8**

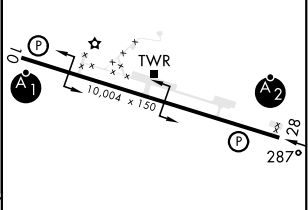
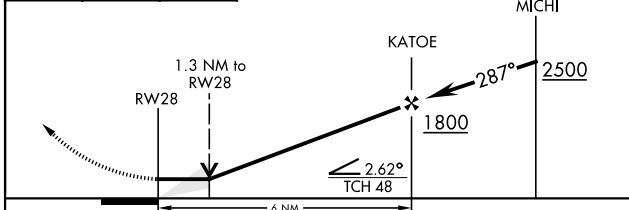
CTAF  
**127.2 352.05**



EMERG SAFE ALT 100 NM 5400

600	3000	PUPEY

ELEV	98	TDZE	93
------	----	------	----



CATEGORY	A	B	C	D	E
LNAV MDA*	480-1		387	(400-1)	
CIRCLING**	480-1 382 (400-1)	560-1 462 (500-1)	560-1½ 462 (500-1½)	660-2 562 (600-2)	680-2 582 (600-2)

HIRL Rwy 10-28   
 REIL Rwy 10 and 28

# RNAV (GPS) RWY 28

AK, 14 MAY 2026 to 09 JUL 2026

AK, 14 MAY 2026 to 09 JUL 2026