

SHEMYA, ALASKA

VOR/DME or TACAN RWY 10

VORTAC SYA 109.0 Chan 27	APCH CRS 092°	Rwy ldg 10,004 TDZE 98 Arpt Elev 98
--	-------------------------	--

[USAF]

EARECKSON AS (SYA) (PASY)

* When ALS inop, increase CAT AB vis to 1½ miles;
CAT CDE vis to 1¼ miles.
** Circling not authorized N of Rwy 10-28.

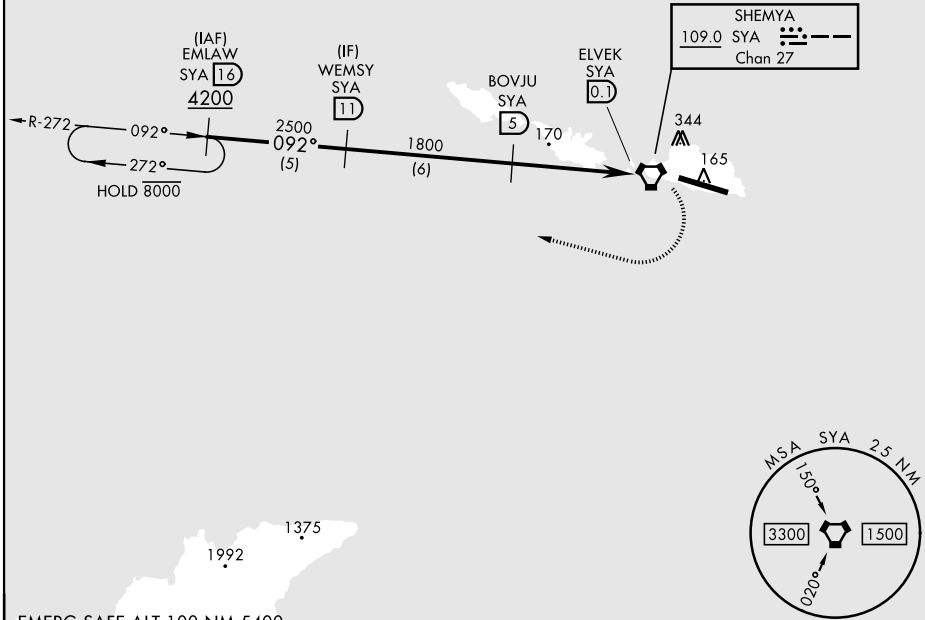


MISSED APPROACH: Climb to 1200, then climbing right turn to 4200, intercept SYA R-272 direct EMLAW and hold.

ANCHORAGE CENTER
119.1 339.8

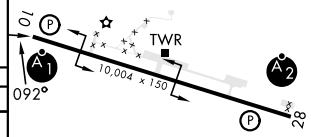
CTAF
127.2 352.05

CAUTION: Numerous obstructions in area N of Rwy 10-28.
Missed approach requires use of RNAV or ATC RADAR monitoring.



EMERG SAFE ALT 100 NM 5400

WEMS SYA 11		BOVJU SYA 5		SYA VORTAC		ELEV 98	TDZE 98
2500		1800		170		EMLAW R-272 16	
092°		2.56°		0.1			
4.9 NM		1.2 NM					
CATEGORY	A	B	C	D	E		
S-10 *	640-1	542 (600-1)	640-1½	542 (600-1½)			
CIRCLING **	640-1½	542 (600-1½)	640-1¾	562 (600-2)	582 (600-2)	HIRL Rwy 10-28 REIL Rwy 10 and 28	



SHEMYA, ALASKA
Amdt 7 05SEP24

52°43'N-174°07'E

EARECKSON AS (SYA) (PASY)

VOR/DME or TACAN RWY 10

AK, 14 MAY 2026 to 09 JUL 2026

AK, 14 MAY 2026 to 09 JUL 2026