

WAAS CH 82110 W36A	APP CRS 355°	Rwy Ldg 4800
		TDZE 179
		Apt Elev 192

RNAV (GPS) RWY 36

ILIAMNA (ILI) (PAIL)

RNP APCH - GPS.

⚠ For uncompensated Baro-VNAV systems, procedure NA below -21°C or above 54°C. When local altimeter setting not received, procedure NA. Circling NA to waterways N, S, E, W.

❄ -26°C

MISSED APPROACH: Climb to 640 then climbing right turn to 8400 direct FORAX and hold, continue climb-in-hold to 8400.

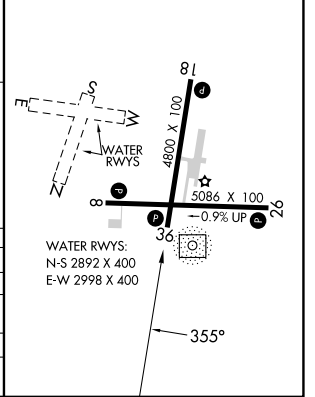
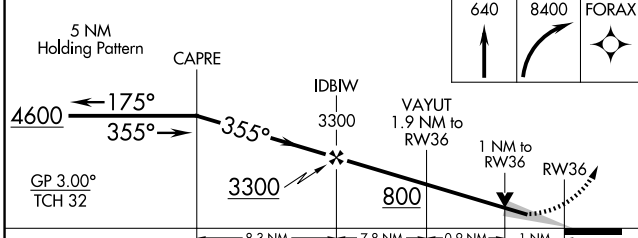
AFIS 134.95	ANCHORAGE CENTER 118.8	ILIAMNA RADIO 123.6 (CTAF) 📶
-----------------------	----------------------------------	---



AK, 14 MAY 2026 to 09 JUL 2026

AK, 14 MAY 2026 to 09 JUL 2026

ELEV 192	TDZE 179
REIL Rwy 26 and 36 📶	
MIRL Rwy 8-26 and 18-36 📶	



CATEGORY	A	B	C	D
LPV DA		429-1	250 (300-1)	
LNAV/VNAV DA		462-1	283 (300-1)	
LNAV MDA		540-1	361 (400-1)	
CIRCLING	740-1	548 (600-1)	820-1 ³ / ₄ 628 (700-1 ³ / ₄)	1700-3 1508 (1600-3)