

RNAV (GPS) RWY 8

ILIAMNA (ILI) (PAIL)

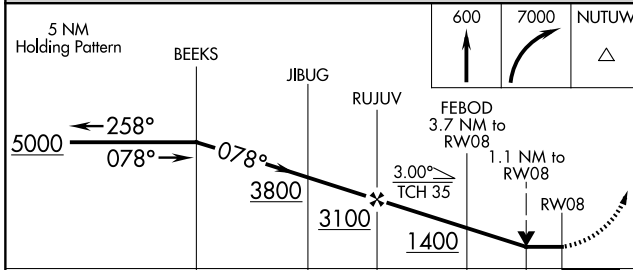
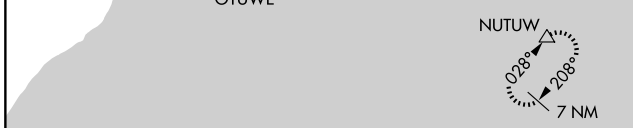
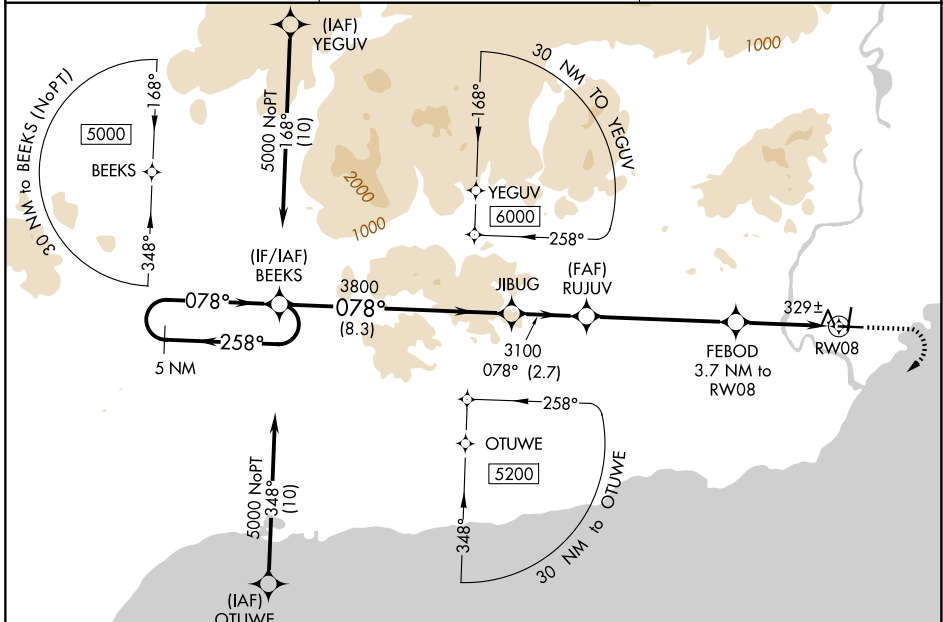
APP CRS 078°	Rwy Ldg 5086
	TDZE 192
	Apt Elev 192

RNP APCH - GPS.

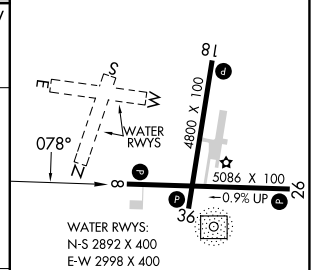
⚠ When local altimeter setting not received, procedure NA.
 ⚠ Rwy 8 helicopter visibility reduction below 3/4 SM NA.
 ❄ -26°C Circling NA to waterways N, S, E, W.

MISSED APPROACH: Climb to 600, then climbing right turn to 7000 direct NUTUW and hold, continue climb-in-hold 7000.

AFIS 134.95	ANCHORAGE CENTER 118.8	ILIAMNA RADIO 123.6 (CTAF) 0
-----------------------	----------------------------------	--



ELEV 192	TDZE 192
----------	----------



CATEGORY	A	B	C	D
LNVA MDA	580-1 388 (400-1)		580-1 388 (400-1 1/8)	
CIRCLING	740-1 548 (600-1)		820-1 628 (700-1 3/4)	1700-3 1508 (1600-3)

REIL Rwy 26 and 36
 MIRL Rwy 8-26 and 18-36

AK, 14 MAY 2026 to 09 JUL 2026

AK, 14 MAY 2026 to 09 JUL 2026