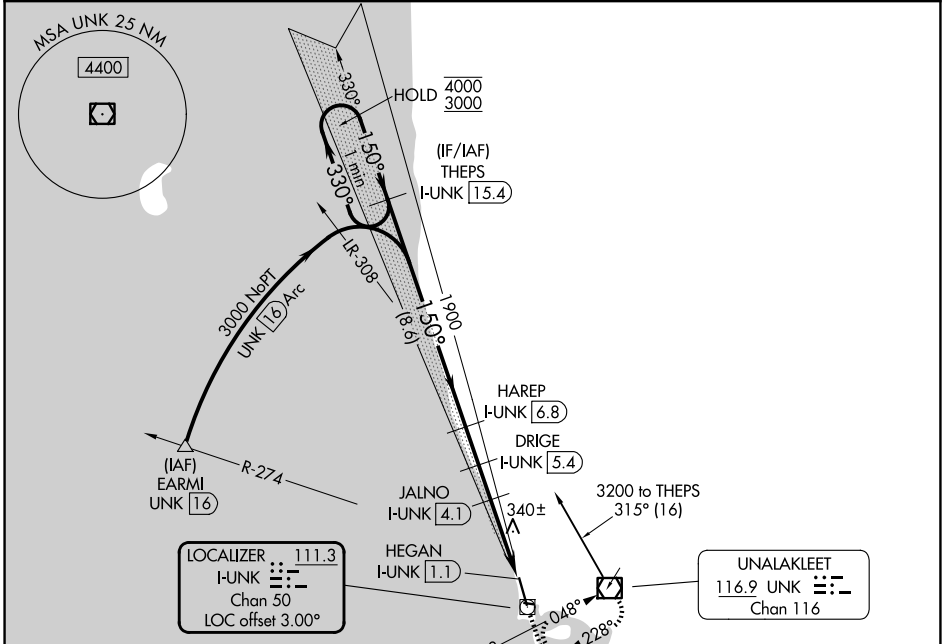


LOC/DME I-UNK <b>111.3</b> Chan 50	APP CRS <b>150°</b>	Rwy Ldg TDZE Apt Elev <b>5900</b> <b>27</b> <b>27</b>
--	------------------------	--

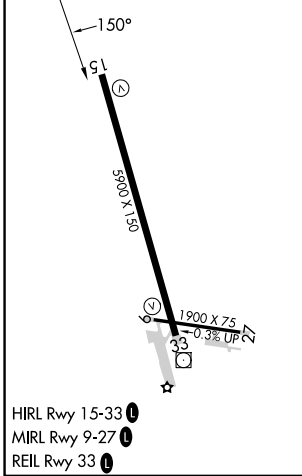
# LOC RWY 15

UNALAKLEET (UNK)(PAUN)

DME required.		MISSED APPROACH: Climb to 1900 then climbing right turn to 3400 direct UNK VOR/DME and hold, continue climb-in-hold to 3400.	
AWOS-3P <b>132.25</b>	ANCHORAGE CENTER <b>135.7 335.5</b>	NOME RADIO <b>122.3</b>	CTAF <b>123.0</b>



ELEV 27	TDZE 27
---------	---------



Procedure NA for arrivals at UNK VOR/DME on V440 eastbound.

	THEPS I-UNK 15.4	HAREP I-UNK 6.8	DRIGE I-UNK 5.4	JALNO I-UNK 4.1	I-UNK 2.5	HEGAN I-UNK 1.1
Use I-UNK DME when on the localizer course.						
One Minute Holding Pattern	4000 ← 330°	3000 → 150°	1900	1440	1020	
	8.6 NM	1.4 NM	1.3 NM	1.6 NM	1.4 NM	
CATEGORY	A	B	C	D		
S-LOC 15	520-1	493 (500-1)	520-1 <sup>3</sup> / <sub>8</sub>	493 (500-1 <sup>3</sup> / <sub>8</sub> )		
CIRCLING	600-1 573 (600-1)	700-1 673 (700-1)	700-2 673 (700-2)	900-2 <sup>3</sup> / <sub>4</sub> 873 (900-2 <sup>3</sup> / <sub>4</sub> )		

AK, 14 MAY 2026 to 09 JUL 2026

AK, 14 MAY 2026 to 09 JUL 2026