

# UNALAKLEET ONE DEPARTURE (OBSTACLE)

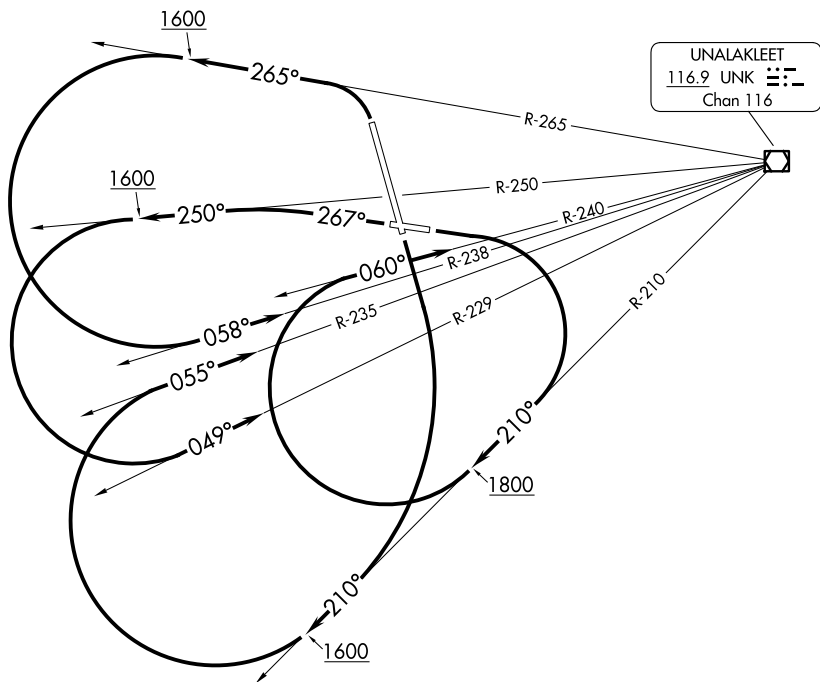
ANCHORAGE CENTER  
135.7 335.5  
AWOS-3P  
132.25  
NOME RADIO  
122.3

### TAKEOFF MINIMUMS

Rwys 15, 27: Standard.

Rwy 9: 400-3 or standard with minimum climb of 220' per NM to 500.

Rwy 33: 400-2¼ or standard with minimum climb of 320' per NM to 600.



UNALAKLEET  
116.9 UNK  
Chan 116

NOTE: Chart not to scale.

(CONTINUED ON FOLLOWING PAGE)

### DEPARTURE ROUTE DESCRIPTION

TAKEOFF RUNWAY 9: Climbing right turn to intercept UNK VOR/DME R-210 to 1800, then climbing right turn to intercept UNK VOR/DME R-240 to UNK VOR/DME before proceeding on course.

TAKEOFF RUNWAY 15: Climbing right turn to intercept UNK VOR/DME R-210 to 1600, then climbing right turn to intercept UNK VOR/DME R-235 to UNK VOR/DME before proceeding on course.

TAKEOFF RUNWAY 27: Climb on heading 267° and UNK VOR/DME R-250 to 1600, then climbing left turn to intercept UNK VOR/DME R-229 to UNK VOR/DME before proceeding on course.

TAKEOFF RUNWAY 33: Climbing left turn to intercept UNK VOR/DME R-265 to 1600, then climbing left turn to intercept UNK VOR/DME R-238 to UNK VOR/DME before proceeding on course.

# UNALAKLEET ONE DEPARTURE (OBSTACLE)

## TAKEOFF OBSTACLE NOTES

- Rwy 9: Buildings beginning 30' from DER, 346' right of centerline, up to 27' AGL/45' MSL. Vehicles on road beginning 99' from DER, crossing extended runway centerline, up to 15' AGL/39' MSL. Catenary 2.2 NM from DER, 2658' left of centerline, 32' AGL/369' MSL. Catenaries, trees beginning 2.3 NM from DER, 2699' left of centerline, up to 37' AGL/402' MSL.
- Rwy 15: Building 111' from DER, 510' right of centerline, 9' AGL/30' MSL. Antenna, building, pole beginning 417' from DER, 278' right of centerline, up to 26' AGL/47' MSL. Antenna, buildings beginning 498' from DER, 520' right of centerline, up to 36' AGL/56' MSL. Antenna, light pole beginning 1050' from DER, 425' right of centerline, up to 45' AGL/64' MSL. Tower 2118' from DER, 140' right of centerline, 66' AGL/82' MSL. Poles, catenary, antenna beginning 492' from DER, 594' left of centerline, up to 32' AGL/46' MSL. Catenary, pole beginning 689' from DER, 585' left of centerline, up to 33' AGL/47' MSL. Antenna 1276' from DER, 136' left of centerline, 40' AGL/60' MSL. Building 1280' from DER, 133' left of centerline, 62' MSL.
- Rwy 27: Vegetation 10' from DER, 308' right of centerline, 25' MSL. Fence beginning 53' from DER, 425' left of centerline, up to 8' AGL/28' MSL. Terrain 244' from DER, 333' right of centerline, 33' MSL.
- Rwy 33: Vehicles on road, tree beginning 12' from DER, 145' right of centerline, up to 15' AGL/48' MSL. Vehicles on road 674' from DER, 9' left of centerline, 15' AGL/51' MSL. Trees beginning 1.2 NM from DER, 1978' right of centerline, up to 36' AGL/251' MSL. Trees, vegetation beginning 1.3 NM from DER, 1965' right of centerline, up to 32' AGL/291' MSL. Trees beginning 1.4 NM from DER, 1598' right of centerline, up to 33' AGL/334' MSL. Trees, terrain, vegetation beginning 1.5 NM from DER, 1596' right of centerline, up to 31' AGL/408' MSL. Terrain, vegetation, tree beginning 1.6 NM from DER, 1397' right of centerline, up to 26' AGL/414' MSL.

AK, 14 MAY 2026 to 09 JUL 2026

AK, 14 MAY 2026 to 09 JUL 2026