

(AMOTT.AMOTT4) 24025
AMOTT FOUR ARRIVAL

TED STEVENS ANCHORAGE INTL (ANC)(PANC)
 AL-1500 (FAA) ANCHORAGE, ALASKA

ANCHORAGE APP CON
 126.4 270.25
 ANC/PANC D-ATIS
 135.5
 MRI/PAMR ATIS
 124.25
 PAED ATIS*
 124.3 273.5

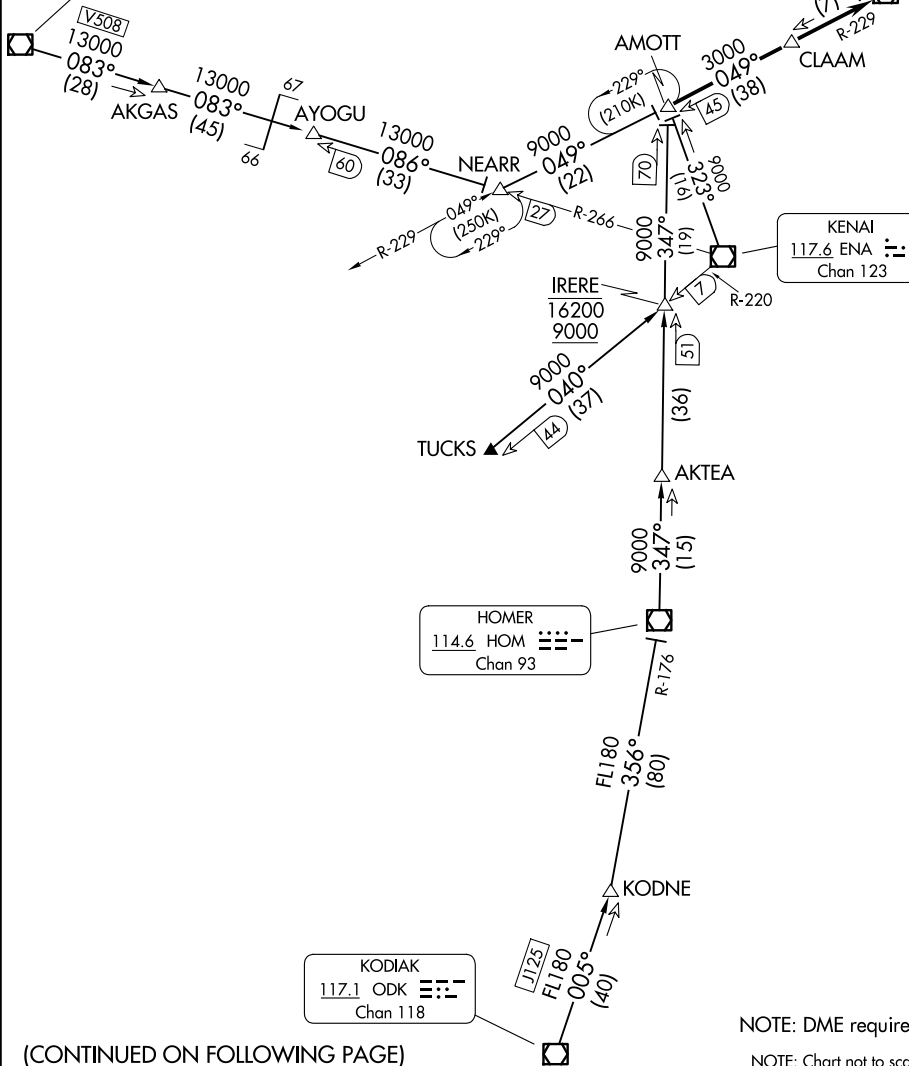
SPARREVOHN
 117.2 SQA
 Chan 119

ANCHORAGE
 113.15 TED
 Chan 78(Y)
 3000

KENAI
 117.6 ENA
 Chan 123

HOMER
 114.6 HOM
 Chan 93

KODIAK
 117.1 ODK
 Chan 118



(CONTINUED ON FOLLOWING PAGE)

NOTE: DME required.
 NOTE: Chart not to scale.

AK, 14 MAY 2026 to 09 JUL 2026

AK, 14 MAY 2026 to 09 JUL 2026

AMOTT FOUR ARRIVAL
 (AMOTT.AMOTT4) 29MAR18

ANCHORAGE, ALASKA
 TED STEVENS ANCHORAGE INTL (ANC)(PANC)

ARRIVAL ROUTE DESCRIPTION

HOMER TRANSITION (HOM.AMOTT4): From over HOM VOR/DME on HOM R-347 to AMOTT. Thence. . . .

KENAI TRANSITION (ENA.AMOTT4): From over ENA VOR/DME on ENA R-323 to AMOTT. Thence. . . .

KODIAK TRANSITION (ODK.AMOTT4): From over ODK VOR/DME on ODK R-005 to KODNE, then on HOM R-176 to HOM VOR/DME, then on HOM R-347 to AMOTT. Thence. . . .

SPARREVOHN TRANSITION (SQA.AMOTT4): From over SQA VOR/DME on SQA R-083 to AKGAS, then on SQA R-083 and ENA R-266 to AYOGU, then on ENA R-266 to NEARR, then on TED R-229 to AMOTT. Thence. . . .

TUCKS TRANSITION (TUCKS.AMOTT4): From over TUCKS on ENA R-220 to IRERE, then on HOM R-347 to AMOTT. Thence. . . .

. . . .from over AMOTT on TED R-229 to cross TED VOR/DME at 3000.
Expect RADAR vectors to final approach course after AMOTT.

AK, 14 MAY 2026 to 09 JUL 2026

AK, 14 MAY 2026 to 09 JUL 2026