

# FFITZ FOUR DEPARTURE (RNAV)

AK, 14 MAY 2026 to 09 JUL 2026

**TOP ALTITUDE:**  
10000

- D-ATIS 135.5
- CUNC DEL 119.4 323.1
- GND CON 121.9 338.25
- ANCHORAGE TOWER 118.3 257.8
- ANCHORAGE DEP CON 118.6 290.5

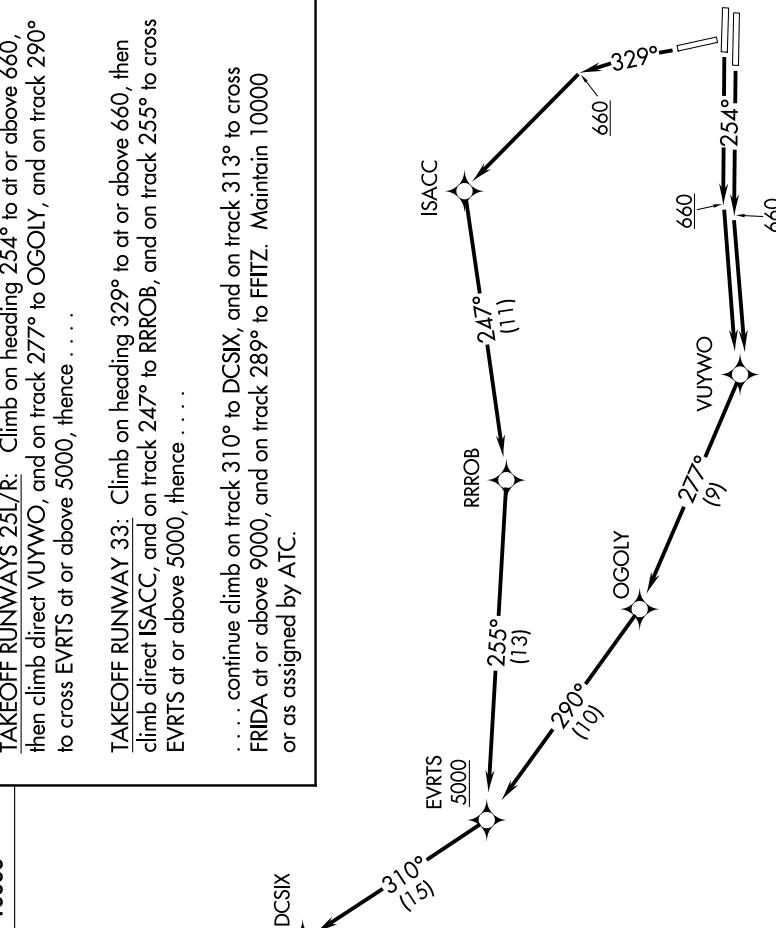
**DEPARTURE ROUTE DESCRIPTION**

**TAKEOFF RUNWAYS 25L/R:** Climb on heading 254° to at or above 660, then climb direct VUYWO, and on track 277° to OGOLY, and on track 290° to cross EVRTS at or above 5000, thence . . . .

**TAKEOFF RUNWAY 33:** Climb on heading 329° to at or above 660, then climb direct ISACC, and on track 247° to RRROB, and on track 255° to cross EVRTS at or above 5000, thence . . . .

. . . . continue climb on track 310° to DCSIX, and on track 313° to cross FRIDA at or above 9000, and on track 289° to FFITZ. Maintain 10000 or as assigned by ATC.

- FFITZ  $\triangle$
- ANCHORAGE TOWER 118.3 257.8
- ANCHORAGE DEP CON 118.6 290.5
- FRIDA  $\triangle$  9000
- DCSIX  $\diamond$
- EVRTS  $\diamond$  5000
- RRROB  $\diamond$
- OGOLY  $\diamond$
- VUYWO  $\diamond$
- ISACC  $\diamond$



**TAKEOFF MINIMUMS**  
 Rwy 7L/R, 15: NA-Air Traffic.  
 Rwy 25L/R, 33: Standard.  
 NOTE: Propeller-driven aircraft only.  
 NOTE: GPS required.  
 NOTE: RADAR required.  
 NOTE: RNAV-1.

AK, 14 MAY 2026 to 09 JUL 2026