


LOC/DME I-BSC <b>111.75</b> Chan <b>54(Y)</b>	APP CRS <b>149°</b>	Rwy Ldg TDZE <b>151</b> Apt Elev <b>151</b>
-----------------------------------------------------	------------------------	---------------------------------------------------

# ILS RWY 15

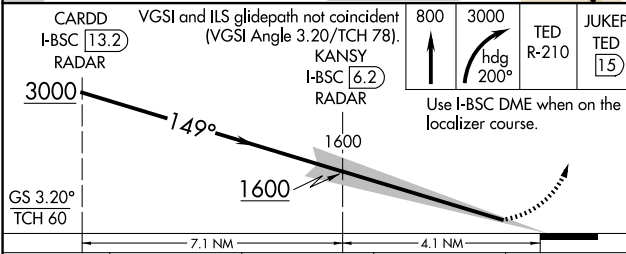
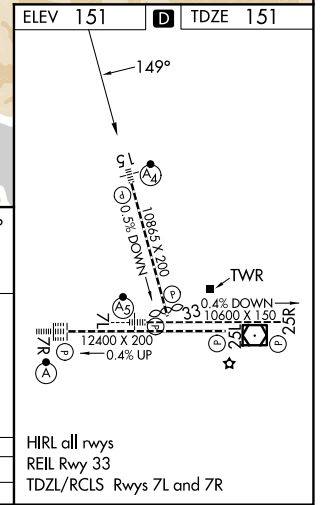
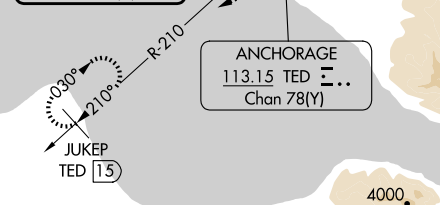
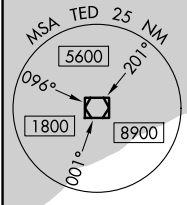
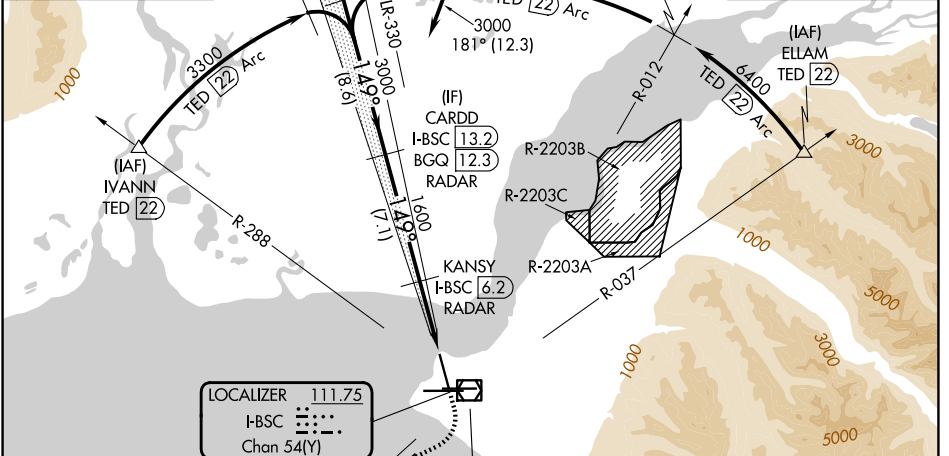
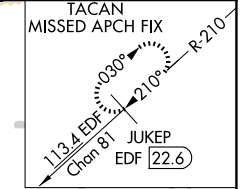
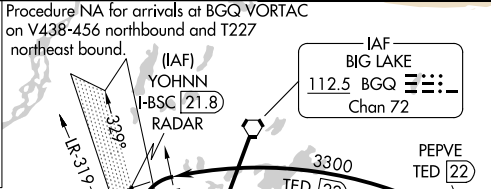
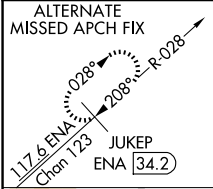
## TED STEVENS ANCHORAGE INTL (ANC) (PANC)

DME required.

**21°C** Inop table does not apply.

MALSF  MISSED APPROACH: Climb to 800 then climbing right turn to 3000 on heading 200° and TED VOR/DME R-210 to JUKEP/TED 15 DME and hold. (TACAN aircraft climb to 800 then climbing right turn to 3000 on heading 200 and on EDF TACAN R-210 to JUKEP/EDF 22.6 DME and hold

D-ATIS <b>135.5</b>	ANCHORAGE APP CON <b>118.6 290.5</b>	ANCHORAGE TOWER <b>118.3 257.8</b>	GND CON <b>121.9 338.25</b>
------------------------	-----------------------------------------	---------------------------------------	--------------------------------



CATEGORY	A	B	C	D
S-ILS 15	351/40	200 (200-3/4)	401/40	250 (300-3/4)

# ILS RWY 15

AK, 14 MAY 2026 to 09 JUL 2026

AK, 14 MAY 2026 to 09 JUL 2026