

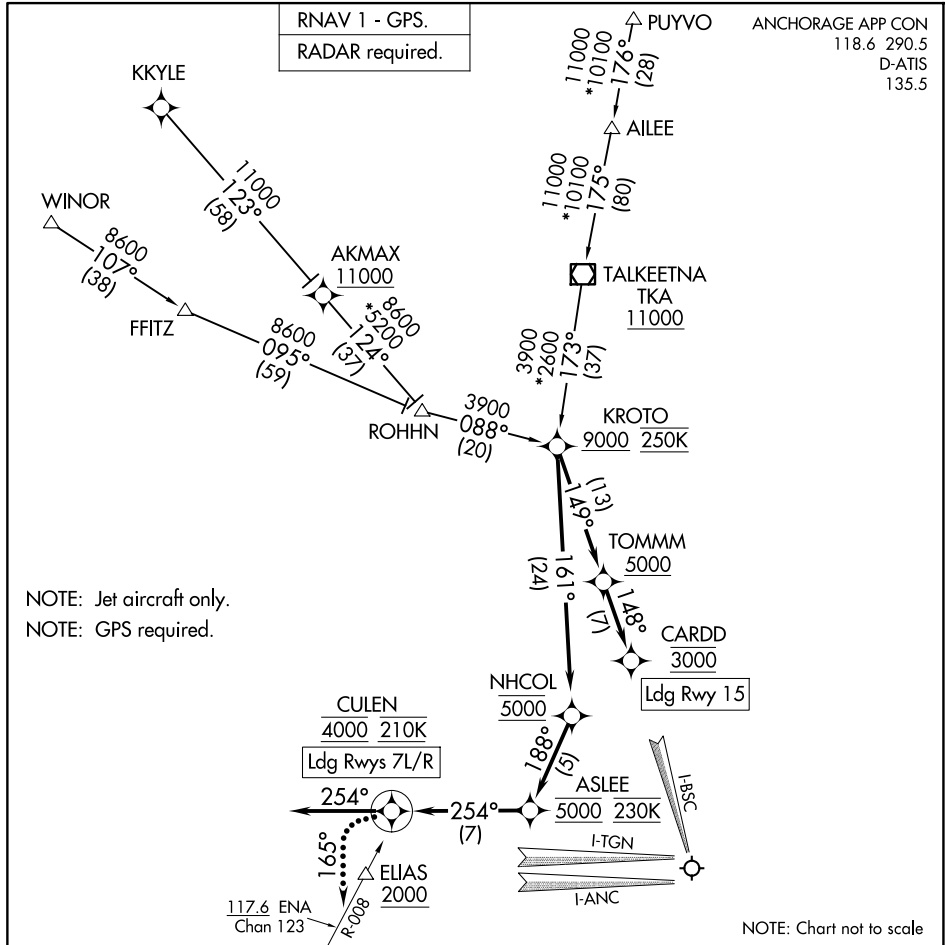
(KROTO.KROTO5) 24305

# KROTO FIVE ARRIVAL (RNAV)

TED STEVENS ANCHORAGE INTL (ANC)(PANC)  
AL-1500 (FAA) ANCHORAGE, ALASKA

RNAV 1 - GPS.  
RADAR required.

ANCHORAGE APP CON  
118.6 290.5  
D-ATIS  
135.5



## ARRIVAL ROUTE DESCRIPTION

KYLE TRANSITION (KKYLE.KROTO5)

PUYVO TRANSITION (PUYVO.KROTO5)

WINOR TRANSITION (WINOR.KROTO5)

LANDING RUNWAYS 7L/R: From KROTO on track 161° to cross NHCOL at 5000, then on track 188° to cross ASLEE at 5000 and at 230K, then on track 254° to cross CULEN at 4000 and at 210K, then on track 254°. Expect RADAR vectors to final approach course.

LANDING RUNWAY 15: From KROTO on track 149° to cross TOMMM at or above 5000, then on track 148° to cross CARDD at 3000. Expect ILS or RNAV RWY 15 approach.

### LOST COMMUNICATIONS

RUNWAYS 7L/R: After CULEN, turn left heading 165°, intercept the ENA VOR/DME R-008 to cross ELIAS at or above 2000 and proceed on the ILS or LOC RWY 7R approach.

RUNWAY 15: After CARDD proceed on the ILS RWY 15 approach.

# KROTO FIVE ARRIVAL (RNAV)

(KROTO.KROTO5) 31OCT24

ANCHORAGE, ALASKA  
TED STEVENS ANCHORAGE INTL (ANC)(PANC)

AK, 14 MAY 2026 to 09 JUL 2026

AK, 14 MAY 2026 to 09 JUL 2026