

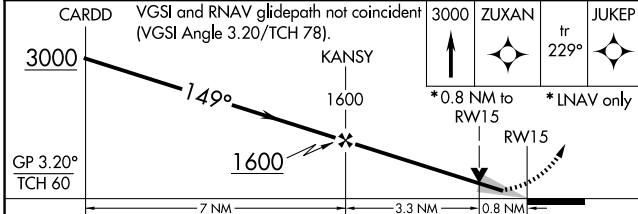
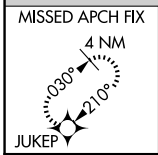
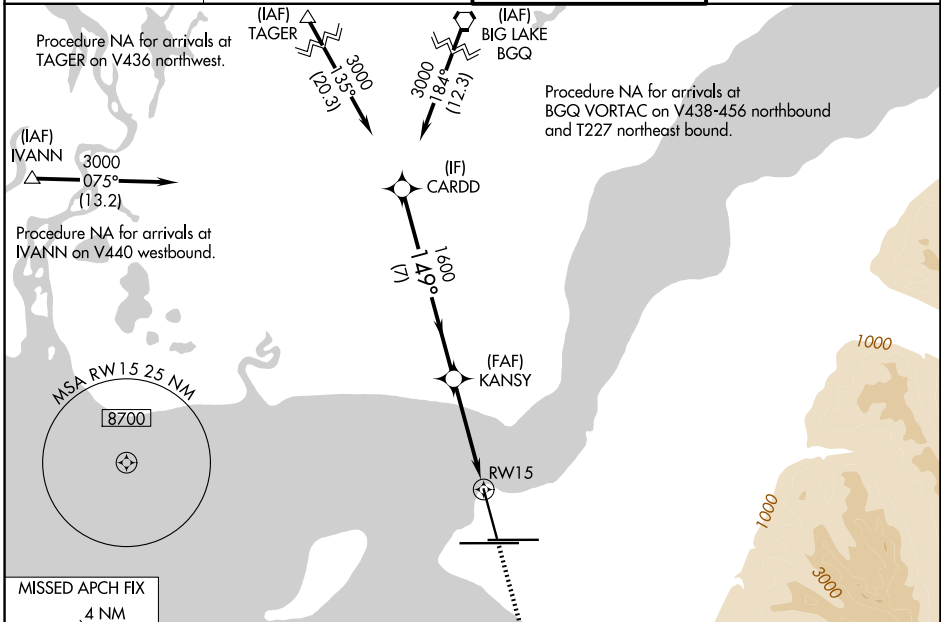
WAAS CH <b>90115</b> <b>W15A</b>	APP CRS <b>149°</b>	Rwy Ldg <b>10000</b> TDZE <b>151</b> Apt Elev <b>151</b>
--	------------------------	--

# RNAV (GPS) RWY 15

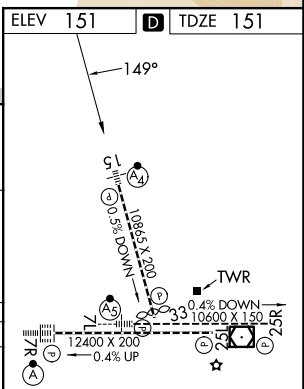
TED STEVENS ANCHORAGE INTL (ANC) (PANC)

RNP APCH.	MALSF	MISSED APPROACH: Climb to 3000 direct ZUXAN and on track 229° to JUKEP and hold.
<p>▼ Inop table does not apply to LPV, LNAV/VNAV. For uncompensated Baro-VNAV systems, LNAV/VNAV NA below -21°C or above 54°C.</p> <p>⚠ -21°C For inop ALS, increase LNAV Cat C/D visibility to 1 3/8 SM.</p>		

D-ATIS <b>135.5</b>	ANCHORAGE APP CON <b>118.6 290.5</b>	ANCHORAGE TOWER <b>118.3 257.8</b>	GND CON <b>121.9 338.25</b>
------------------------	---	---------------------------------------	--------------------------------



CATEGORY	A	B	C	D
LPV DA	351/40	200 (200-3/4)	401/40	250 (300-3/4)
LNAV/VNAV DA	404/40 253 (300-3/4)			
LNAV MDA	600/40	449 (500-3/4)	600/60	449 (500-1 1/4)
CIRCLING	700-1	549 (600-1)	800-1 3/4 649 (700-1 3/4)	920-2 1/2 769 (800-2 1/2)



AK, 14 MAY 2026 to 09 JUL 2026

AK, 14 MAY 2026 to 09 JUL 2026