

APP CRS Rwy Ldg **10400**
329° TDZE **121**
 Apt Elev **151**

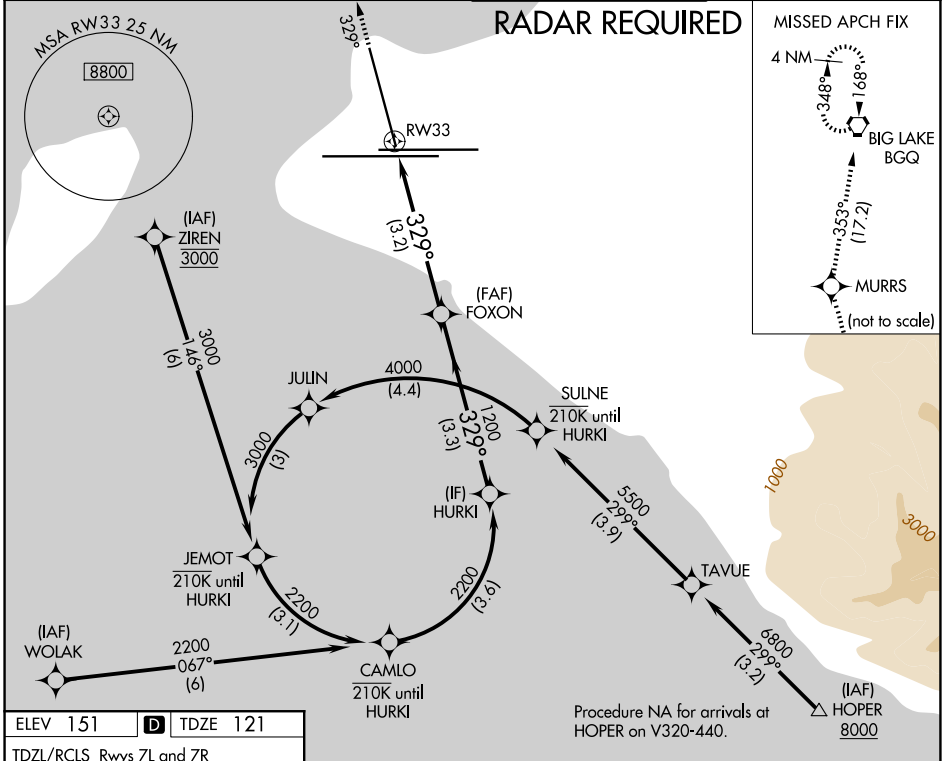
RNAV (RNP) RWY 33

TED STEVENS ANCHORAGE INTL (ANC) (PANC)

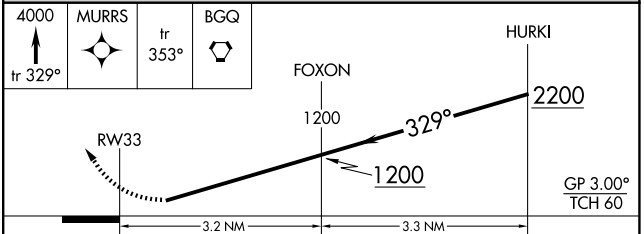
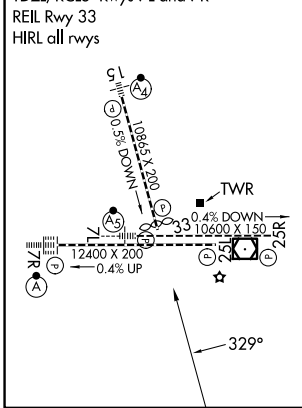
RNP AR APCH. RF required.
 For uncompensated Baro-VNAV systems,
 procedure NA below -17°C or above 54°C.

MISSED APPROACH: Climb to 4000 on the RNAV
 missed approach route to BGQ VORTAC and hold.

D-ATIS 135.5	ANCHORAGE APP CON 118.6 290.5	ANCHORAGE TOWER 118.3 257.8	GND CON 121.9 338.25
------------------------	---	---------------------------------------	--------------------------------



ELEV 151 **D** TDZE 121
 TDZL/RCLS Rwys 7L and 7R
 REIL Rwy 33
 HIRL all rwys



CATEGORY	A	B	C	D
RNP 0.11 DA		463-1	342 (400-1)	
RNP 0.20 DA		525-1 1/8	404 (400-1 1/8)	
RNP 0.30 DA		687-1 5/8	566 (600-1 5/8)	

AUTHORIZATION REQUIRED

AK, 14 MAY 2026 to 09 JUL 2026

AK, 14 MAY 2026 to 09 JUL 2026