

TURNAGAIN EIGHT DEPARTURE

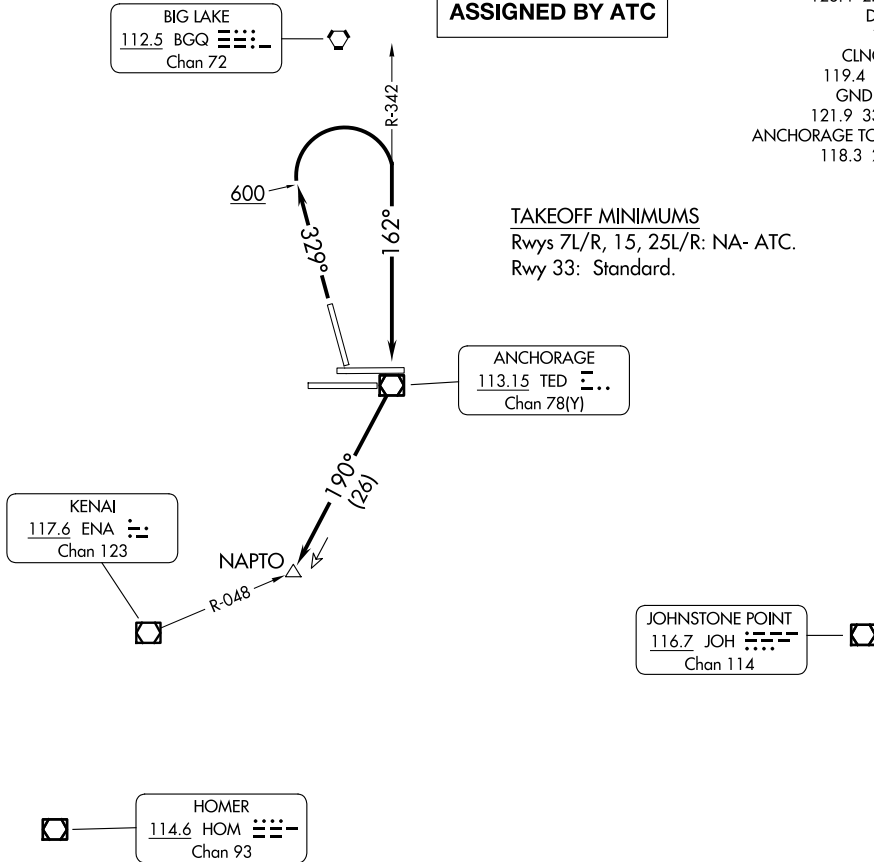
TED STEVENS ANCHORAGE INTL (ANC) (PANC)
AL-1500 (FAA) ANCHORAGE, ALASKA

**TOP ALTITUDE:
ASSIGNED BY ATC**

ANCHORAGE DEP CON	126.4	270.25
D-ATIS		135.5
CLNC DEL	119.4	323.1
GND CON	121.9	338.25
ANCHORAGE TOWER	118.3	257.8

TAKEOFF MINIMUMS

Rwys 7L/R, 15, 25L/R: NA- ATC.
Rwy 33: Standard.



NOTE: RADAR required.

NOTE: Do not exceed 200K until TED VOR/DME.

NOTE: Chart not to scale.

DEPARTURE ROUTE DESCRIPTION

TAKEOFF RUNWAY 33: Climb on heading 329° to 600, then climbing right turn to 2000 on TED R-342 to TED VOR/DME, then on TED R-190 to NAPTO. Maintain ATC assigned altitude. Expect RADAR vectors to assigned route. Expect further clearance to filed altitude within 10 minutes after departure.

TURNAGAIN EIGHT DEPARTURE

10OCT19

ANCHORAGE, ALASKA
TED STEVENS ANCHORAGE INTL (ANC) (PANC)

AK, 14 MAY 2026 to 09 JUL 2026

AK, 14 MAY 2026 to 09 JUL 2026