

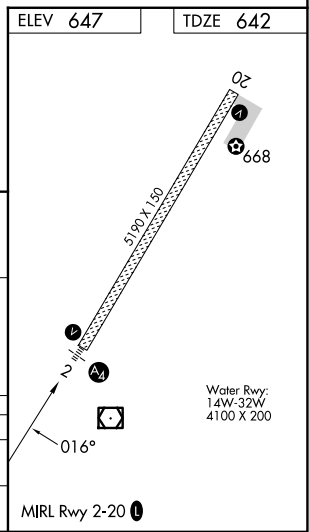
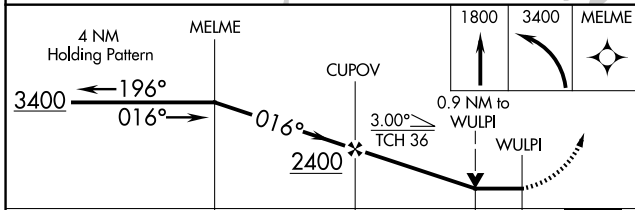
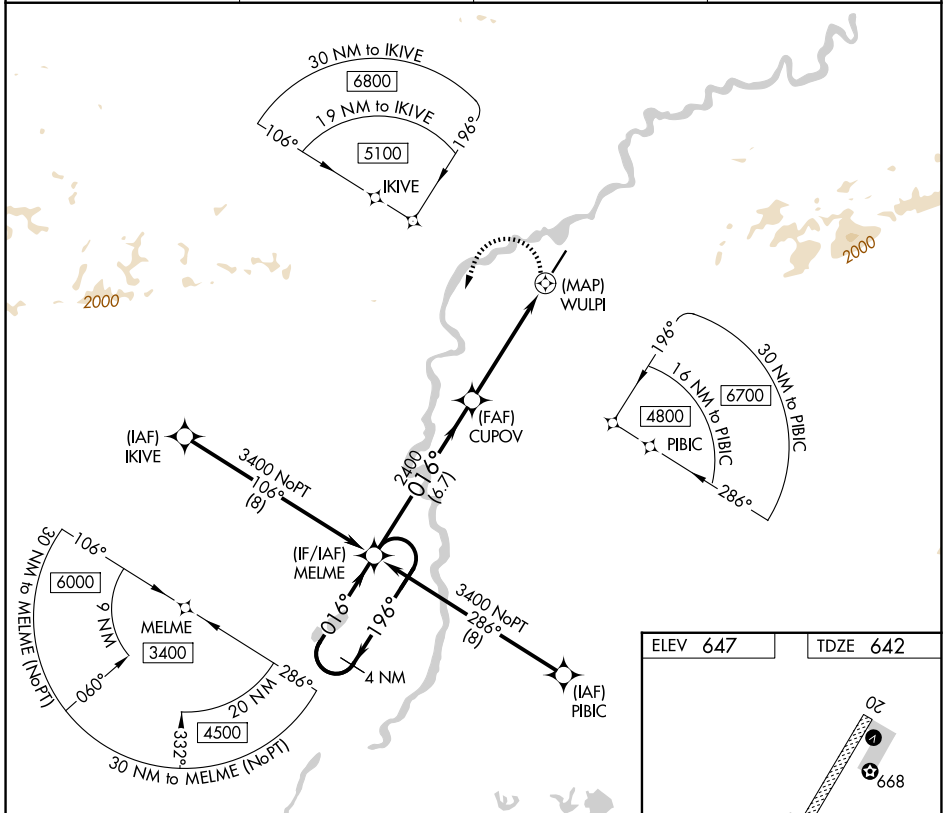
APP CRS	Rwy Ldg 5190
016°	TDZE 642
	Apt Elev 647

RNAV (GPS) RWY 2

BETTLES(BTT)(PABT)

RNP APCH.	MALS	MISSED APPROACH: (Do not exceed 230K until MELME) Climb to 1800 then climbing left turn to 3400 direct MELME and hold.
<p>▼ Inoperative table does not apply. Circling NA east of Rwy 2-20.</p> <p>⚠ For inop ALS, increase Cat C/D visibility to 1 3/4 SM. Rwy 2 helicopter visibility reduction below 3/4 SM NA.</p> <p>❄ -44°C</p>		

ASOS 135.45	ANCHORAGE CENTER 124.6 352.0	FAIRBANKS RADIO 122.2	CTAF 122.9
-----------------------	--	---------------------------------	----------------------



CATEGORY	A	B	C	D
LNVA MDA	1100-1 458 (500-1)			
CIRCLING	1100-1 453 (500-1)	1320-2 673 (700-2)	1320-2 1/4 673 (700-2 1/4)	

AK, 14 MAY 2026 to 09 JUL 2026

AK, 14 MAY 2026 to 09 JUL 2026