

RNAV (GPS) RWY 20

BETTLES(BTT)(PABT)

APP CRS	Rwy Ldg 5190
191°	TDZE 647
	Apt Elev 647

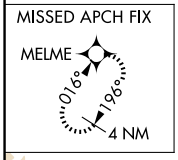
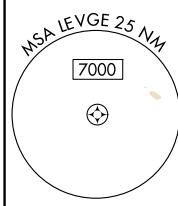
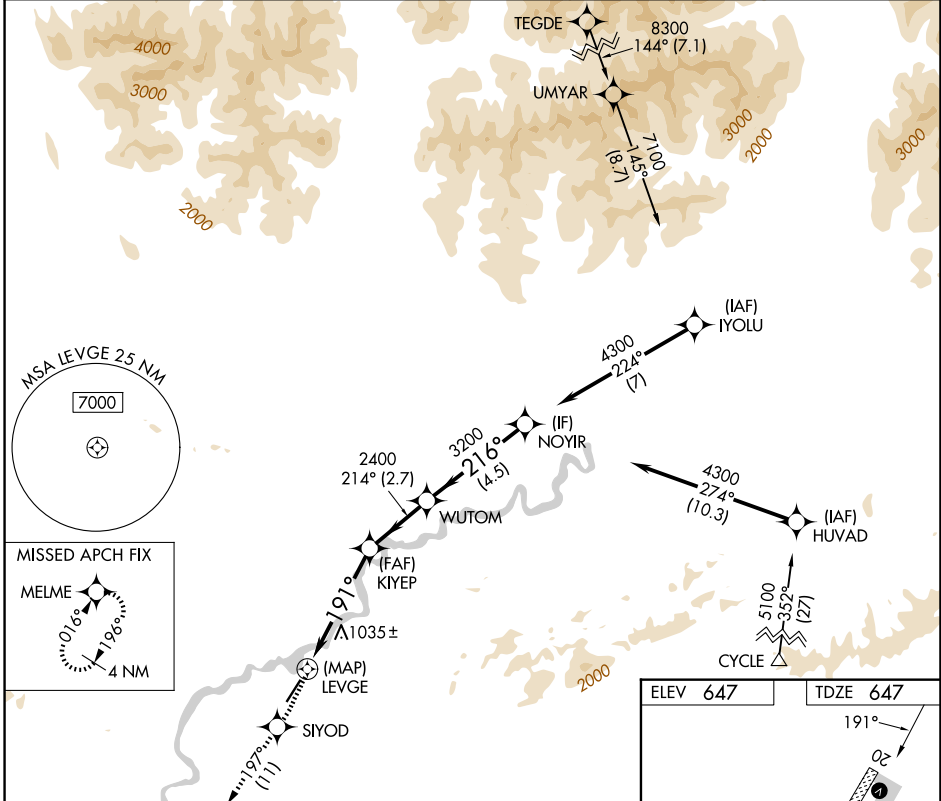
RNP APCH.

⚠ Circling NA east of Rwy 2-20. Rwy 20 helicopter visibility reduction below 3/4 SM NA.

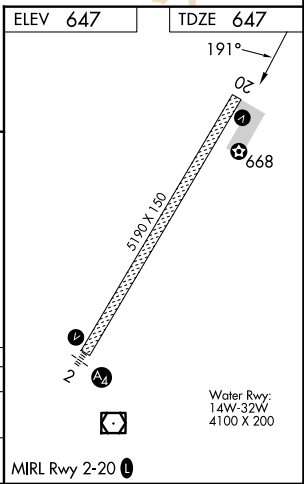
❄ -44°C

MISSED APPROACH: Climb to 3200 direct SIYOD and on track 197° to MELME and hold.

ASOS 135.45	ANCHORAGE CENTER 124.6 352.0	FAIRBANKS RADIO 122.2	CTAF 122.9
-----------------------	--	---------------------------------	----------------------



3200	SIYOD	tr 197°	MELME			
				WUTOM	NOYIR	
		1.4 NM to LEVGE	≤ 3.00°	214°	216°	
		LEVGE	TCH 52	2400	4300	
		0.4	1.4 NM	3.5 NM	2.7 NM	4.5 NM
CATEGORY	A	B	C	D		
LNVA MDA	1300-1	653 (700-1)	1300-1 7/8	653 (700-1 7/8)		
CIRCLING	1300-1	653 (700-1)	1320-2	1320-2 1/4	673 (700-2 1/4)	



AK, 14 MAY 2026 to 09 JUL 2026

AK, 14 MAY 2026 to 09 JUL 2026