

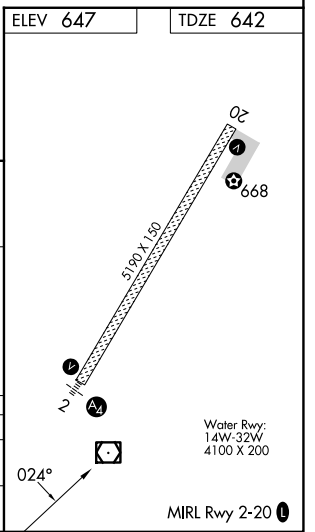
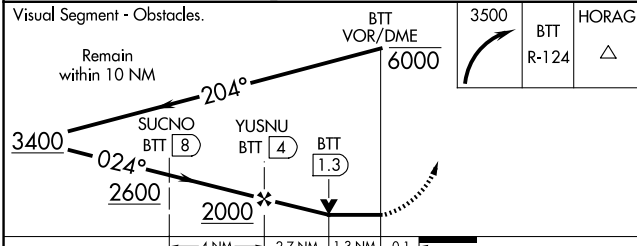
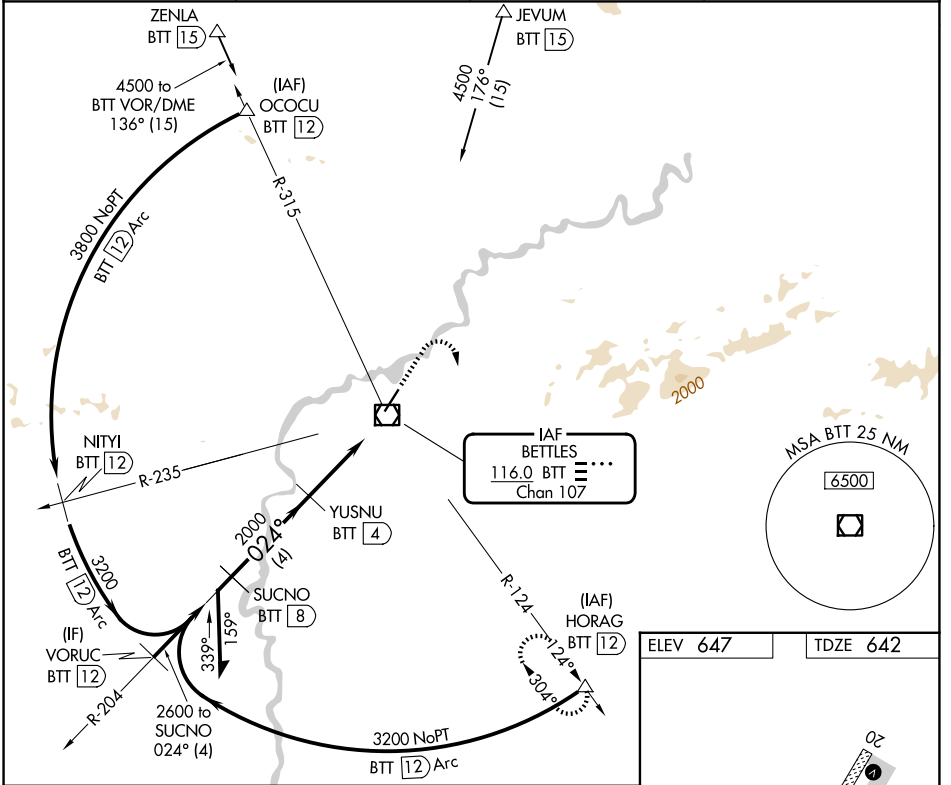
VOR/DME BTT <b>116.0</b> Chan <b>107</b>	APP CRS <b>024°</b>	Rwy Ldg TDZE <b>642</b> Apt Elev <b>647</b>
--	------------------------	---

# VOR RWY 2

BETTLES (BTT)(PABT)

DME required.	MALS	MISSED APPROACH: Climbing right turn to 3500 on BTT VOR/DME R-124 to HORAG/BTT 12 DME and hold, continue climb-in-hold to 3500.
<p>▼ Rwy 2 helicopter visibility reduction below 3/4 SM NA. Circling NA east of Rwy 2-20. Inoperative table does not apply to Cats A/B. For inop ALS, increase S-2 Cat C/D visibility to 1 3/8 SM.</p> <p>⚠ -44°C</p>		

ASOS <b>135.45</b>	ANCHORAGE CENTER <b>124.6 352.0</b>	FAIRBANKS RADIO <b>122.2</b>	CTAF <b>122.9</b>
-----------------------	--	---------------------------------	----------------------



CATEGORY	A	B	C	D
S-2	1100-1 458 (500-1)			
CIRCLING	1100-1	453 (500-1)	1320-2 673 (700-2)	1320-2 1/4 673 (700-2 1/4)

AK, 14 MAY 2026 to 09 JUL 2026

AK, 14 MAY 2026 to 09 JUL 2026