

# DELTA SEVEN DEPARTURE

AL-1729 [USAF]

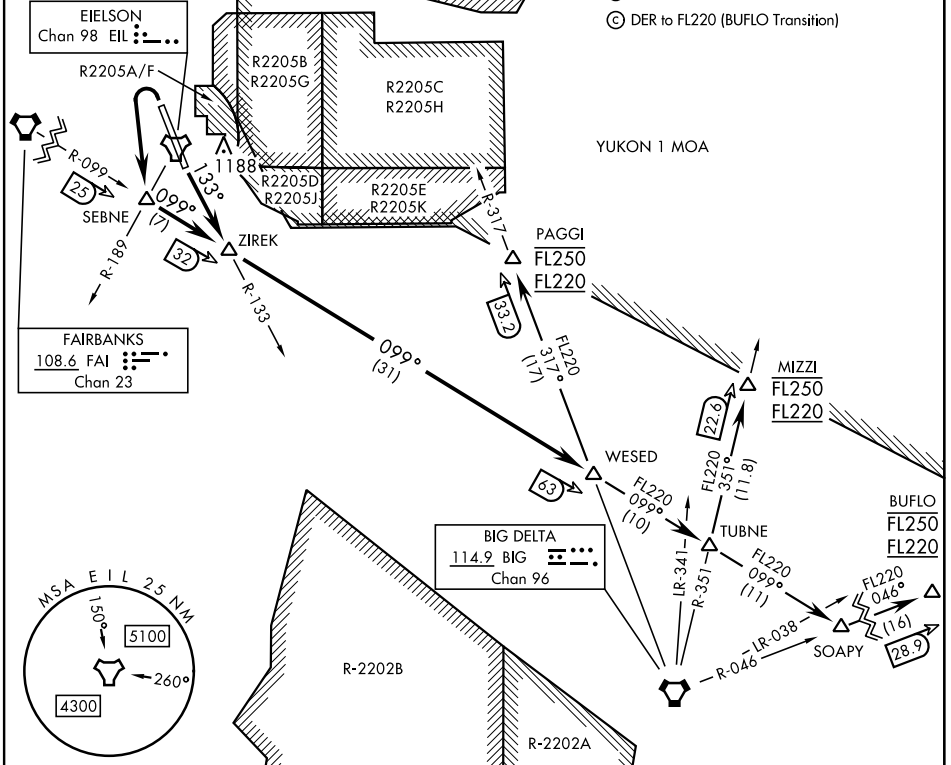
EIELSON AFB (PAEI)

FAIRBANKS, ALASKA

ATIS ★ 119.9 273.5	RADAR required	YUKON 2 MOA	Rwy	Knots	60	120	180	240	300	360
CLINC DEL 343.7			4/32Ⓐ	V/V(fpm)	444	888	1332	1776	2220	2664
GND CON 121.8 275.8			4/32Ⓑ	V/V(fpm)	410	820	1230	1640	2050	2460
TOWER ★ 127.2 352.05			4/32Ⓒ	V/V(fpm)	303	606	909	1212	1515	1818
FAIRBANKS DEP CON 127.1 251.1										

ATC Climb Rate

- Ⓐ DER to FL220 (PAGGI Transition) 4698 •
- Ⓑ DER to FL220 (MIZZI Transition)
- Ⓒ DER to FL220 (BUFLO Transition)



## DEPARTURE ROUTE DESCRIPTION

**TAKEOFF RWY 14 (DELTA7 • ZIREK):** Intercept EIL TACAN R-133 to join FAI VORTAC R-099 at ZIREK and track outbound. Thence...

**TAKEOFF RWY 32 (DELTA7 • ZIREK):** Turn left to intercept FAI VORTAC R-099 at SEBNE. Proceed outbound direct ZIREK. Thence...

**BUFLO GATE TRANSITION (DELTA7 • BUFLO):** ...turn left at SOAPY and track outbound on BIG VORTAC R-046 to BUFLO. Cross BUFLO at FL220 block FL250.

**MIZZI GATE TRANSITION (DELTA7 • MIZZI):** ...turn left at TUBNE and track outbound on BIG VORTAC R-351 to MIZZI. Cross MIZZI at FL220 block FL250.

**PAGGI GATE TRANSITION (DELTA7 • PAGGI):** ...turn left at WESED and track outbound on BIG VORTAC R-317 to PAGGI. Cross PAGGI at FL220 block FL250.

## DELTA SEVEN DEPARTURE

Orig 20APR23

FAIRBANKS, ALASKA  
EIELSON AFB (PAEI)

AK, 14 MAY 2026 to 09 JUL 2026

AK, 14 MAY 2026 to 09 JUL 2026