

FAIRBANKS, ALASKA

ILS Y or LOC/DME Y RWY 32


LOC I-FAF 109.9	APCH CRS 320°	Rwy ldg 14,529 TDZE 548 Arprt Elev 548
---------------------------	-------------------------	---

[USAF]

EIELSON AFB (PAEI)

ATC or RADAR required HRDNG to BOGIE.

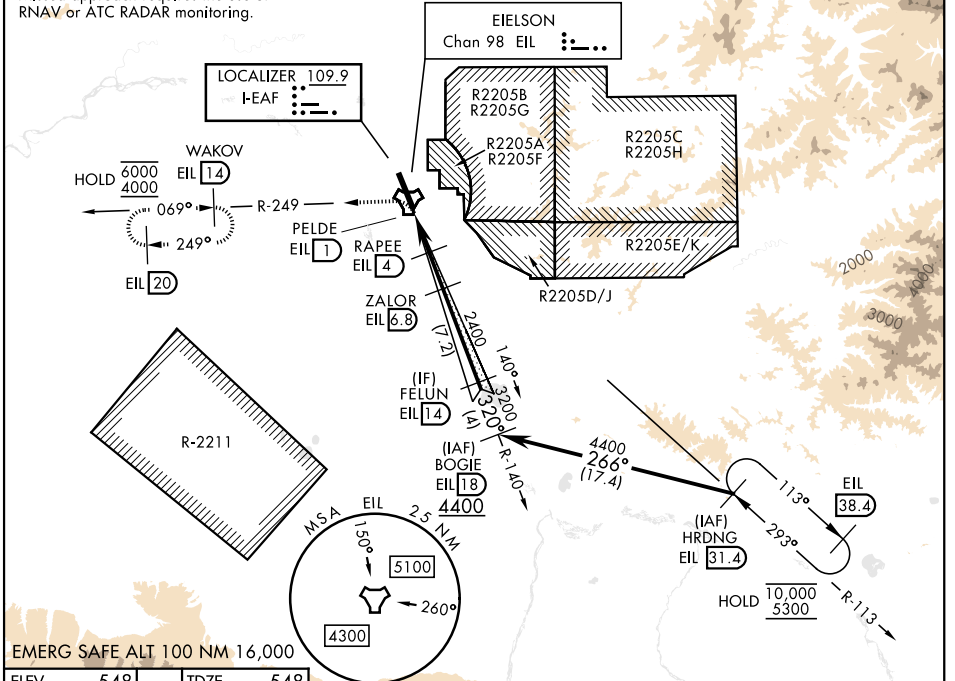
▼ * When ALS inop, increase RVR to 40 and vis to ¼ mile.
 ** When ALS inop, increase CAT AB RVR to 55, vis to 1 mile; CAT CDE RVR to 60, vis to 1½ mile.

ALSF-1


MISSED APPROACH: Climbing left turn on EIL R-249 to 4000 to WAKOV and hold. Continue climb-in-hold.

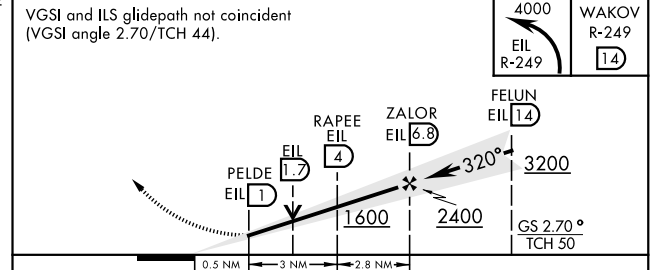
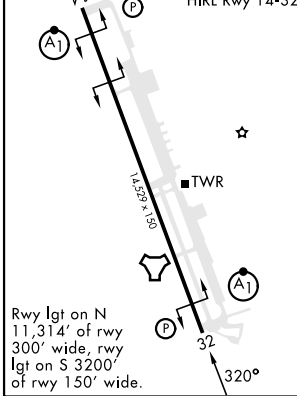
ATIS ★ 119.9 273.5	FAIRBANKS APP CON 127.1 251.1 360° - 179° 125.35 363.2 180° - 359°	TOWER ★ 127.2 352.05	GND CON 121.8 275.8	CLNC DEL 343.7
------------------------------	--	--------------------------------	-------------------------------	--------------------------

*** Circling not authorized E of Rwy 14-32.
 Missed approach requires the use of RNAV or ATC RADAR monitoring.



EMERG SAFE ALT 100 NM 16,000

ELEV 548	TDZE 548
-----------------	-----------------



CATEGORY	A	B	C	D	E
S-ILS 32*	748/24 200 (200-½)				
S-LOC 32**	960/24 412 (500-½)	960/40 412 (500-¾)			
CIRCLING ***	1000-1	1040-1	1040-1½	1280-2¼	1280-2½
	452 (500-1)	492 (500-1)	492 (500-1½)	732 (800-2¼)	732 (800-2½)

FAIRBANKS, ALASKA

64° 40' N-147° 06' W

EIELSON AFB (PAEI)

Orig 15JUN23

ILS Y or LOC/DME Y RWY 32

AK, 14 MAY 2026 to 09 JUL 2026

AK, 14 MAY 2026 to 09 JUL 2026