

FAIRBANKS, ALASKA

ILS Z or LOC/DME Z RWY 32

LOC I-EAF 109.9	APCH CRS 320°	Rwy Ldg 14,529
		TDZE 548
		Arprt Elev 548

[USAF]

EIELSON AFB (PAEI)

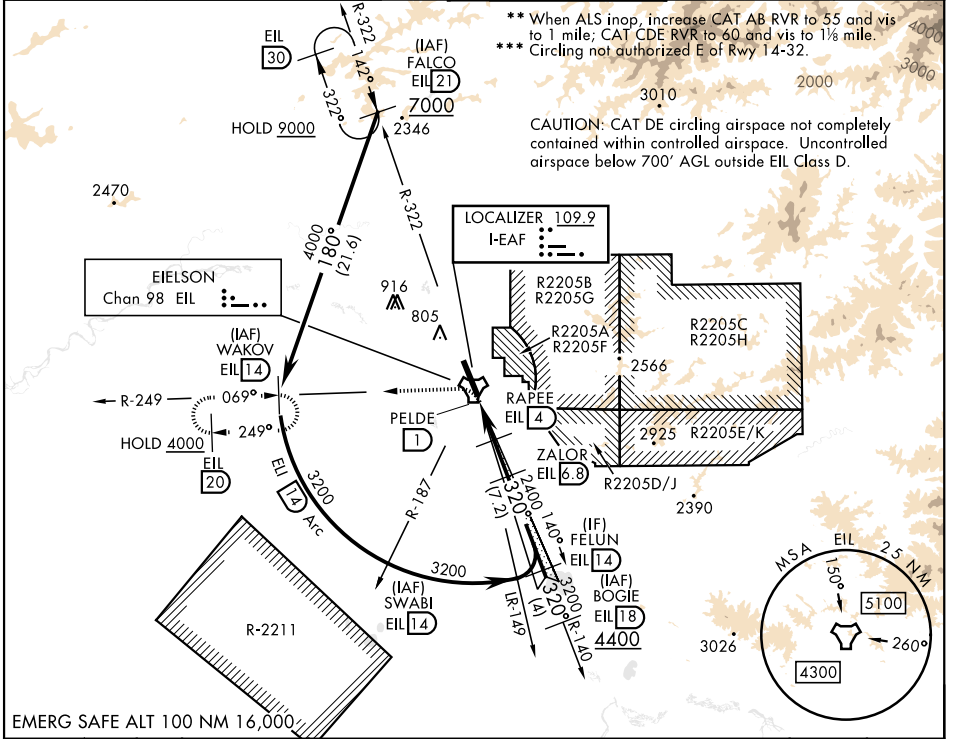
DME or RADAR required. RADAR required between FALCO-WAKOV



MISSED APPROACH: Climbing left turn on EIL R-249 to 4000 to WAKOV and hold. Continue climb in hold.

* When ALS inop, increase RVR to 40 and vis to 3/8 mile.

ATIS ★ 119.9 273.5	FAIRBANKS APP CON 127.1 251.1 360° - 179° 125.35 363.2 180° - 359°	TOWER ★ 127.2 352.05	GND CON 121.8 275.8	CLNC DEL 343.7
------------------------------	----------------------------------------------------------------------------------------	--------------------------------	-------------------------------	--------------------------



** When ALS inop, increase CAT AB RVR to 55 and vis to 1 mile; CAT CDE RVR to 60 and vis to 1 1/8 mile.
*** Circling not authorized E of Rwy 14-32.

CAUTION: CAT DE circling airspace not completely contained within controlled airspace. Uncontrolled airspace below 700' AGL outside EIL Class D.

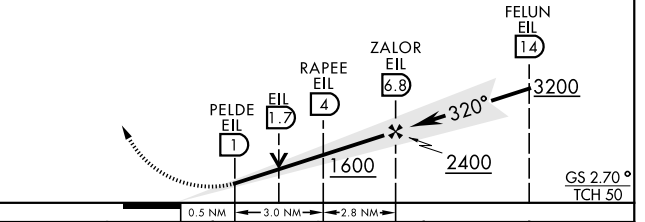
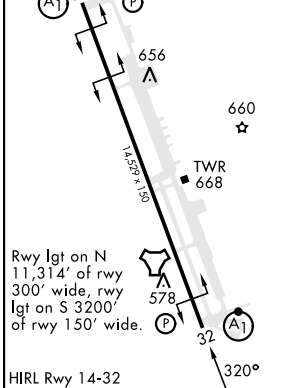
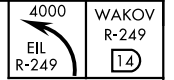
AK, 14 MAY 2026 to 09 JUL 2026

AK, 14 MAY 2026 to 09 JUL 2026

EMERG SAFE ALT 100 NM 16,000

ELEV	548	TDZE	548
------	------------	------	------------

VGSI and ILS glidepath not coincident (VGSI angle 2.70/TCH 44).



CATEGORY	A	B	C	D	E
S-ILS 32*	748/24 200 (200-1/2)				
S-LOC 32**	960/24 412 (500-1/2)	960/40		412	(500-3/4)
CIRCLING ***	1000-1	1040-1	1040-1 1/2	1280-2 1/4	1280-2 1/2
	452 (500-1)	492 (500-1)	492 (500-1 1/2)	732 (800-2 1/4)	732 (800-2 1/2)

FAIRBANKS, ALASKA

64° 40' N - 147° 06' W

EIELSON AFB (PAEI)

Orig 15JUN23

ILS Z or LOC/DME Z RWY 32