

FAIRBANKS, ALASKA

RNAV (GPS) RWY 32

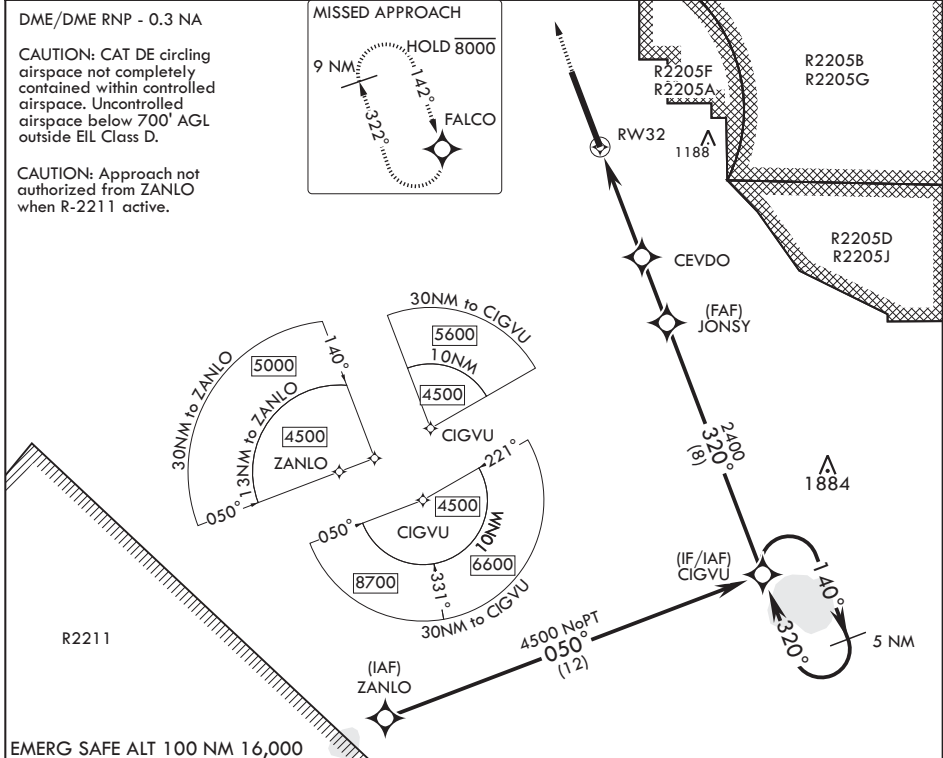
APCH CRS 320°	Rwy Idg TDZE Arprt Elev	14,529 548 548
-------------------------	-------------------------------	---

(USAF)

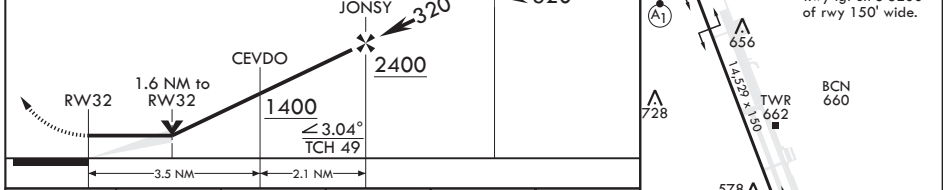
EIELSON AFB (PAEI)

RADAR required	ALSF-1	MISSED APPROACH: Climb to 1100, then climbing right turn to 6000 direct FALCO and hold, continue climb-in-hold to 6000.
<p>▼ * When ALS inop increase CAT AB RVR to 55, vis to 1 mile; CAT CDE vis to 1 3/8 miles. ** Circling not authorized E Rwy 14-32.</p>		

ATIS* 119.9 273.5	FAIRBANKS APP CON 125.35 363.2 180°-359° 127.1 251.1 360°-179°	TOWER* 127.2 352.05	GND CON 121.8 275.8	CLNC DEL 343.7
-----------------------------	--	-------------------------------	-------------------------------	--------------------------



1100	6000	FALCO	VGSI and descent angles not coincident (VGSI angle 2.70/TCH 44).	CIGVU	ELEV 548	TDZE 548
------	------	-------	--	-------	----------	----------



CATEGORY	A	B	C	D	E
RNAV MDA*	1040/24 492 (500-½)		1040/50 492 (500-1)		
CIRCLING**	1040-1 492 (500-1)		1040-1½ 492 (500-1½)	1280-2¼ 732 (800-2¼)	1280-2½ 732 (800-2½)

FAIRBANKS, ALASKA
Amdt 5 17JUN21

64°40'N - 147°06'W

EIELSON AFB (PAEI)

RNAV (GPS) RWY 32

AK, 14 MAY 2026 to 09 JUL 2026

AK, 14 MAY 2026 to 09 JUL 2026