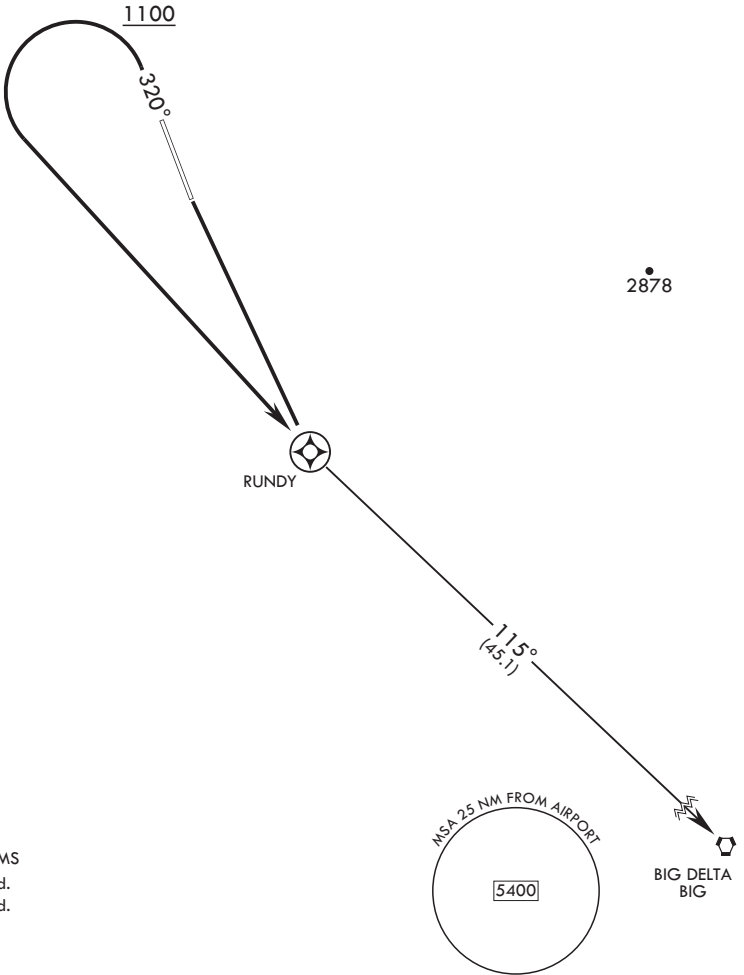


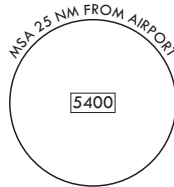
RUNDY ONE DEPARTURE (RNAV) (RUNDY1.BIG)

FAIRBANKS DEP CON
127.1 251.1

RNAV1 - GPS



TAKEOFF MINIMUMS
 RWY 14, Standard.
 RWY 32, Standard.



DEPARTURE ROUTE DESCRIPTION

TAKEOFF RWY 14: Climb to RUNDY, thence...

TAKEOFF RWY 32: Climb on heading 320° to 1100, then climbing left turn direct RUNDY, thence...

BIG DELTA TRANSITION (RUNDY1.BIG): Track 115° to BIG.

RUNDY ONE DEPARTURE (RNAV) (RUNDY1.BIG)