

TACAN RWY 14

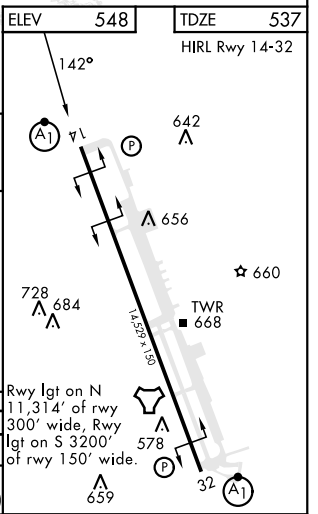
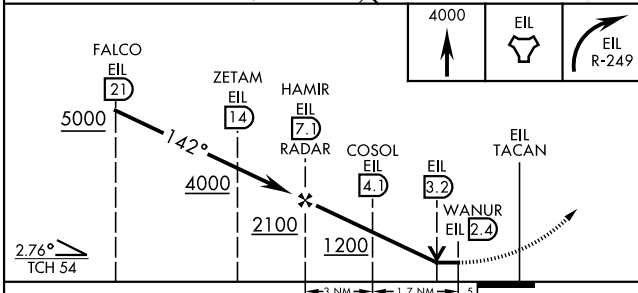
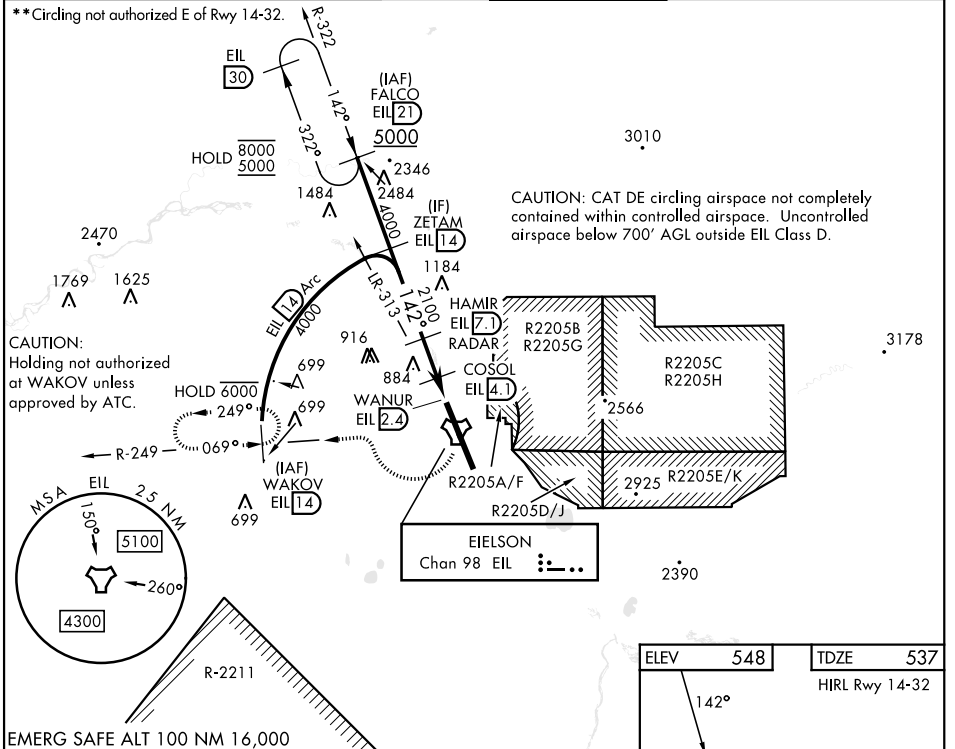
TACAN EIL Chan 98	APCH CRS 142°	Rwy ldg 14,529 TDZE 537 Arprt Elev 548
--------------------------	----------------------	---

[USAF]

EIELSON AFB (PAEI)

RADAR or DME required. RNAV or RADAR monitoring required for missed approach.	ALSF-1	MISSED APPROACH: Climb to 4000 direct EIL TACAN, continue climbing right turn to intercept EIL TACAN R-249 to WAKOV and hold. Continue climb-in hold to 4000.
▼ * When ALS inop, increase CAT AB RVR to 55 and vis to 1 mile, CAT CDE vis to 1¼ miles.		

ATIS ★ 119.9 273.5	ASOS 118.525	FAIRBANKS APP CON 127.1 251.1 (360° - 179°) 125.35 363.2 (180° - 359°)	TOWER ★ 127.2 352.05	GND CON 121.8 275.8	CLNC DEL 343.7
------------------------------	------------------------	--	--------------------------------	-------------------------------	--------------------------



CATEGORY	A	B	C	D	E
S-14*	960/24 423 (500-½)		960/40 423 (500-¾)		
CIRCLING**	1000-1 452 (500-1)	1040-1 492 (500-1)	1040-1½ 492 (500-1½)	1280-2¼ 732 (800-2¼)	1280-2½ 732 (800-2½)

TACAN RWY 14

AK, 14 MAY 2026 TO 09 JUL 2026

AK, 14 MAY 2026 TO 09 JUL 2026