

# TACAN Y RWY 32

TACAN EIL Chan <b>98</b>	APCH CRS <b>320°</b>	Rwy ldg <b>14,529</b> TDZE <b>548</b> Arprt Elev <b>548</b>
--------------------------	----------------------	---

[USAF]

EIELSON AFB (PAEI)

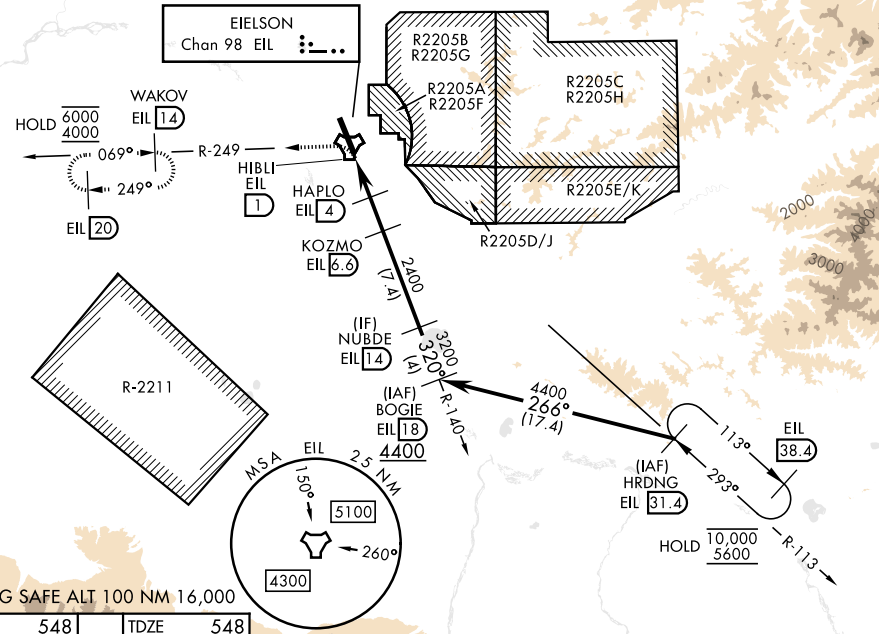
ATC or RADAR required HRDNG to BOGIE. RNAV or RADAR monitoring required for missed approach.

ALSF-1 	MISSED APPROACH: Climbing left turn on EIL R-249 to 4000 to WAKOV and hold. Continue climb-in-hold.
------------	---

▼ \* When ALS inop, increase CAT AB RVR to 55, vis to 1 mile; CAT CDE vis to 1½ miles.  
\*\* Circling not authorized E of Rwy 14-32.

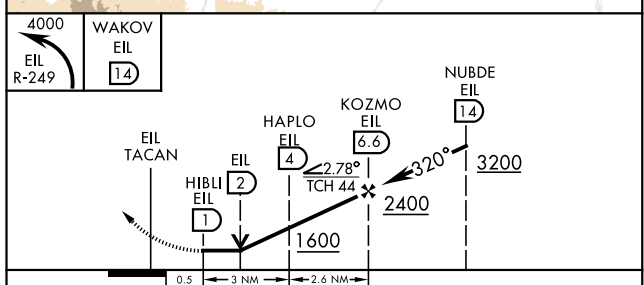
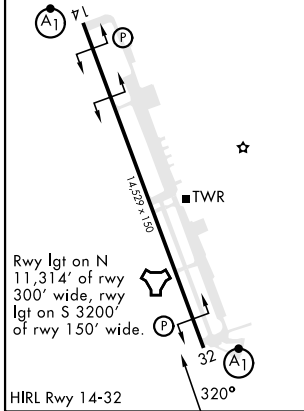
ATIS ★ <b>119.9 273.5</b>	FAIRBANKS APP CON <b>127.1 251.1 360° - 179°</b> <b>125.35 363.2 180° - 359°</b>	TOWER ★ <b>127.2 352.05</b>	GND CON <b>121.8 275.8</b>	CLNC DEL <b>343.7</b>
------------------------------	--	--------------------------------	-------------------------------	--------------------------

CAUTION: Uncontrolled airspace below 700' AGL outside EIL CLASS D.



EMERG SAFE ALT 100 NM 16,000

ELEV <b>548</b>	TDZE <b>548</b>
-----------------	-----------------



CATEGORY	A	B	C	D	E
S-32*	1040/24 492 (500-½)		1040/50 492 (500-1)		
CIRCLING**	1040-1 492 (500-1)		1040-1½ 492 (500-1½)	1280-2¼ 732 (800-2¼)	1280-2½ 732 (800-2½)

# TACAN Y RWY 32

AK, 14 MAY 2026 to 09 JUL 2026

AK, 14 MAY 2026 to 09 JUL 2026