

COPTER TACAN 004°

TACAN NSE Chan 70	APCH CRS 004°	Rwy Idg TDZE Arprt Elev 5996 N/A 177
-----------------------------	-------------------------	--

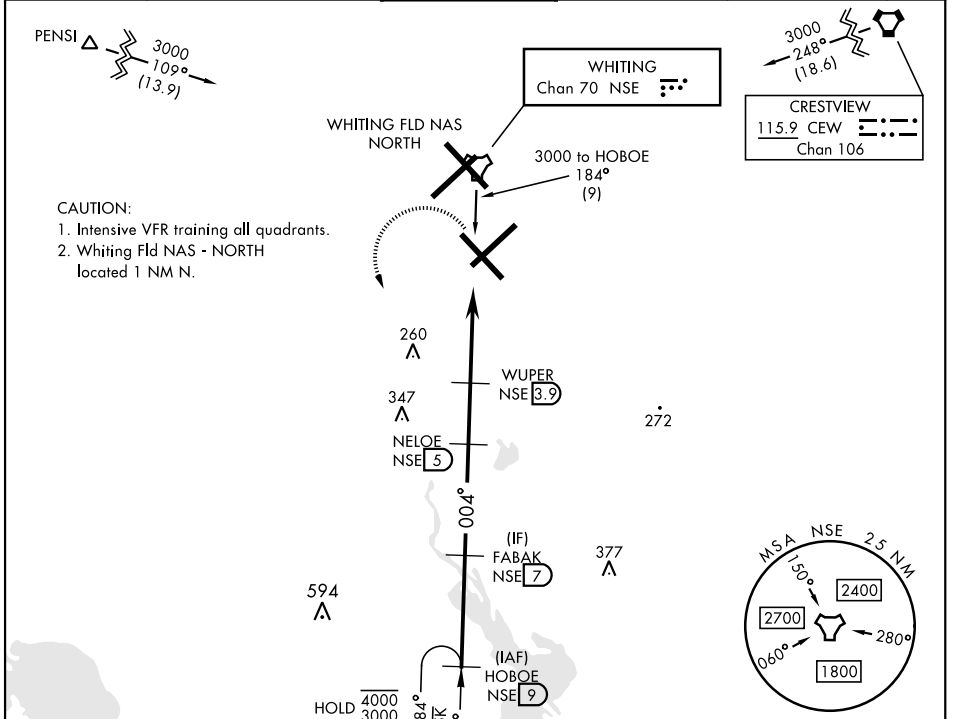
[USN]

WHITING FLD NAS - SOUTH (KNDZ)

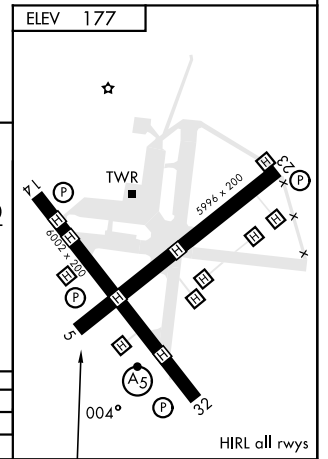
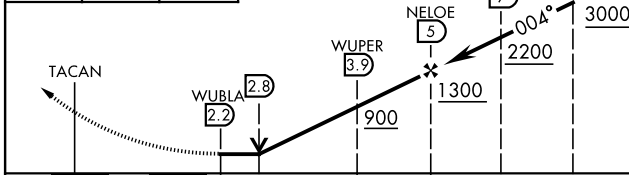
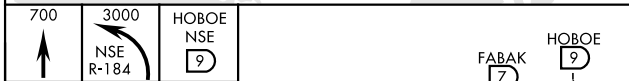
▼ Maximum airspeed 90 KIAS.
Visibility reduction by helicopters NA.

MISSED APPROACH: Climb to 700. Then climbing left turn to 3000. Intercept NSE TACAN R-184 to HOBEOE and hold. Contact Pensacola Approach Control.

ATIS ★ 273.575	PENSACOLA APP CON 124.85 235.775	SOUTH WHITING TOWER ★ 123.075 348.675	GND CON 317.65	CLNC DEL 355.6	ASR/ PAR
--------------------------	--	---	--------------------------	--------------------------	-------------



EMERG SAFE ALT 100 NM 3500



CATEGORY	COPTER	
H-004	560-1	390 (400-1)
CIRCLING	NOT AUTHORIZED	

COPTER TACAN 004°

SE-3, 14 MAY 2026 to 11 JUN 2026

SE-3, 14 MAY 2026 to 11 JUN 2026