

# TACAN RWY 32

TACAN NGS Chan <b>63</b>	APCH CRS <b>322°</b>	Rwy ldg TDZE Arprt Elev	<b>6002</b> <b>172</b> <b>177</b>
-----------------------------	-------------------------	-------------------------------	---

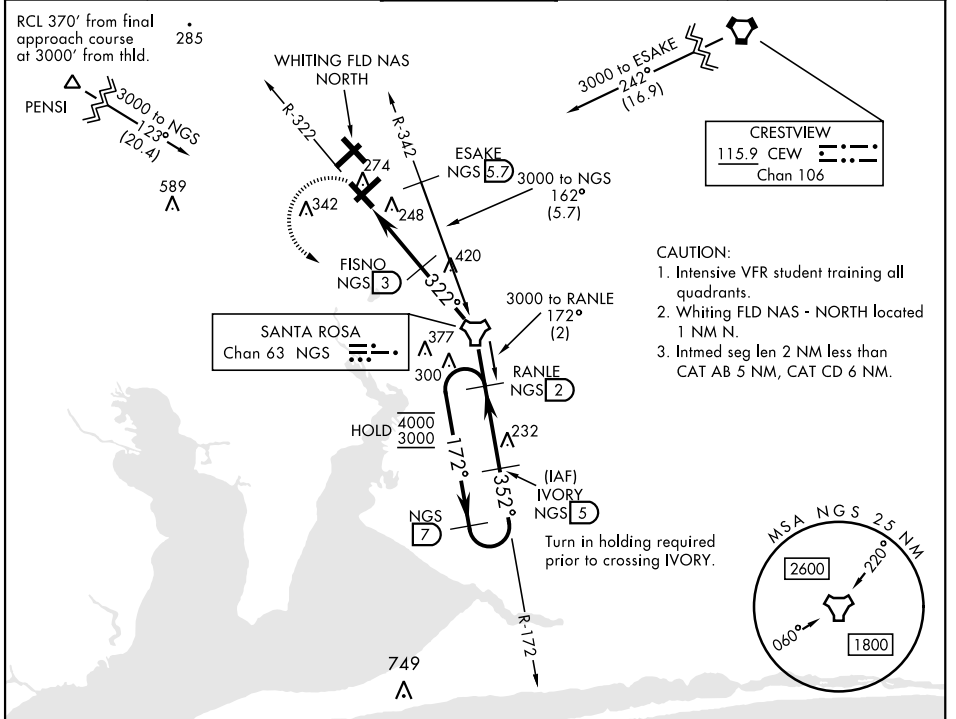
[USN]

WHITING FLD NAS - SOUTH (KNDZ)

▼ \* When ALS inop, increase vis to 1 mile.  
\*\* Circling not authorized N of Rwy 14 and 23.

MALSR MISSED APPROACH: Climb to 600, then climbing left turn to 3000 direct NGS TACAN. Then via R-172 to RANLE and hold. Continue climb in hold. Contact Pensacola APP CON.

ATIS ★ <b>273.575</b>	PENSACOLA APP CON <b>124.85 235.775</b>	SOUTH WHITING TOWER ★ <b>123.075 348.675</b>	GND CON <b>317.65</b>	CLNC DEL <b>355.6</b>	ASR/ PAR
--------------------------	--	---	--------------------------	--------------------------	-------------

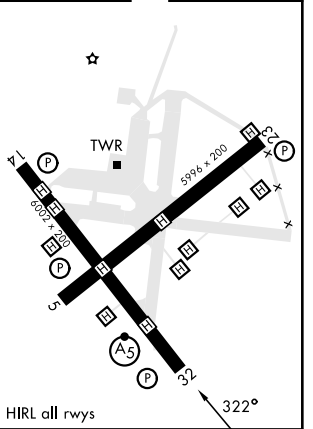
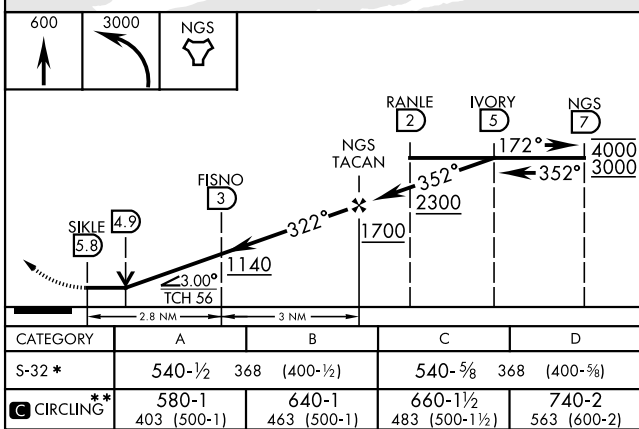


SE-3, 14 MAY 2026 to 11 JUN 2026

SE-3, 14 MAY 2026 to 11 JUN 2026

EMERG SAFE ALT 100 NM 3500

ELEV 177	TDZE 172
----------	----------



MILTON, FLORIDA 30° 42' N - 87° 01' W WHITING FLD NAS - SOUTH (KNDZ)

# TACAN RWY 32