

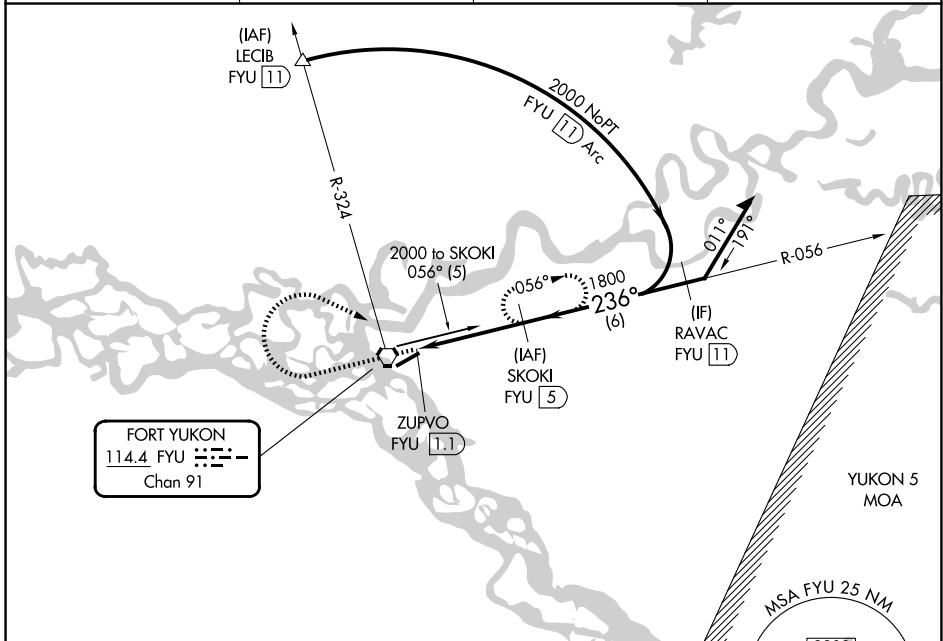
VORTAC FYU 114.4 Chan 91	APP CRS 236°	Rwy Ldg 5000 TDZE 447 Apt Elev 447
--	------------------------	---

VOR/DME or TACAN RWY 22

FORT YUKON (FYU) (PFYU)

Inop table does not apply. Circling NA southeast of Rwy 4-22. Rwy 22 Straight-In and Circling minimums NA at night. Helicopter visibility reduction below 1 SM NA.	MALSF 	MISSED APPROACH: Climb to 2000 then right turn on heading 100° and FYU VORTAC R-056 to SKOKI/5 DME and hold.
--	-----------	---

AWOS-3P 125.8	ANCHORAGE CENTER 135.0 225.4	FAIRBANKS RADIO 122.05	CTAF 122.5
-------------------------	--	----------------------------------	----------------------

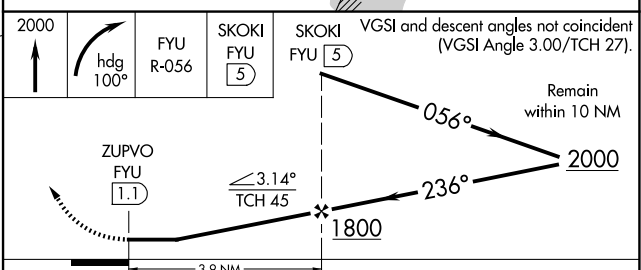
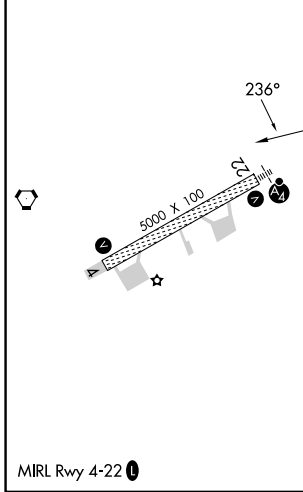


FORT YUKON
114.4 FYU
Chan 91

AK, 14 MAY 2026 to 09 JUL 2026

AK, 14 MAY 2026 to 09 JUL 2026

ELEV 447	TDZE 447
-----------------	-----------------



CATEGORY	A	B	C	D
S-22	960-1	513 (600-1)	960-1 $\frac{3}{8}$	513 (600-1 $\frac{3}{8}$)
CIRCLING	960-1	513 (600-1)	960-1 $\frac{1}{2}$ 513 (600-1 $\frac{1}{2}$)	1000-2 553 (600-2)