

VOR/DME MDO	APP CRS	Rwy Ldg	<b>3158</b>
<b>115.3</b>	<b>022°</b>	TDZE	<b>100</b>
Chan <b>100</b>		Apt Elev	<b>100</b>

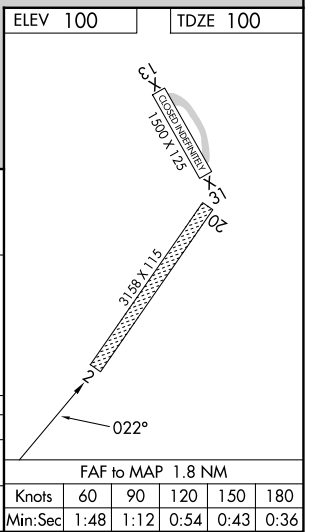
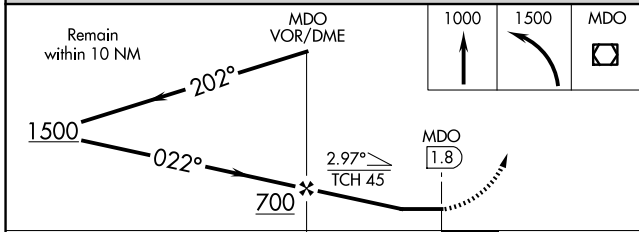
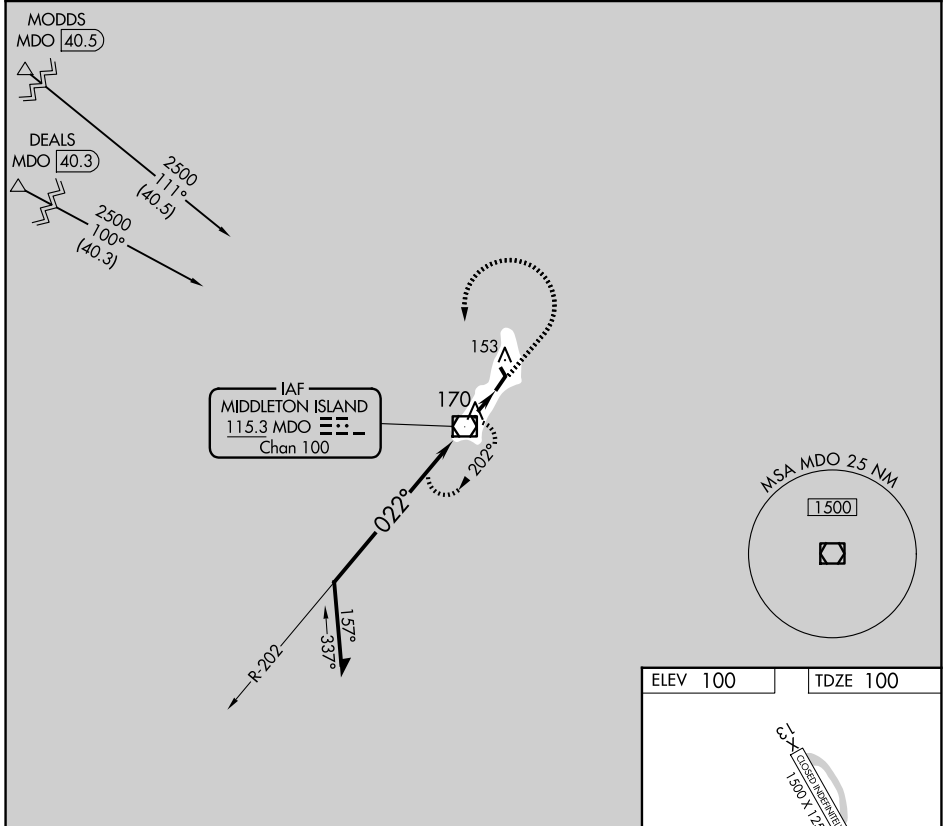
# VOR RWY 2

MIDDLETON ISLAND (MDO) (PAMD)

▼ When local altimeter setting not received, procedure NA.  
 Procedure NA at night.  
 Helicopter visibility reduction below 1 SM NA.

MISSED APPROACH: Climb to 1000 then climbing left turn to 1500 direct MDO VOR/DME and hold.

AWOS-3P <b>135.725</b>	ANCHORAGE CENTER <b>133.6 269.4</b>	JUNEAU RADIO <b>122.05</b>	CTAF <b>122.9</b>
---------------------------	--	-------------------------------	----------------------



CATEGORY	A	B	C	D
S-2	560-1	460 (500-1)	560-1 <sup>3</sup> / <sub>8</sub> 460 (500-1 <sup>3</sup> / <sub>8</sub> )	NA
CIRCLING	600-1	500 (500-1)	600-1 <sup>1</sup> / <sub>2</sub> 500 (500-1 <sup>1</sup> / <sub>2</sub> )	NA

AK, 14 MAY 2026 to 09 JUL 2026

AK, 14 MAY 2026 to 09 JUL 2026