

APP CRS	Rwy Ldg	5900
271°	TDZE	15
	Apt Elev	15

RNAV (GPS) RWY 27

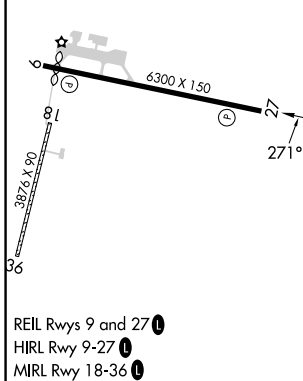
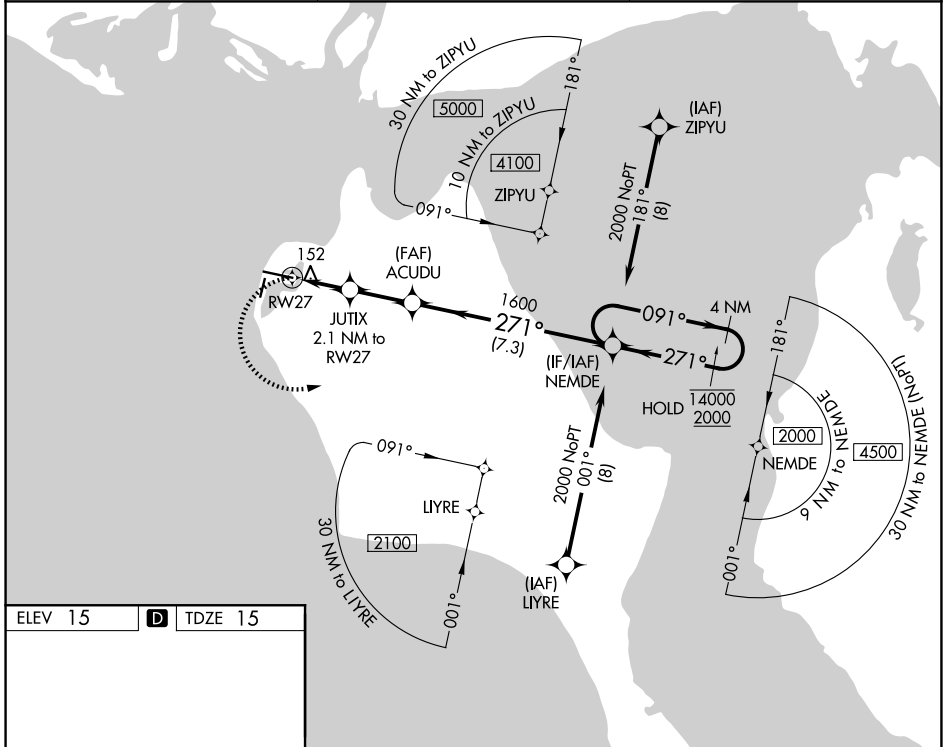
RALPH WIEN MEML (OTZ) (PAOT)

RNP APCH.

⚠ Circling Rwy 18, 36 NA at night. Rwy 27 helicopter visibility reduction below 1 SM NA. Straight-in Rwy 27 NA at night, Circling Rwy 27 at night, operational VGSI required, remain on or above VGSI glidepath until threshold.

MISSED APPROACH: Climbing left turn to 2000 direct NEMDE and hold.

AFIS 135.45	ANCHORAGE CENTER 119.2 263.0	KOTZEBUE RADIO 123.6 (CTAF) 0
-----------------------	--	---



2000	NEMDE	NEMDE		4 NM Holding Pattern
JUTIX 2.1 NM to RWY 27	ACUDU	NEMDE		4 NM Holding Pattern
RWY 27	3.30° TCH 47	271°	091°	1400 2000
2.1 NM		2.3 NM		7.3 NM
CATEGORY	A	B	C	D
LNAV MDA	420-1	405 (500-1)	420-1½	405 (500-1½)
CIRCLING	520-1	505 (600-1)	720-2 705 (800-2)	720-2¼ 705 (800-2¼)

KOTZEBUE, ALASKA
Orig-C 03JAN19

66°53'N-162°36'W

RNAV (GPS) RWY 27

AK, 14 MAY 2026 to 09 JUL 2026

AK, 14 MAY 2026 to 09 JUL 2026