

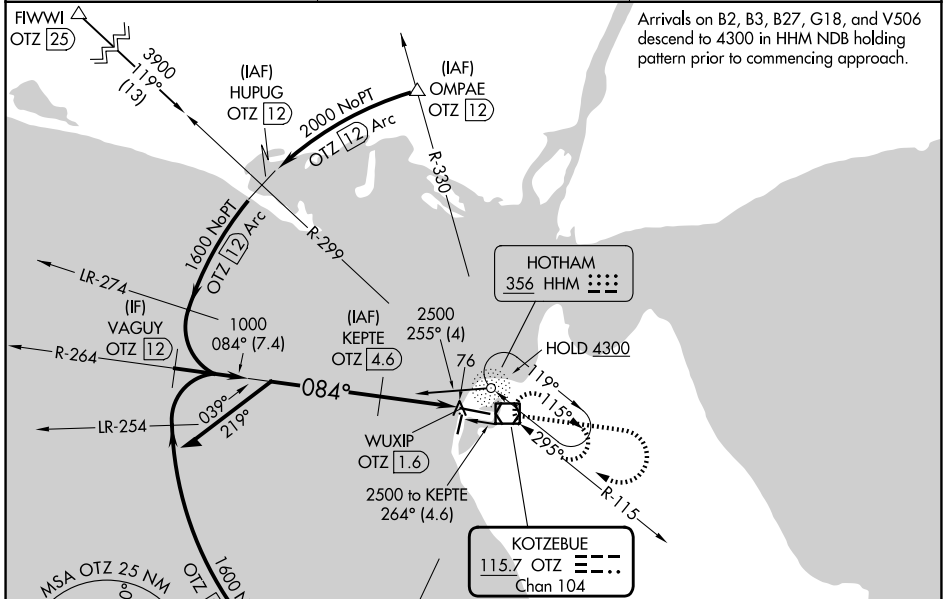
VOR/DME OTZ	APP CRS	Rwy Ldg	<b>5900</b>
<b>115.7</b>	<b>084°</b>	TDZE	<b>13</b>
Chan <b>104</b>		Apt Elev	<b>15</b>

# VOR RWY 9

RALPH WIEN MEML (OTZ) (PAOT)

DME required.	MISSED APPROACH: Climb to 1500 then climbing right turn to 2000 direct OTZ VOR/DME and hold, continue climb-in-hold to 2000.
<p><b>▼</b> Circling Rwy 18, 36 NA at night, Circling Rwy 27 at night, operational VGSI required, remain on or above VGSI glidepath until threshold. Rwy 9 helicopter visibility reduction below RVR 4000 NA.</p>	

AFIS <b>135.45</b>	ANCHORAGE CENTER <b>119.2 263.0</b>	KOTZEBUE RADIO <b>123.6 (CTAF) 0</b>
-----------------------	--	---

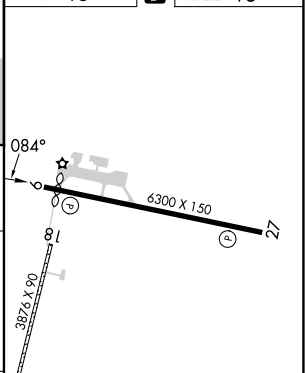
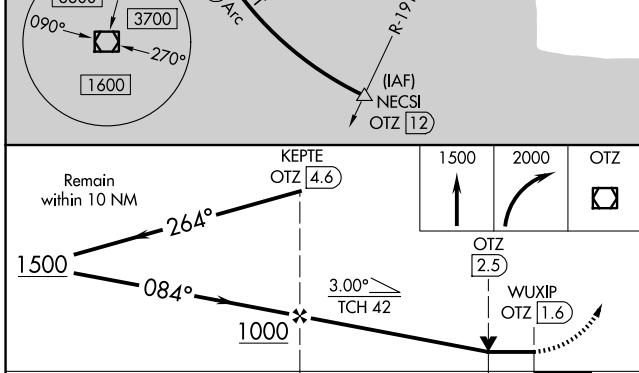


Arrivals on B2, B3, B27, G18, and V506 descend to 4300 in HHM NDB holding pattern prior to commencing approach.

AK, 14 MAY 2026 to 09 JUL 2026

AK, 14 MAY 2026 to 09 JUL 2026

ELEV 15	<b>D</b> TDZE 13
---------	------------------



CATEGORY	A	B	C	D
S-9	340/55 327 (400-1)		340/50 327 (400-1)	
CIRCLING	520-1 505 (600-1)		720-2 705 (800-2)	720-2 1/4 705 (800-2 1/4)

- REIL Rwy 9 and 27 **0**
- HIRL Rwy 9-27 **0**
- MIRL Rwy 18-36 **0**

# VOR RWY 9