


LOC I-PAU <b>109.9</b>	APP CRS <b>180°</b>	Rwy Ldg 6500
		TDZE 66
		Apt Elev 66

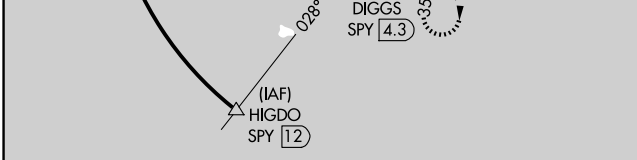
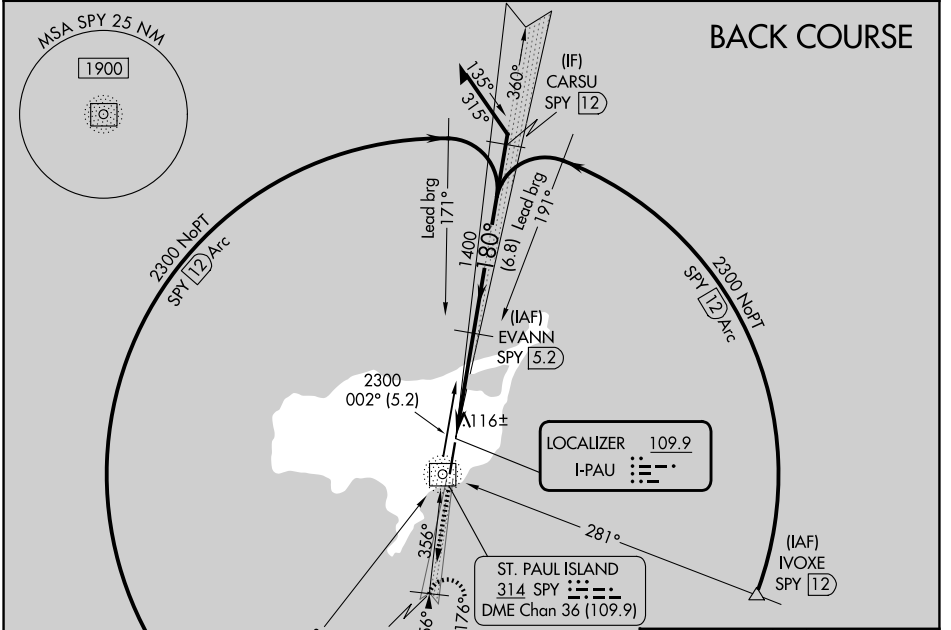
# LOC/DME BC RWY 18

ST PAUL ISLAND (SNP) (PASN)

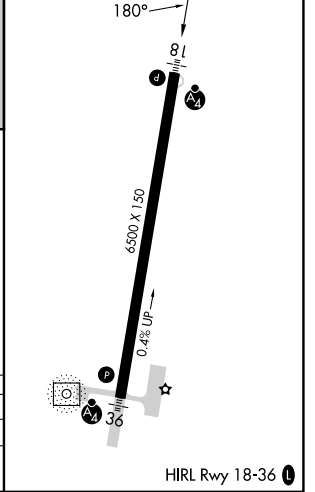
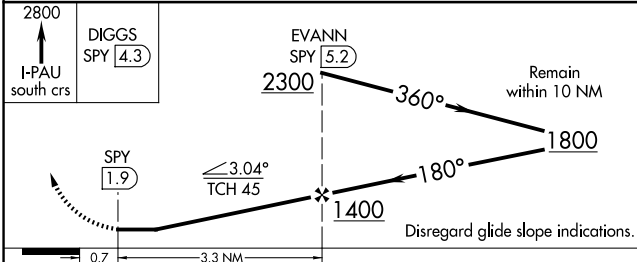
**▼** Inoperative table does not apply. Circling NA west of Rwy 18-36. Rwy 18 helicopter visibility reduction below 1 SM NA. DME from SPY NDB/DME. Simultaneous reception of I-PAU and SPY DME required.

**MALSF**  
  
**MISSED APPROACH:** Climb to 2800 via I-PAU south course to DIGGS/SPY 4.3 DME and hold, continue climb-in-hold to 2800.

ASOS <b>135.75</b>	ANCHORAGE CENTER <b>119.1 339.8</b>	CTAF <b>122.3</b> 
-----------------------	--	--



ELEV 66	TDZE 66
---------	---------



CATEGORY	A	B	C	D
S-18	580-1 514 (600-1)		580-1½ 514 (600-1½)	
CIRCLING	800-1 734 (800-1)		800-2 734 (800-2)	800-2¼ 734 (800-2¼)

AK, 14 MAY 2026 to 09 JUL 2026

AK, 14 MAY 2026 to 09 JUL 2026